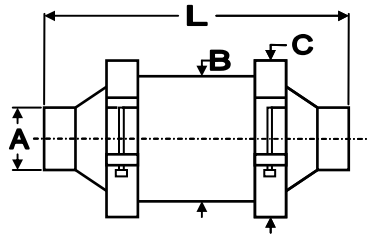
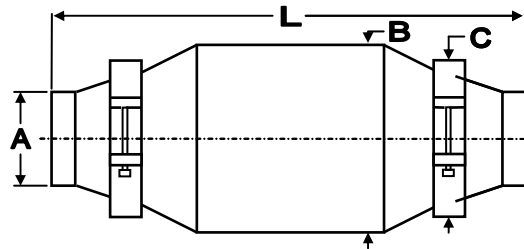


Nett® SX-Series SiC Diesel Particulate Filters

Technical Data Sheet



Diesel Filter (SX502-SX709)



Diesel Filter (SX910-SX1326)

Dimension & Application Data							
Filter P/N	B - Filter Core Diameter in (mm)	C - Clamp Diameter in (mm)	L - Overall Length in (mm)	A - Pipe Diam.	Max. Engine Displacement L (in ³)	Max. Exhaust Flow cfm (m ³ /h)	Max Engine Power hp (kW)
SX502	6.2 (157)	7.2 (185)	14.8 (376)	as per customer specifications	1.8 (110)	189 (320)	33 (25)
SX503	6.2 (157)	7.2 (185)	16.8 (427)		2.4 (147)	252 (427)	43 (33)
SX504	6.2 (157)	7.2 (185)	18.5 (470)		3.0 (184)	314 (533)	54 (41)
SX705	8.1 (206)	8.7 (220)	18.5 (470)		4.1 (251)	441 (749)	75 (56)
SX707	8.1 (206)	8.7 (220)	20.5 (521)		5.1 (312)	551 (936)	94 (71)
SX709	8.1 (206)	8.7 (220)	22.5 (572)		6.2 (379)	661 (1123)	113 (85)
SX910	9.6 (244)	8.7 (220)	23.5 (597)		5.5 (336)	793 (1347)	135 (101)
SX913	9.6 (244)	8.7 (220)	25.5 (648)		6.6 (403)	952 (1617)	162 (121)
SX1011	11.1 (282)	8.7 (220)	22.7 (577)		6.0 (367)	864 (1467)	147 (110)
SX1014	11.1 (282)	8.7 (220)	24.7 (627)		7.5 (458)	1080 (1834)	184 (138)
SX1017	11.1 (282)	8.7 (220)	26.7 (678)		9.0 (550)	1295 (2200)	221 (165)
SX1116	11.9 (302)	8.7 (220)	26.6 (676)		8.6 (525)	1240 (2106)	211 (158)
SX1120	11.9 (302)	8.7 (220)	28.6 (726)		10.3 (629)	1488 (2527)	254 (190)
SX1326	13.7 (348)	8.7 (220)	29.5 (749)		13.8 (843)	1986 (3373)	338 (253)

Above maximum displacements, exhaust flow and horsepower ratings are estimates for reference only and are applicable for engines with exhaust PM levels of 0.05g/bhp-hr. Please contact Nett's sales department for accurate sizing prior to ordering.

Nett Technologies is committed to continuous product development and reserves the right to change specifications without notice.