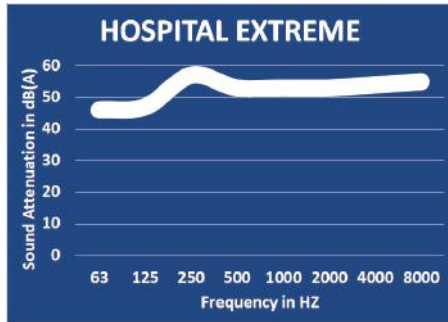


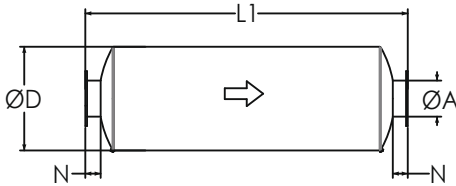
Hospital Extreme Grade Silencers

Model NTHE-C (Cylindrical), 50-60 dBA

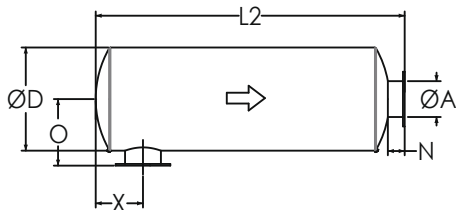
TYPICAL ATTENUATION CURVE



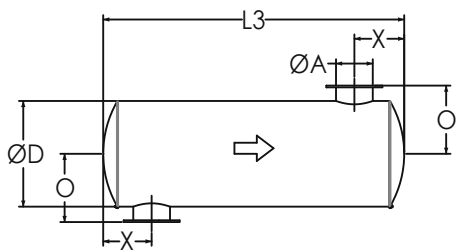
TYPICAL CONFIGURATIONS



END IN END OUT (EI-EO)



SIDE IN END OUT (SI-EO)



SIDE IN SIDE OUT (SI-SO)

Nett Technologies' Hospital Extreme Grade Silencers are designed to achieve maximum performance with the least amount of backpressure. The silencers are reactive and absorptive silencers which are typically used for reciprocating or positive displacement engines where noise level regulations are extreme.

FEATURES & BENEFITS

- Over 25 years of excellence in manufacturing noise and emission control solutions
- Compact modular designs providing ease of installations, less weight and less foot-print
- Responsive lead time for both standard and custom designs to meet your needs
- Customized engineered systems solutions to meet challenging integration and engine requirements

Contact Nett Technologies with your projects design requirements and specifications for optimized noise control solutions.

OPTIONS

- Versatile connections including ANSI pattern flanges, NPT, slip-on, engine flange, schedule 40 and others
- Aluminized Steel, Stainless Steel 304 or 316 construction
- Horizontal or vertical mounting brackets and lifting lugs

ACCESSORIES

- Hardware Kits
- Flexible connectors and expansion joints
- Elbows
- Thimbles
- Raincaps
- Thermal insulation: integrated or with thermal insulation blankets

Please see our accessories catalog for a complete listing.

PRODUCT DIMENSIONS (in)

Model*	A	D	L1	L2	L3	X	X	N	O
	Outlet	Dia	EI-EO	SI-EO	SI-SO	Min	Max	Nipple	O
NTHE-C1	1	10	48	46	44	5	9	2	7
NTHE-C1.5	1.5	12	60	58	56	5	9	2	8
NTHE-C2	2	12	64	61	58	5	10	3	9
NTHE-C2.5	2.5	12	68	65	62	6	12	3	9
NTHE-C3	3	14	70	67	64	7	13	3	10
NTHE-C3.5	3.5	16	78	75	72	8	15	3	11
NTHE-C4	4	20	82	79	76	8	17	3	13
NTHE-C5	5	20	88	85	82	9	20	3	13
NTHE-C6	6	24	100	96	92	10	23	4	16
NTHE-C8	8	36	132	128	124	13	28	4	22
NTHE-C10	10	36	140	136	132	14	32	4	22
NTHE-C12	12	40	158	154	150	15	35	4	24
NTHE-C14	14	42	174	169	164	18	37	5	26
NTHE-C16	16	48	194	189	184	18	49	5	29
NTHE-C18	18	50	205	200	195	21	52	5	30
NTHE-C20	20	54	226	221	216	24	54	5	32
NTHE-C22	22	54	228	223	218	26	57	5	32
NTHE-C24	24	60	233	228	223	27	63	5	35

* Other models and custom designs are available upon request. Dimensions subject to change without notice. All silencers are equipped with drain ports on inlet side. The silencer is all welded construction and coated with high heat black paint for maximum durability.

** Standard inlet/outlet position.