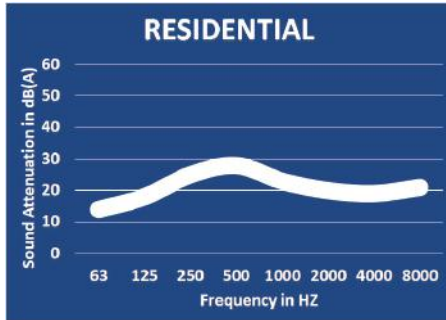


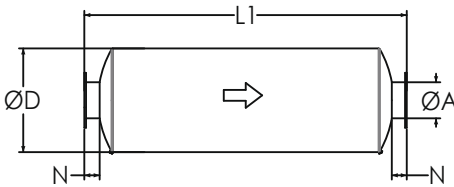
Residential Grade Silencers

Model NTRS-C (Cylindrical), 20-25 dBA

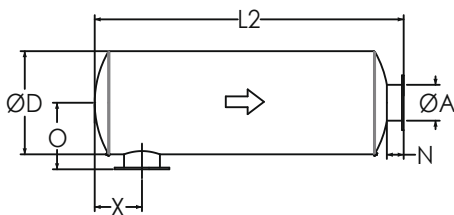
TYPICAL ATTENUATION CURVE



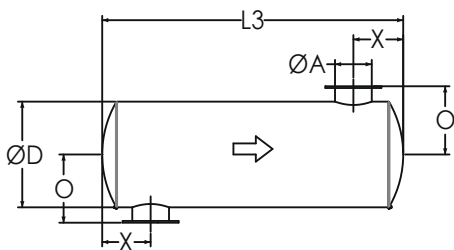
TYPICAL CONFIGURATIONS



END IN END OUT (EI-EO)



SIDE IN END OUT (SI-EO)



SIDE IN SIDE OUT (SI-SO)

Nett Technologies' Residential Grade Silencers are designed to achieve maximum performance with the least amount of backpressure. The silencers are Reactive Silencers and are typically used for reciprocating or positive displacement engines where noise level regulations are medium-low.

FEATURES & BENEFITS

- Over 25 years of excellence in manufacturing noise and emission control solutions
- Compact modular designs providing ease of installations, less weight and less foot-print
- Responsive lead time for both standard and custom designs to meet your needs
- Customized engineered systems solutions to meet challenging integration and engine requirements

Contact Nett Technologies with your projects design requirements and specifications for optimized noise control solutions.

PRODUCT DIMENSIONS (in)

Model*	A	D	L1	L2	L3	X**	X	N	O
	Outlet	Dia	EI-EO	SI-EO	SI-SO	Min	Max	Nipple	O
NTRS-C1	1	4	20	18	16	3	10	2	4
NTRS-C1.5	1.5	6	28	26	24	3	12	2	5
NTRS-C2	2	6	28	25	22	4	12	3	6
NTRS-C2.5	2.5	6	32	29	26	4	14	3	6
NTRS-C3	3	6	34	31	28	5	15	3	6
NTRS-C3.5	3.5	9	36	33	30	5	16	3	8
NTRS-C4	4	10	40	37	34	5	17	3	8
NTRS-C5	5	12	42	39	36	6	18	3	9
NTRS-C6	6	14	44	40	36	7	19	4	11
NTRS-C8	8	16	56	52	48	9	24	4	12
NTRS-C10	10	20	58	54	50	11	24	4	14
NTRS-C12	12	24	70	66	62	13	31	4	16
NTRS-C14	14	30	80	75	70	17	35	5	20
NTRS-C16	16	36	90	85	80	17	40	5	23
NTRS-C18	18	40	102	97	92	18	47	5	25
NTRS-C20	20	42	108	103	98	21	50	5	26
NTRS-C22	22	48	116	111	106	23	54	5	29
NTRS-C24	24	48	130	125	120	26	61	5	29

* Other models and custom designs are available upon request. Dimensions subject to change without notice. All silencers are equipped with drain ports on inlet side. The silencer is all welded construction and coated with high heat black paint for maximum durability.

** Standard inlet/outlet position.

OPTIONS

- Versatile connections including ANSI pattern flanges, NPT, slip-on, engine flange, schedule 40 and others
- Aluminized Steel, Stainless Steel 304 or 316 construction
- Horizontal or vertical mounting brackets and lifting lugs

ACCESSORIES

- Hardware Kits
- Flexible connectors and expansion joints
- Elbows
- Thimbles
- Raincaps
- Thermal insulation: integrated or with thermal insulation blankets

Please see our accessories catalog for a complete listing.