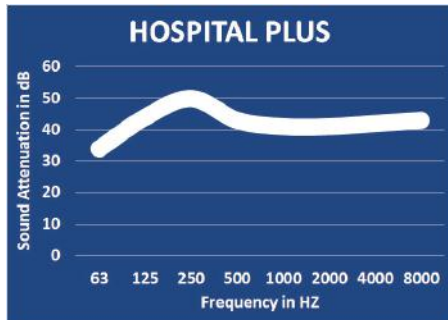


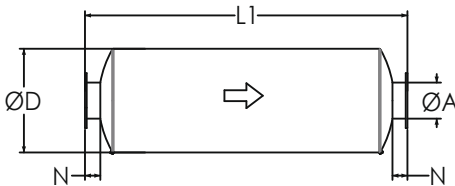
# Hospital Plus Grade Silencers

## Model NTHP-C (Cylindrical), 40-50 dBA

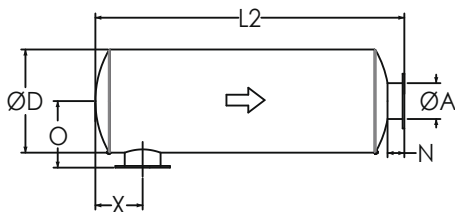
### TYPICAL ATTENUATION CURVE



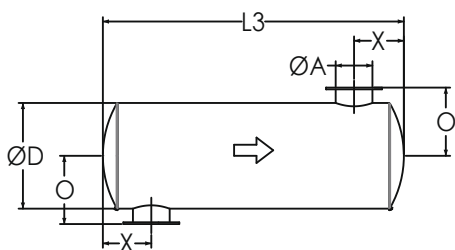
### TYPICAL CONFIGURATIONS



END IN END OUT (EI-EO)



SIDE IN END OUT (SI-EO)



SIDE IN SIDE OUT (SI-SO)

Nett Technologies' Hospital Plus Grade Silencers are designed to achieve maximum performance with the least amount of backpressure. The silencers are Reactive Silencers and are typically used for reciprocating or positive displacement engines where noise level regulations are critically-high.

### FEATURES & BENEFITS

- Over 25 years of excellence in manufacturing noise and emission control solutions
- Compact modular designs providing ease of installations, less weight and less foot-print
- Responsive lead time for both standard and custom designs to meet your needs
- Customized engineered systems solutions to meet challenging integration and engine requirements

Contact Nett Technologies with your projects design requirements and specifications for optimized noise control solutions.

### OPTIONS

- Versatile connections including ANSI pattern flanges, NPT, slip-on, engine flange, schedule 40 and others
- Aluminized Steel, Stainless Steel 304 or 316 construction
- Horizontal or vertical mounting brackets and lifting lugs

### ACCESSORIES

- Hardware Kits
- Flexible connectors and expansion joints
- Elbows
- Thimbles
- Raincaps
- Thermal insulation: integrated or with thermal insulation blankets

Please see our accessories catalog for a complete listing.

### PRODUCT DIMENSIONS (in)

Model*	A	D	L1	L2	L3	X**	X	N	O
	Outlet	Dia	EI-EO	SI-EO	SI-SO	Min	Max	Nipple	O
NTHP-C1	1	6	28	26	24	3	9	2	5
NTHP-C1.5	1.5	8	32	30	28	3	9	2	6
NTHP-C2	2	9	34	31	28	4	10	3	8
NTHP-C2.5	2.5	9	40	37	34	5	12	3	8
NTHP-C3	3	10	46	43	40	5	13	3	8
NTHP-C3.5	3.5	12	56	53	50	6	15	3	9
NTHP-C4	4	14	66	63	60	7	17	3	10
NTHP-C5	5	16	76	73	70	8	20	3	11
NTHP-C6	6	20	72	68	64	9	23	4	14
NTHP-C8	8	24	100	96	92	11	28	4	16
NTHP-C10	10	24	120	116	112	15	32	4	16
NTHP-C12	12	30	132	128	124	16	35	4	19
NTHP-C14	14	36	142	137	132	16	37	5	23
NTHP-C16	16	40	180	175	170	17	49	5	25
NTHP-C18	18	42	190	185	180	20	52	5	26
NTHP-C20	20	48	200	195	190	22	54	5	29
NTHP-C22	22	50	210	205	200	25	57	5	30
NTHP-C24	24	50	230	225	220	27	63	5	30

\* Other models and custom designs are available upon request. Dimensions subject to change without notice. All silencers are equipped with drain ports on inlet side. The silencer is all welded construction and coated with high heat black paint for maximum durability.

\*\* Standard inlet/outlet position.