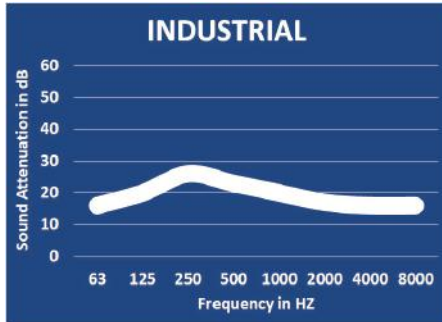


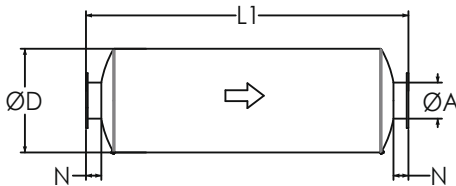
Industrial Grade Silencers

Model NTIN-C (Cylindrical), 15-20 dBA

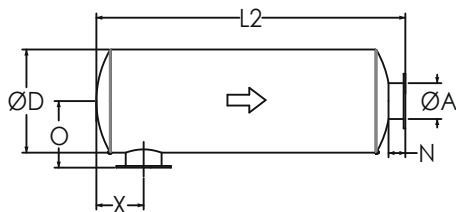
TYPICAL ATTENUATION CURVE



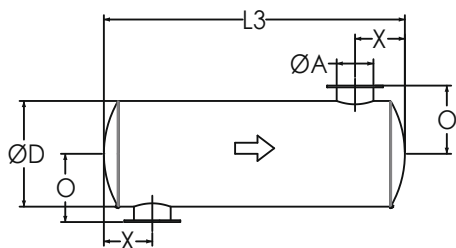
TYPICAL CONFIGURATIONS



END IN END OUT (EI-EO)



SIDE IN END OUT (SI-EO)



SIDE IN SIDE OUT (SI-SO)

Nett Technologies' Industrial Grade Silencers are designed to achieve maximum performance with the least amount of backpressure.

The silencers are Reactive Silencers and are typically used for reciprocating or positive displacement engines where noise level regulations are low.

FEATURES & BENEFITS

- Over 25 years of excellence in manufacturing noise and emission control solutions
- Compact modular designs providing ease of installations, less weight and less foot-print
- Responsive lead time for both standard and custom designs to meet your needs
- Customized engineered systems solutions to meet challenging integration and engine requirements

Contact Nett Technologies with your projects design requirements and specifications for optimized noise control solutions.

OPTIONS

- Versatile connections including ANSI pattern flanges, NPT, slip-on, engine flange, schedule 40 and others
- Aluminized Steel, Stainless Steel 304 or 316 construction
- Horizontal or vertical mounting brackets and lifting lugs

ACCESSORIES

- Hardware Kits
- Flexible connectors and expansion joints
- Elbows
- Thimbles
- Raincaps
- Thermal insulation: integrated or with thermal insulation blankets

Please see our accessories catalog for a complete listing.

PRODUCT DIMENSIONS (in)

Model*	A	D	L1	L2	L3	X**	X	N	O
	Outlet	Dia	EI-EO	SI-EO	SI-SO	Min	Max	Nipple	O
NTIN-C1	1	4	20	18	16	3	7	2	4
NTIN-C1.5	1.5	6	22	20	18	3	8	2	5
NTIN-C2	2	6	22	19	16	3	8	3	6
NTIN-C2.5	2.5	6	24	21	18	4	9	3	6
NTIN-C3	3	8	26	23	20	5	10	3	7
NTIN-C3.5	3.5	9	28	25	22	5	11	3	8
NTIN-C4	4	10	32	29	26	5	12	3	8
NTIN-C5	5	12	36	33	30	6	14	3	9
NTIN-C6	6	14	40	36	32	7	16	4	11
NTIN-C8	8	16	50	46	42	8	21	4	12
NTIN-C10	10	20	52	48	44	11	21	4	14
NTIN-C12	12	24	62	58	54	12	26	4	16
NTIN-C14	14	30	74	69	64	15	31	5	20
NTIN-C16	16	36	82	77	72	18	35	5	23
NTIN-C18	18	40	94	89	84	18	42	5	25
NTIN-C20	20	40	110	105	100	19	52	5	25
NTIN-C22	22	48	118	113	108	22	56	5	29
NTIN-C24	24	48	130	125	120	24	62	5	29

* Other models and custom designs are available upon request. Dimensions subject to change without notice. All silencers are equipped with drain ports on inlet side. The silencer is all welded construction and coated with high heat black paint for maximum durability.

** Standard inlet/outlet position.