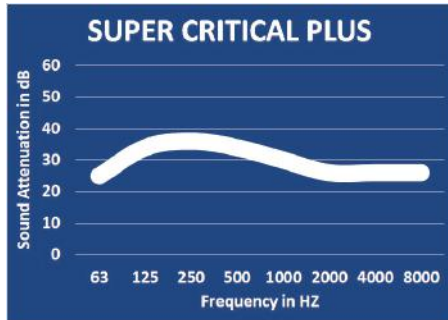


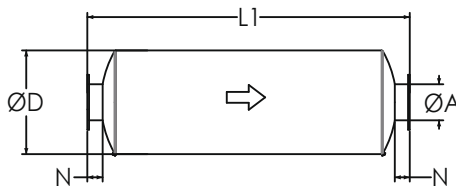
# Super Critical Plus Grade Silencers

## Model NTSP-C (Cylindrical), 33-38 dBA

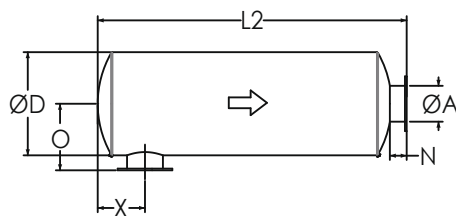
### TYPICAL ATTENUATION CURVE



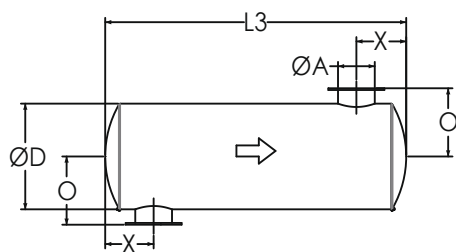
### TYPICAL CONFIGURATIONS



END IN END OUT (EI-EO)



SIDE IN END OUT (SI-EO)



SIDE IN SIDE OUT (SI-SO)

Nett Technologies' Super Critical Plus Grade Silencers are designed to achieve maximum performance with the least amount of backpressure. The silencers are Reactive Silencers and are typically used for reciprocating or positive displacement engines where noise level regulations are medium-high.

### FEATURES & BENEFITS

- Over 25 years of excellence in manufacturing noise and emission control solutions
- Compact modular designs providing ease of installations, less weight and less foot-print
- Responsive lead time for both standard and custom designs to meet your needs
- Customized engineered systems solutions to meet challenging integration and engine requirements

Contact Nett Technologies with your projects design requirements and specifications for optimized noise control solutions.

### PRODUCT DIMENSIONS (in)

Model*	A	D	L1	L2	L3	X**	X	N	O
	Outlet	Dia	EI-EO	SI-EO	SI-SO	Min	Max	Nipple	O
NTSP-C1	1	6	28	26	24	3	14	2	5
NTSP-C1.5	1.5	8	30	28	26	3	17	2	6
NTSP-C2	2	9	34	31	28	4	20	3	8
NTSP-C2.5	2.5	9	38	35	32	5	23	3	8
NTSP-C3	3	10	44	41	38	5	27	3	8
NTSP-C3.5	3.5	12	46	43	40	6	28	3	9
NTSP-C4	4	14	52	49	46	6	31	3	10
NTSP-C5	5	16	58	55	52	7	35	3	11
NTSP-C6	6	16	64	60	56	8	40	4	12
NTSP-C8	8	20	72	68	64	9	45	4	14
NTSP-C10	10	24	80	76	72	12	49	4	16
NTSP-C12	12	30	98	94	90	14	61	4	19
NTSP-C14	14	36	104	99	94	16	63	5	23
NTSP-C16	16	36	118	113	108	17	72	5	23
NTSP-C18	18	42	126	121	116	20	78	5	26
NTSP-C20	20	48	146	141	136	22	92	5	29
NTSP-C22	22	50	150	145	140	25	93	5	30
NTSP-C24	24	50	174	169	164	27	112	5	30

\* Other models and custom designs are available upon request. Dimensions subject to change without notice. All silencers are equipped with drain ports on inlet side. The silencer is all welded construction and coated with high heat black paint for maximum durability.

\*\* Standard inlet/outlet position.

### OPTIONS

- Versatile connections including ANSI pattern flanges, NPT, slip-on, engine flange, schedule 40 and others
- Aluminized Steel, Stainless Steel 304 or 316 construction
- Horizontal or vertical mounting brackets and lifting lugs

### ACCESSORIES

- Hardware Kits
- Flexible connectors and expansion joints
- Elbows
- Thimbles
- Raincaps
- Thermal insulation: integrated or with thermal insulation blankets

Please see our accessories catalog for a complete listing.