

# Super Hospital Plus Grade Silencers

## Rectangular Shape with 2" Insulation (50-60 dBA). Model NTSH2-R

Nett Technologies' Super Hospital Plus Silencers are designed to achieve maximum performance with the least amount of backpressure.

These reactive/absorptive silencers are used for reciprocating or positive displacement engines where noise level regulations are extreme.

### FEATURES & BENEFITS

- Over 25 years of excellence in manufacturing noise and emission control solutions
- Compact modular designs providing ease of installations, less weight and less foot-print
- Responsive lead time for both standard and custom designs to meet your needs
- Customized engineered system solutions to meet challenging integration and engine requirements

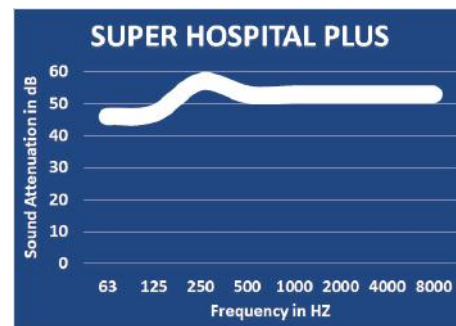
### OPTIONS

- Versatile connections including ANSI pattern flanges, NPT, slip-on, engine flange, schedule 40 and others
- Aluminized Steel, Stainless Steel 304 or 316 construction
- Two inlet configuration is available upon request

### ACCESSORIES

- Hardware Kits
- Flexible connectors and expansion joints
- Elbows
- Thimbles
- Raincaps
- Thermal insulation: integrated or with thermal insulation blankets

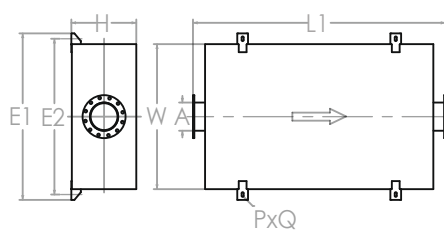
### TYPICAL ATTENUATION CURVE



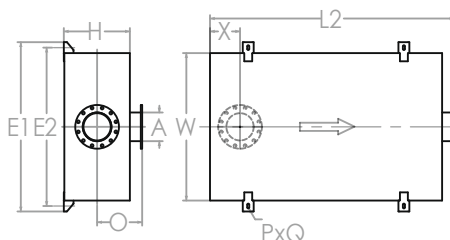
Please see our accessories catalog for a complete listing.

Contact Nett Technologies with your projects design requirements and specifications for optimized noise control solutions.

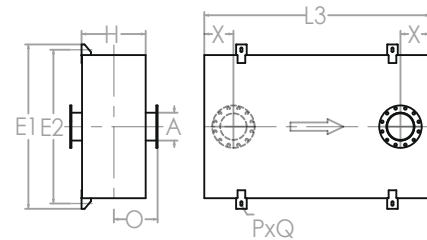
### TYPICAL CONFIGURATIONS



END IN END OUT (EI-EO)



BOTTOM IN END OUT (BI-EO)



BOTTOM IN TOP OUT (BI-TO)

### PRODUCT DIMENSIONS (in)

Model*	A	W	H	L1	L2	L3	O	X**	X	E1	E2	P	Q
	Outlet	Width	Height	EI-EO	BI-EO	BI-TO		Min	Max			Slot Dia	Slot L
NTSH-T2-R4	4	30	12	62	58	54	4	4.5	26	37	33	0.75	1.75
NTSH-T2-R5	5	36	14	68	64	60	4	5	29	43	39	0.75	1.75
NTSH-T2-R6	6	48	14	80	76	72	4	5.5	35	56	52	1	2
NTSH-T2-R8	8	60	16	94	90	86	4	6.5	42	68	64	1	2
NTSH-T2-R10	10	68	18	104	100	96	4	7.5	47	76	72	1	2
NTSH-T2-R12	12	72	22	108	104	100	4	8.5	49	80	76	1	2
NTSH-T2-R14	14	72	26	112	108	104	4	9.5	51	80	76	1	2
NTSH-T2-R16	16	80	28	120	116	112	4	10.5	55	88	84	1	2
NTSH-T2-R18	18	92	30	128	124	120	4	11.5	59	102	96.75	1.25	2.25
NTSH-T2-R20	20	94	32	140	136	132	4	12.5	65	104	98.75	1.25	2.25
NTSH-T2-R22	22	96	34	144	140	136	4	13.5	67	106	100.75	1.25	2.25
NTSH-T2-R24	24	100	36	162	158	154	4	14.5	76	110	104.75	1.25	2.25

\* This 2" internally insulated model provides a great reduction in the outer surface temperature. Other models and custom designs are available upon request. Dimensions subject to change without notice. All silencers are equipped with drain ports on inlet side. The silencer is all welded construction and coated with high heat black paint for maximum durability.

\*\* Standard inlet/outlet position.