

*Built better, priced better!*



# GENERATOR SILENCERS

*FROM THE MANUFACTURER*

# Table of Content

| Cylindrical Silencers |                                    |      |
|-----------------------|------------------------------------|------|
| Model                 | Description                        | Page |
| NTIN-C                | Industrial Grade Silencer          | 1    |
| NTRS-C                | Residential Grade Silencer         | 2    |
| NTRP-C                | Residential Plus Grade Silencer    | 3    |
| NTCR-C                | Critical Grade Silencer            | 4    |
| NTCP-C                | Critical Plus Grade Silencer       | 5    |
| NTSC-C                | Super Critical Grade Silencer      | 6    |
| NTSP-C                | Super Critical Plus Grade Silencer | 7    |
| NTHO-C                | Hospital Grade Silencer            | 8    |
| NTHP-C                | Hospital Plus Grade Silencer       | 9    |
| NTSH-C                | Super Hospital Plus Grade Silencer | 10   |

| Disc (Hockey Puck) Silencers |  |      |
|------------------------------|--|------|
| Model                        | Description                                      | Page |
| NTRS-D                       | Residential Grade Silencer                       | 11   |
| NTRS1-D                      | Residential Grade Silencer with 1" Insulation    | 12   |
| NTRS2-D                      | Residential Grade Silencer with 2" Insulation    | 13   |
| NTCR-D                       | Critical Grade Silencer                          | 14   |
| NTCR1-D                      | Critical Grade Silencer with 1" Insulation       | 15   |
| NTCR2-D                      | Critical Grade Silencer with 2" Insulation       | 16   |
| NTSC-D                       | Super Critical Grade Silencer                    | 17   |
| NTSC1-D                      | Super Critical Grade Silencer with 1" Insulation | 18   |
| NTSC2-D                      | Super Critical Grade Silencer with 2" Insulation | 19   |
| NTHO1-D                      | Hospital Grade Silencer with 1" Insulation       | 20   |
| NTHO2-D                      | Hospital Grade Silencer with 2" Insulation       | 21   |
| NTHP2-D                      | Hospital Plus Grade Silencer with 2" Insulation  | 22   |

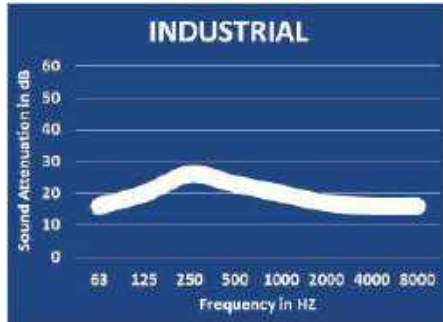
| Rectangular Silencers |  |      |
|-----------------------|--|------|
| Model                 | Description  | Page |
| NTRS-R                | Residential Grade Silencer                         | 23   |
| NTRS1-R               | Residential Grade Silencer with 1" Insulation      | 24   |
| NTRS2-R               | Residential Grade Silencer with 2" Insulation      | 25   |
| NTCR-R                | Critical Grade Silencer                            | 26   |
| NTCR1-R               | Critical Grade Silencer with 1" Insulation         | 27   |
| NTCR2-R               | Critical Grade Silencer with 2" Insulation         | 28   |
| NTSC-R                | Super Critical Grade Silencer                      | 29   |
| NTSC1-R               | Super Critical Grade Silencer with 1" Insulation   | 30   |
| NTSC2-R               | Super Critical Grade Silencer with 2" Insulation   | 31   |
| NTHO1-R               | Hospital Grade Silencer with 1" Insulation         | 32   |
| NTHO2-R               | Hospital Grade Silencer with 2" Insulation         | 33   |
| NTHP1-R               | Hospital Plus Grade Silencer with 1" Insulation    | 34   |
| NTHP2-R               | Hospital Plus Grade Silencer with 2" Insulation    | 35   |
| NTHE2-R               | Hospital Extreme Grade Silencer with 2" Insulation | 36   |

This catalog is in a working progress. If you don't see the required silencer, please contact us. We offer many other silencers including custom designs.

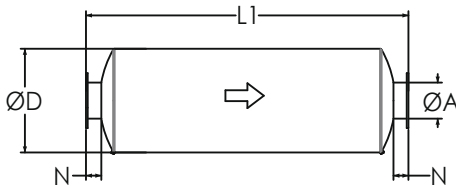
# Industrial Grade Silencers

## Model NTIN-C (Cylindrical), 15-20 dBA

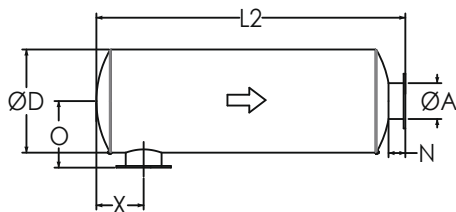
### TYPICAL ATTENUATION CURVE



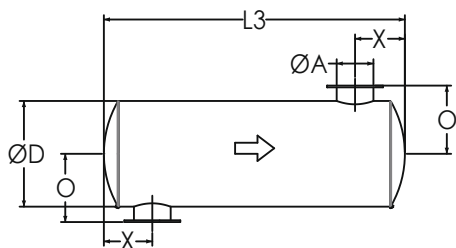
### TYPICAL CONFIGURATIONS



END IN END OUT (EI-EO)



SIDE IN END OUT (SI-EO)



SIDE IN SIDE OUT (SI-SO)

Nett Technologies' Industrial Grade Silencers are designed to achieve maximum performance with the least amount of backpressure.

The silencers are Reactive Silencers and are typically used for reciprocating or positive displacement engines where noise level regulations are low.

### FEATURES & BENEFITS

- Over 25 years of excellence in manufacturing noise and emission control solutions
- Compact modular designs providing ease of installations, less weight and less foot-print
- Responsive lead time for both standard and custom designs to meet your needs
- Customized engineered systems solutions to meet challenging integration and engine requirements

Contact Nett Technologies with your projects design requirements and specifications for optimized noise control solutions.

### OPTIONS

- Versatile connections including ANSI pattern flanges, NPT, slip-on, engine flange, schedule 40 and others
- Aluminized Steel, Stainless Steel 304 or 316 construction
- Horizontal or vertical mounting brackets and lifting lugs

### ACCESSORIES

- Hardware Kits
- Flexible connectors and expansion joints
- Elbows
- Thimbles
- Raincaps
- Thermal insulation: integrated or with thermal insulation blankets

Please see our accessories catalog for a complete listing.

### PRODUCT DIMENSIONS (in)

| Model*    | A      | D   | L1    | L2    | L3    | X** | X   | N      | O  |
|-----------|--------|-----|-------|-------|-------|-----|-----|--------|----|
|           | Outlet | Dia | EI-EO | SI-EO | SI-SO | Min | Max | Nipple | O  |
| NTIN-C1   | 1      | 4   | 20    | 18    | 16    | 3   | 7   | 2      | 4  |
| NTIN-C1.5 | 1.5    | 6   | 22    | 20    | 18    | 3   | 8   | 2      | 5  |
| NTIN-C2   | 2      | 6   | 22    | 19    | 16    | 3   | 8   | 3      | 6  |
| NTIN-C2.5 | 2.5    | 6   | 24    | 21    | 18    | 4   | 9   | 3      | 6  |
| NTIN-C3   | 3      | 8   | 26    | 23    | 20    | 5   | 10  | 3      | 7  |
| NTIN-C3.5 | 3.5    | 9   | 28    | 25    | 22    | 5   | 11  | 3      | 8  |
| NTIN-C4   | 4      | 10  | 32    | 29    | 26    | 5   | 12  | 3      | 8  |
| NTIN-C5   | 5      | 12  | 36    | 33    | 30    | 6   | 14  | 3      | 9  |
| NTIN-C6   | 6      | 14  | 40    | 36    | 32    | 7   | 16  | 4      | 11 |
| NTIN-C8   | 8      | 16  | 50    | 46    | 42    | 8   | 21  | 4      | 12 |
| NTIN-C10  | 10     | 20  | 52    | 48    | 44    | 11  | 21  | 4      | 14 |
| NTIN-C12  | 12     | 24  | 62    | 58    | 54    | 12  | 26  | 4      | 16 |
| NTIN-C14  | 14     | 30  | 74    | 69    | 64    | 15  | 31  | 5      | 20 |
| NTIN-C16  | 16     | 36  | 82    | 77    | 72    | 18  | 35  | 5      | 23 |
| NTIN-C18  | 18     | 40  | 94    | 89    | 84    | 18  | 42  | 5      | 25 |
| NTIN-C20  | 20     | 40  | 110   | 105   | 100   | 19  | 52  | 5      | 25 |
| NTIN-C22  | 22     | 48  | 118   | 113   | 108   | 22  | 56  | 5      | 29 |
| NTIN-C24  | 24     | 48  | 130   | 125   | 120   | 24  | 62  | 5      | 29 |

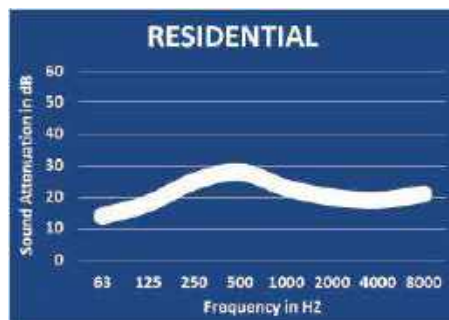
\* Other models and custom designs are available upon request. Dimensions subject to change without notice. All silencers are equipped with drain ports on inlet side. The silencer is all welded construction and coated with high heat black paint for maximum durability.

\*\* Standard inlet/outlet position.

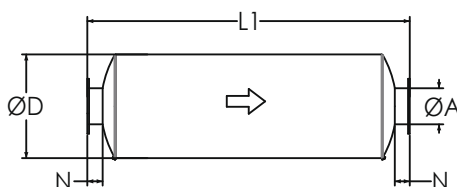
# Residential Grade Silencers

## Model NTRS-C (Cylindrical), 20-25 dBA

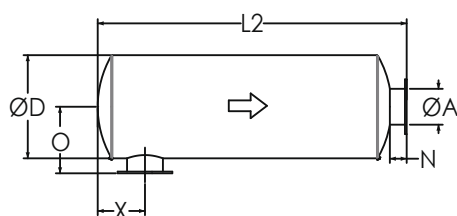
### TYPICAL ATTENUATION CURVE



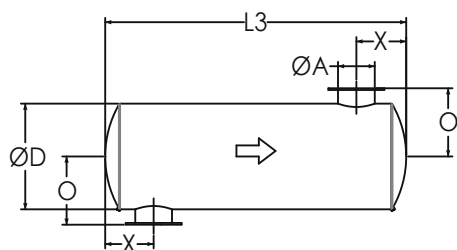
### TYPICAL CONFIGURATIONS



END IN END OUT (EI-EO)



SIDE IN END OUT (SI-EO)



SIDE IN SIDE OUT (SI-SO)

Nett Technologies' Residential Grade Silencers are designed to achieve maximum performance with the least amount of backpressure. The silencers are Reactive Silencers and are typically used for reciprocating or positive displacement engines where noise level regulations are medium-low.

### FEATURES & BENEFITS

- Over 25 years of excellence in manufacturing noise and emission control solutions
- Compact modular designs providing ease of installations, less weight and less foot-print
- Responsive lead time for both standard and custom designs to meet your needs
- Customized engineered systems solutions to meet challenging integration and engine requirements

Contact Nett Technologies with your projects design requirements and specifications for optimized noise control solutions.

### OPTIONS

- Versatile connections including ANSI pattern flanges, NPT, slip-on, engine flange, schedule 40 and others
- Aluminized Steel, Stainless Steel 304 or 316 construction
- Horizontal or vertical mounting brackets and lifting lugs

### ACCESSORIES

- Hardware Kits
- Flexible connectors and expansion joints
- Elbows
- Thimbles
- Raincaps
- Thermal insulation: integrated or with thermal insulation blankets

Please see our accessories catalog for a complete listing.

### PRODUCT DIMENSIONS (in)

| Model*    | A      | D   | L1    | L2    | L3    | X** | X   | N      | O  |
|-----------|--------|-----|-------|-------|-------|-----|-----|--------|----|
|           | Outlet | Dia | EI-EO | SI-EO | SI-SO | Min | Max | Nipple | O  |
| NTRS-C1   | 1      | 4   | 20    | 18    | 16    | 3   | 10  | 2      | 4  |
| NTRS-C1.5 | 1.5    | 6   | 28    | 26    | 24    | 3   | 12  | 2      | 5  |
| NTRS-C2   | 2      | 6   | 28    | 25    | 22    | 4   | 12  | 3      | 6  |
| NTRS-C2.5 | 2.5    | 6   | 32    | 29    | 26    | 4   | 14  | 3      | 6  |
| NTRS-C3   | 3      | 6   | 34    | 31    | 28    | 5   | 15  | 3      | 6  |
| NTRS-C3.5 | 3.5    | 9   | 36    | 33    | 30    | 5   | 16  | 3      | 8  |
| NTRS-C4   | 4      | 10  | 40    | 37    | 34    | 5   | 17  | 3      | 8  |
| NTRS-C5   | 5      | 12  | 42    | 39    | 36    | 6   | 18  | 3      | 9  |
| NTRS-C6   | 6      | 14  | 44    | 40    | 36    | 7   | 19  | 4      | 11 |
| NTRS-C8   | 8      | 16  | 56    | 52    | 48    | 9   | 24  | 4      | 12 |
| NTRS-C10  | 10     | 20  | 58    | 54    | 50    | 11  | 24  | 4      | 14 |
| NTRS-C12  | 12     | 24  | 70    | 66    | 62    | 13  | 31  | 4      | 16 |
| NTRS-C14  | 14     | 30  | 80    | 75    | 70    | 17  | 35  | 5      | 20 |
| NTRS-C16  | 16     | 36  | 90    | 85    | 80    | 17  | 40  | 5      | 23 |
| NTRS-C18  | 18     | 40  | 102   | 97    | 92    | 18  | 47  | 5      | 25 |
| NTRS-C20  | 20     | 42  | 108   | 103   | 98    | 21  | 50  | 5      | 26 |
| NTRS-C22  | 22     | 48  | 116   | 111   | 106   | 23  | 54  | 5      | 29 |
| NTRS-C24  | 24     | 48  | 130   | 125   | 120   | 26  | 61  | 5      | 29 |

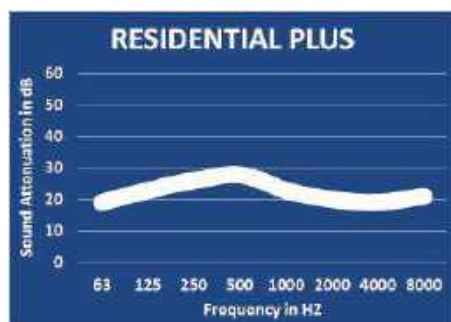
\* Other models and custom designs are available upon request. Dimensions subject to change without notice. All silencers are equipped with drain ports on inlet side. The silencer is all welded construction and coated with high heat black paint for maximum durability.

\*\* Standard inlet/outlet position.

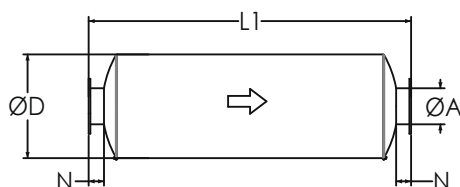
# Residential Plus Grade Silencers

## Model NTRP-C (Cylindrical), 23-28 dBA

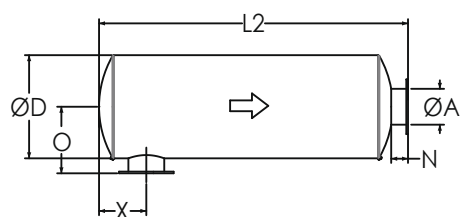
### TYPICAL ATTENUATION CURVE



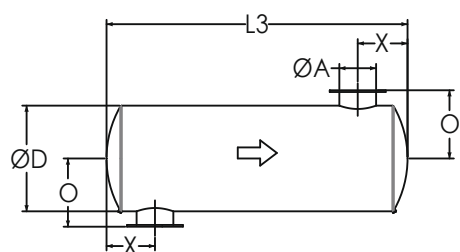
### TYPICAL CONFIGURATIONS



END IN END OUT (EI-EO)



SIDE IN END OUT (SI-EO)



SIDE IN SIDE OUT (SI-SO)

Nett Technologies' Residential Plus Grade Silencers are designed to achieve maximum performance with the least amount of backpressure. The silencers are Reactive Silencers and are typically used for reciprocating or positive displacement engines where noise level regulations are moderate.

### FEATURES & BENEFITS

- Over 25 years of excellence in manufacturing noise and emission control solutions
- Compact modular designs providing ease of installations, less weight and less foot-print
- Responsive lead time for both standard and custom designs to meet your needs
- Customized engineered systems solutions to meet challenging integration and engine requirements

Contact Nett Technologies with your projects design requirements and specifications for optimized noise control solutions.

### OPTIONS

- Versatile connections including ANSI pattern flanges, NPT, slip-on, engine flange, schedule 40 and others
- Aluminized Steel, Stainless Steel 304 or 316 construction
- Horizontal or vertical mounting brackets and lifting lugs

### ACCESSORIES

- Hardware Kits
- Flexible connectors and expansion joints
- Elbows
- Thimbles
- Raincaps
- Thermal insulation: integrated or with thermal insulation blankets

Please see our accessories catalog for a complete listing.

### PRODUCT DIMENSIONS (in)

| Model*    | A      | D   | L1    | L2    | L3    | X** | X   | N      | O  |
|-----------|--------|-----|-------|-------|-------|-----|-----|--------|----|
|           | Outlet | Dia | EI-EO | SI-EO | SI-SO | Min | Max | Nipple | O  |
| NTRP-C1   | 1      | 4   | 20    | 18    | 16    | 3   | 10  | 2      | 4  |
| NTRP-C1.5 | 1.5    | 6   | 28    | 26    | 24    | 3   | 12  | 2      | 5  |
| NTRP-C2   | 2      | 6   | 28    | 25    | 22    | 4   | 12  | 3      | 6  |
| NTRP-C2.5 | 2.5    | 6   | 32    | 29    | 26    | 4   | 14  | 3      | 6  |
| NTRP-C3   | 3      | 6   | 34    | 31    | 28    | 5   | 15  | 3      | 6  |
| NTRP-C3.5 | 3.5    | 9   | 36    | 33    | 30    | 5   | 16  | 3      | 8  |
| NTRP-C4   | 4      | 10  | 40    | 37    | 34    | 5   | 17  | 3      | 8  |
| NTRP-C5   | 5      | 12  | 42    | 39    | 36    | 6   | 18  | 3      | 9  |
| NTRP-C6   | 6      | 14  | 44    | 40    | 36    | 7   | 19  | 4      | 11 |
| NTRP-C8   | 8      | 16  | 56    | 52    | 48    | 9   | 24  | 4      | 12 |
| NTRP-C10  | 10     | 20  | 58    | 54    | 50    | 11  | 24  | 4      | 14 |
| NTRP-C12  | 12     | 24  | 70    | 66    | 62    | 13  | 31  | 4      | 16 |
| NTRP-C14  | 14     | 30  | 80    | 75    | 70    | 17  | 35  | 5      | 20 |
| NTRP-C16  | 16     | 36  | 90    | 85    | 80    | 17  | 40  | 5      | 23 |
| NTRP-C18  | 18     | 40  | 102   | 97    | 92    | 18  | 47  | 5      | 25 |
| NTRP-C20  | 20     | 42  | 108   | 103   | 98    | 21  | 50  | 5      | 26 |
| NTRP-C22  | 22     | 48  | 116   | 111   | 106   | 23  | 54  | 5      | 29 |
| NTRP-C24  | 24     | 48  | 130   | 125   | 120   | 26  | 61  | 5      | 29 |

\* Other models and custom designs are available upon request. Dimensions subject to change without notice. All silencers are equipped with drain ports on inlet side. The silencer is all welded construction and coated with high heat black paint for maximum durability.

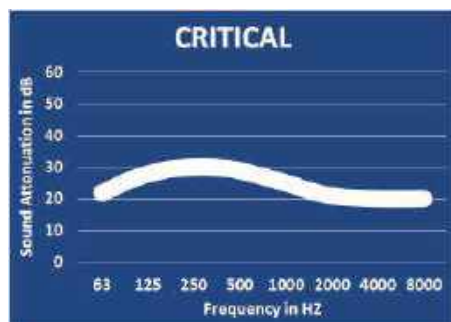
\*\* Standard inlet/outlet position.



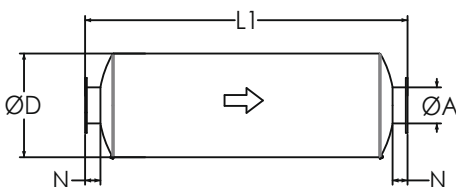
# Critical Grade Silencers

## Model NTCR-C (Cylindrical), 25-30 dBA

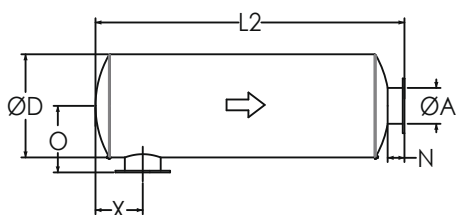
### TYPICAL ATTENUATION CURVE



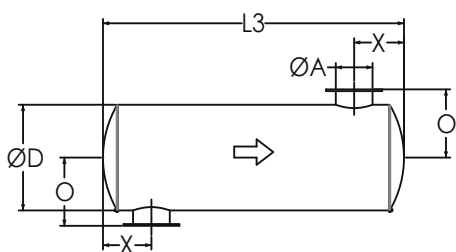
### TYPICAL CONFIGURATIONS



END IN END OUT (EI-EO)



SIDE IN END OUT (SI-EO)



SIDE IN SIDE OUT (SI-SO)

Nett Technologies' Critical Grade Silencers are designed to achieve maximum performance with the least amount of backpressure.

The silencers are Reactive Silencers and are typically used for reciprocating or positive displacement engines where noise level regulations are moderate.

### FEATURES & BENEFITS

- Over 25 years of excellence in manufacturing noise and emission control solutions
- Compact modular designs providing ease of installations, less weight and less foot-print
- Responsive lead time for both standard and custom designs to meet your needs
- Customized engineered systems solutions to meet challenging integration and engine requirements

Contact Nett Technologies with your projects design requirements and specifications for optimized noise control solutions.

### OPTIONS

- Versatile connections including ANSI pattern flanges, NPT, slip-on, engine flange, schedule 40 and others
- Aluminized Steel, Stainless Steel 304 or 316 construction
- Horizontal or vertical mounting brackets and lifting lugs

### ACCESSORIES

- Hardware Kits
- Flexible connectors and expansion joints
- Elbows
- Thimbles
- Raincaps
- Thermal insulation: integrated or with thermal insulation blankets

Please see our accessories catalog for a complete listing.

### PRODUCT DIMENSIONS (in)

| Model*    | A      | D   | L1    | L2    | L3    | X** | X   | N      | O  |
|-----------|--------|-----|-------|-------|-------|-----|-----|--------|----|
|           | Outlet | Dia | EI-EO | SI-EO | SI-SO | Min | Max | Nipple | O  |
| NTCR-C1   | 1      | 4   | 20    | 18    | 16    | 3   | 10  | 2      | 4  |
| NTCR-C1.5 | 1.5    | 6   | 28    | 26    | 24    | 3   | 10  | 2      | 5  |
| NTCR-C2   | 2      | 8   | 30    | 27    | 24    | 4   | 13  | 3      | 7  |
| NTCR-C2.5 | 2.5    | 8   | 32    | 29    | 26    | 4   | 15  | 3      | 7  |
| NTCR-C3   | 3      | 9   | 36    | 33    | 30    | 5   | 16  | 3      | 8  |
| NTCR-C3.5 | 3.5    | 10  | 42    | 39    | 36    | 5   | 20  | 3      | 8  |
| NTCR-C4   | 4      | 12  | 50    | 47    | 44    | 6   | 24  | 3      | 9  |
| NTCR-C5   | 5      | 14  | 54    | 51    | 48    | 6   | 26  | 3      | 10 |
| NTCR-C6   | 6      | 16  | 62    | 58    | 54    | 7   | 31  | 4      | 12 |
| NTCR-C8   | 8      | 20  | 68    | 64    | 60    | 9   | 33  | 4      | 14 |
| NTCR-C10  | 10     | 24  | 92    | 88    | 84    | 12  | 47  | 4      | 16 |
| NTCR-C12  | 12     | 30  | 98    | 94    | 90    | 14  | 50  | 4      | 19 |
| NTCR-C14  | 14     | 36  | 104   | 99    | 94    | 17  | 51  | 5      | 23 |
| NTCR-C16  | 16     | 36  | 118   | 113   | 108   | 17  | 59  | 5      | 23 |
| NTCR-C18  | 18     | 40  | 126   | 121   | 116   | 18  | 64  | 5      | 25 |
| NTCR-C20  | 20     | 42  | 146   | 141   | 136   | 21  | 74  | 5      | 26 |
| NTCR-C22  | 22     | 48  | 150   | 145   | 140   | 23  | 79  | 5      | 29 |
| NTCR-C24  | 24     | 48  | 162   | 157   | 152   | 26  | 83  | 5      | 29 |

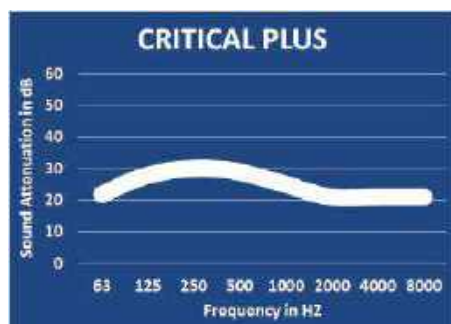
\* Other models and custom designs are available upon request. Dimensions subject to change without notice. All silencers are equipped with drain ports on inlet side. The silencer is all welded construction and coated with high heat black paint for maximum durability.

\*\* Standard inlet/outlet position.

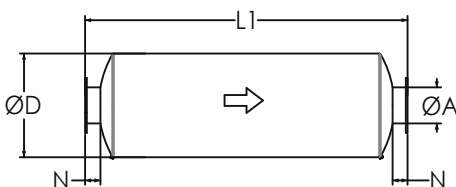
# Critical Plus Grade Silencers

## Model NTCP-C (Cylindrical), 28-33 dBA

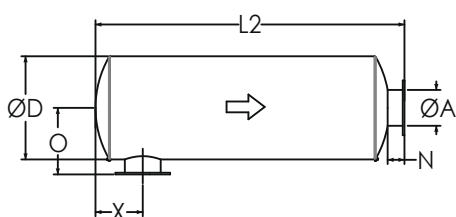
### TYPICAL ATTENUATION CURVE



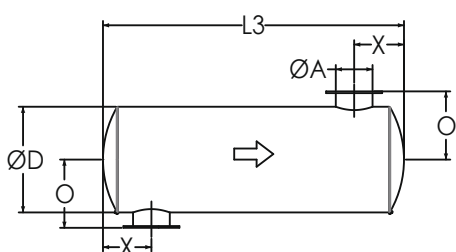
### TYPICAL CONFIGURATIONS



END IN END OUT (EI-EO)



SIDE IN END OUT (SI-EO)



SIDE IN SIDE OUT (SI-SO)

Nett Technologies' Critical Plus Grade Silencers are designed to achieve maximum performance with the least amount of backpressure. The silencers are Reactive Silencers and are typically used for reciprocating or positive displacement engines where noise level regulations are moderate.

### FEATURES & BENEFITS

- Over 25 years of excellence in manufacturing noise and emission control solutions
- Compact modular designs providing ease of installations, less weight and less foot-print
- Responsive lead time for both standard and custom designs to meet your needs
- Customized engineered systems solutions to meet challenging integration and engine requirements

Contact Nett Technologies with your projects design requirements and specifications for optimized noise control solutions.

### OPTIONS

- Versatile connections including ANSI pattern flanges, NPT, slip-on, engine flange, schedule 40 and others
- Aluminized Steel, Stainless Steel 304 or 316 construction
- Horizontal or vertical mounting brackets and lifting lugs

### ACCESSORIES

- Hardware Kits
- Flexible connectors and expansion joints
- Elbows
- Thimbles
- Raincaps
- Thermal insulation: integrated or with thermal insulation blankets

Please see our accessories catalog for a complete listing.

### PRODUCT DIMENSIONS (in)

| Model*    | A      | D   | L1    | L2    | L3    | X** | X   | N      | O  |
|-----------|--------|-----|-------|-------|-------|-----|-----|--------|----|
|           | Outlet | Dia | EI-EO | SI-EO | SI-SO | Min | Max | Nipple | O  |
| NTCP-C1   | 1      | 4   | 20    | 18    | 16    | 3   | 10  | 2      | 4  |
| NTCP-C1.5 | 1.5    | 6   | 28    | 26    | 24    | 3   | 10  | 2      | 5  |
| NTCP-C2   | 2      | 8   | 32    | 29    | 26    | 4   | 13  | 3      | 7  |
| NTCP-C2.5 | 2.5    | 8   | 32    | 29    | 26    | 5   | 15  | 3      | 7  |
| NTCP-C3   | 3      | 9   | 40    | 37    | 34    | 5   | 16  | 3      | 8  |
| NTCP-C3.5 | 3.5    | 10  | 46    | 43    | 40    | 5   | 20  | 3      | 8  |
| NTCP-C4   | 4      | 12  | 52    | 49    | 46    | 6   | 24  | 3      | 9  |
| NTCP-C5   | 5      | 14  | 58    | 55    | 52    | 6   | 26  | 3      | 10 |
| NTCP-C6   | 6      | 16  | 64    | 60    | 56    | 7   | 31  | 4      | 12 |
| NTCP-C8   | 8      | 20  | 72    | 68    | 64    | 9   | 33  | 4      | 14 |
| NTCP-C10  | 10     | 24  | 80    | 76    | 72    | 12  | 47  | 4      | 16 |
| NTCP-C12  | 12     | 30  | 98    | 94    | 90    | 14  | 50  | 4      | 19 |
| NTCP-C14  | 14     | 36  | 104   | 99    | 94    | 17  | 51  | 5      | 23 |
| NTCP-C16  | 16     | 36  | 118   | 113   | 108   | 17  | 59  | 5      | 23 |
| NTCP-C18  | 18     | 40  | 126   | 121   | 116   | 18  | 64  | 5      | 25 |
| NTCP-C20  | 20     | 42  | 146   | 141   | 136   | 21  | 74  | 5      | 26 |
| NTCP-C22  | 22     | 48  | 150   | 145   | 140   | 23  | 79  | 5      | 29 |
| NTCP-C24  | 24     | 48  | 174   | 169   | 164   | 26  | 83  | 5      | 29 |

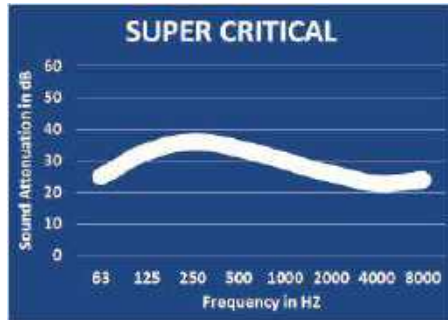
\* Other models and custom designs are available upon request. Dimensions subject to change without notice. All silencers are equipped with drain ports on inlet side. The silencer is all welded construction and coated with high heat black paint for maximum durability.

\*\* Standard inlet/outlet position.

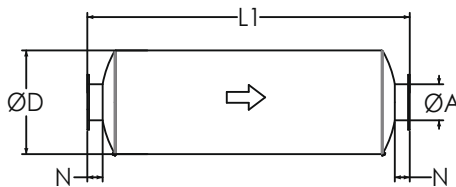
# Super Critical Grade Silencers

## Model NTSC-C (Cylindrical), 30-35 dBA

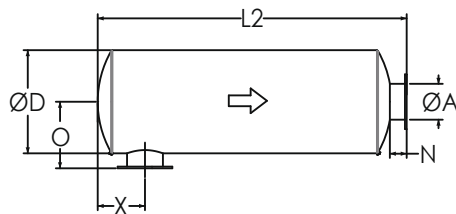
### TYPICAL ATTENUATION CURVE



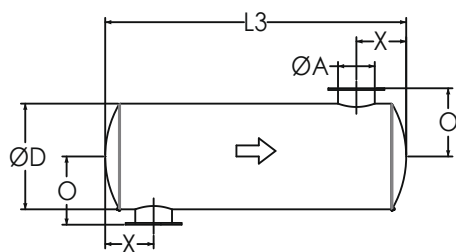
### TYPICAL CONFIGURATIONS



END IN END OUT (EI-EO)



SIDE IN END OUT (SI-EO)



SIDE IN SIDE OUT (SI-SO)

Nett Technologies' Super Critical Grade Silencers are designed to achieve maximum performance with the least amount of backpressure. The silencers are Reactive Silencers and are typically used for reciprocating or positive displacement engines where noise level regulations are medium-high.

### FEATURES & BENEFITS

- Over 25 years of excellence in manufacturing noise and emission control solutions
- Compact modular designs providing ease of installations, less weight and less foot-print
- Responsive lead time for both standard and custom designs to meet your needs
- Customized engineered systems solutions to meet challenging integration and engine requirements

Contact Nett Technologies with your projects design requirements and specifications for optimized noise control solutions.

### OPTIONS

- Versatile connections including ANSI pattern flanges, NPT, slip-on, engine flange, schedule 40 and others
- Aluminized Steel, Stainless Steel 304 or 316 construction
- Horizontal or vertical mounting brackets and lifting lugs

### ACCESSORIES

- Hardware Kits
- Flexible connectors and expansion joints
- Elbows
- Thimbles
- Raincaps
- Thermal insulation: integrated or with thermal insulation blankets

Please see our accessories catalog for a complete listing.

### PRODUCT DIMENSIONS (in)

| Model*    | A      | D   | L1    | L2    | L3    | X** | X   | N      | O  |
|-----------|--------|-----|-------|-------|-------|-----|-----|--------|----|
|           | Outlet | Dia | EI-EO | SI-EO | SI-SO | Min | Max | Nipple | O  |
| NTSC-C1   | 1      | 4   | 20    | 18    | 16    | 3   | 14  | 2      | 4  |
| NTSC-C1.5 | 1.5    | 6   | 30    | 28    | 26    | 3   | 17  | 2      | 5  |
| NTSC-C2   | 2      | 8   | 34    | 31    | 28    | 4   | 20  | 3      | 7  |
| NTSC-C2.5 | 2.5    | 8   | 38    | 35    | 32    | 5   | 23  | 3      | 7  |
| NTSC-C3   | 3      | 10  | 44    | 41    | 38    | 5   | 27  | 3      | 8  |
| NTSC-C3.5 | 3.5    | 12  | 46    | 43    | 40    | 6   | 28  | 3      | 9  |
| NTSC-C4   | 4      | 12  | 52    | 49    | 46    | 6   | 31  | 3      | 9  |
| NTSC-C5   | 5      | 14  | 58    | 55    | 52    | 7   | 35  | 3      | 10 |
| NTSC-C6   | 6      | 16  | 64    | 60    | 56    | 8   | 40  | 4      | 12 |
| NTSC-C8   | 8      | 20  | 72    | 68    | 64    | 9   | 45  | 4      | 14 |
| NTSC-C10  | 10     | 24  | 80    | 76    | 72    | 12  | 49  | 4      | 16 |
| NTSC-C12  | 12     | 30  | 98    | 94    | 90    | 14  | 61  | 4      | 19 |
| NTSC-C14  | 14     | 36  | 104   | 99    | 94    | 16  | 63  | 5      | 23 |
| NTSC-C16  | 16     | 36  | 118   | 113   | 108   | 17  | 72  | 5      | 23 |
| NTSC-C18  | 18     | 40  | 126   | 121   | 116   | 20  | 78  | 5      | 25 |
| NTSC-C20  | 20     | 42  | 146   | 141   | 136   | 22  | 92  | 5      | 26 |
| NTSC-C22  | 22     | 48  | 150   | 145   | 140   | 25  | 93  | 5      | 29 |
| NTSC-C24  | 24     | 48  | 174   | 169   | 164   | 27  | 112 | 5      | 29 |

\* Other models and custom designs are available upon request. Dimensions subject to change without notice. All silencers are equipped with drain ports on inlet side. The silencer is all welded construction and coated with high heat black paint for maximum durability.

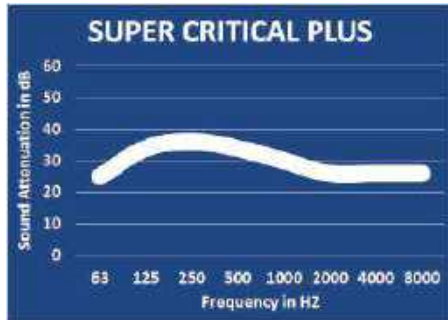
\*\* Standard inlet/outlet position.



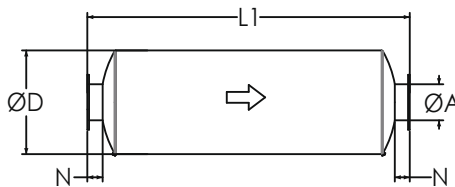
# Super Critical Plus Grade Silencers

## Model NTSP-C (Cylindrical), 33-38 dBA

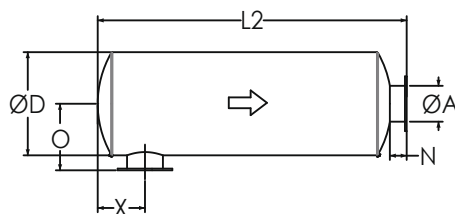
### TYPICAL ATTENUATION CURVE



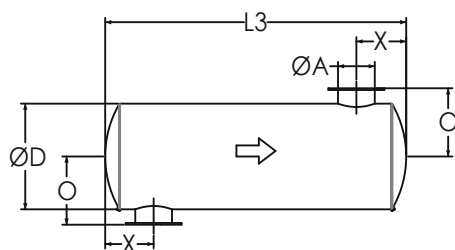
### TYPICAL CONFIGURATIONS



END IN END OUT (EI-EO)



SIDE IN END OUT (SI-EO)



SIDE IN SIDE OUT (SI-SO)

Nett Technologies' Super Critical Plus Grade Silencers are designed to achieve maximum performance with the least amount of backpressure. The silencers are Reactive Silencers and are typically used for reciprocating or positive displacement engines where noise level regulations are medium-high.

### FEATURES & BENEFITS

- Over 25 years of excellence in manufacturing noise and emission control solutions
- Compact modular designs providing ease of installations, less weight and less foot-print
- Responsive lead time for both standard and custom designs to meet your needs
- Customized engineered systems solutions to meet challenging integration and engine requirements

Contact Nett Technologies with your projects design requirements and specifications for optimized noise control solutions.

### OPTIONS

- Versatile connections including ANSI pattern flanges, NPT, slip-on, engine flange, schedule 40 and others
- Aluminized Steel, Stainless Steel 304 or 316 construction
- Horizontal or vertical mounting brackets and lifting lugs

### ACCESSORIES

- Hardware Kits
- Flexible connectors and expansion joints
- Elbows
- Thimbles
- Raincaps
- Thermal insulation: integrated or with thermal insulation blankets

Please see our accessories catalog for a complete listing.

### PRODUCT DIMENSIONS (in)

| Model*    | A      | D   | L1    | L2    | L3    | X** | X   | N      | O  |
|-----------|--------|-----|-------|-------|-------|-----|-----|--------|----|
|           | Outlet | Dia | EI-EO | SI-EO | SI-SO | Min | Max | Nipple | O  |
| NTSP-C1   | 1      | 6   | 28    | 26    | 24    | 3   | 14  | 2      | 5  |
| NTSP-C1.5 | 1.5    | 8   | 30    | 28    | 26    | 3   | 17  | 2      | 6  |
| NTSP-C2   | 2      | 9   | 34    | 31    | 28    | 4   | 20  | 3      | 8  |
| NTSP-C2.5 | 2.5    | 9   | 38    | 35    | 32    | 5   | 23  | 3      | 8  |
| NTSP-C3   | 3      | 10  | 44    | 41    | 38    | 5   | 27  | 3      | 8  |
| NTSP-C3.5 | 3.5    | 12  | 46    | 43    | 40    | 6   | 28  | 3      | 9  |
| NTSP-C4   | 4      | 14  | 52    | 49    | 46    | 6   | 31  | 3      | 10 |
| NTSP-C5   | 5      | 16  | 58    | 55    | 52    | 7   | 35  | 3      | 11 |
| NTSP-C6   | 6      | 16  | 64    | 60    | 56    | 8   | 40  | 4      | 12 |
| NTSP-C8   | 8      | 20  | 72    | 68    | 64    | 9   | 45  | 4      | 14 |
| NTSP-C10  | 10     | 24  | 80    | 76    | 72    | 12  | 49  | 4      | 16 |
| NTSP-C12  | 12     | 30  | 98    | 94    | 90    | 14  | 61  | 4      | 19 |
| NTSP-C14  | 14     | 36  | 104   | 99    | 94    | 16  | 63  | 5      | 23 |
| NTSP-C16  | 16     | 36  | 118   | 113   | 108   | 17  | 72  | 5      | 23 |
| NTSP-C18  | 18     | 42  | 126   | 121   | 116   | 20  | 78  | 5      | 26 |
| NTSP-C20  | 20     | 48  | 146   | 141   | 136   | 22  | 92  | 5      | 29 |
| NTSP-C22  | 22     | 50  | 150   | 145   | 140   | 25  | 93  | 5      | 30 |
| NTSP-C24  | 24     | 50  | 174   | 169   | 164   | 27  | 112 | 5      | 30 |

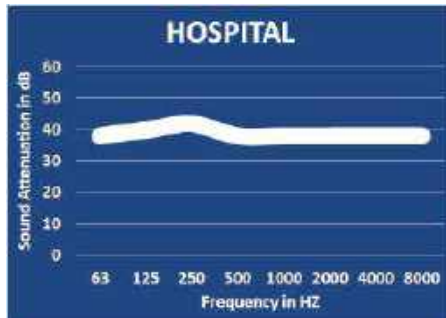
\* Other models and custom designs are available upon request. Dimensions subject to change without notice. All silencers are equipped with drain ports on inlet side. The silencer is all welded construction and coated with high heat black paint for maximum durability.

\*\* Standard inlet/outlet position.

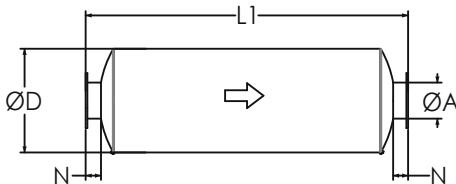
# Hospital Grade Silencers

## Model NTHO-C (Cylindrical), 35-40 dBA

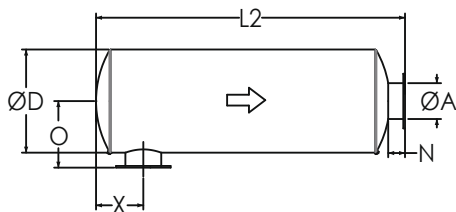
### TYPICAL ATTENUATION CURVE



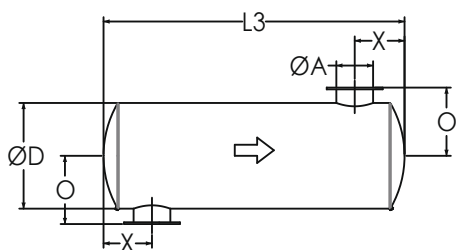
### TYPICAL CONFIGURATIONS



END IN END OUT (EI-EO)



SIDE IN END OUT (SI-EO)



SIDE IN SIDE OUT (SI-SO)

Nett Technologies' Hospital Grade Silencers are designed to achieve maximum performance with the least amount of backpressure.

The silencers are Reactive Silencers and are typically used for reciprocating or positive displacement engines where noise level regulations are high.

### FEATURES & BENEFITS

- Over 25 years of excellence in manufacturing noise and emission control solutions
- Compact modular designs providing ease of installations, less weight and less foot-print
- Responsive lead time for both standard and custom designs to meet your needs
- Customized engineered systems solutions to meet challenging integration and engine requirements

Contact Nett Technologies with your projects design requirements and specifications for optimized noise control solutions.

### OPTIONS

- Versatile connections including ANSI pattern flanges, NPT, slip-on, engine flange, schedule 40 and others
- Aluminized Steel, Stainless Steel 304 or 316 construction
- Horizontal or vertical mounting brackets and lifting lugs

### ACCESSORIES

- Hardware Kits
- Flexible connectors and expansion joints
- Elbows
- Thimbles
- Raincaps
- Thermal insulation: integrated or with thermal insulation blankets

Please see our accessories catalog for a complete listing.

### PRODUCT DIMENSIONS (in)

| Model*    | A      | D   | L1    | L2    | L3    | X** | X   | N      | O  |
|-----------|--------|-----|-------|-------|-------|-----|-----|--------|----|
|           | Outlet | Dia | EI-EO | SI-EO | SI-SO | Min | Max | Nipple | O  |
| NTHO-C1   | 1      | 6   | 28    | 26    | 24    | 3   | 9   | 2      | 5  |
| NTHO-C1.5 | 1.5    | 8   | 32    | 30    | 28    | 3   | 9   | 2      | 6  |
| NTHO-C2   | 2      | 9   | 34    | 31    | 28    | 4   | 10  | 3      | 8  |
| NTHO-C2.5 | 2.5    | 9   | 40    | 37    | 34    | 5   | 12  | 3      | 8  |
| NTHO-C3   | 3      | 10  | 46    | 43    | 40    | 5   | 13  | 3      | 8  |
| NTHO-C3.5 | 3.5    | 12  | 56    | 53    | 50    | 6   | 15  | 3      | 9  |
| NTHO-C4   | 4      | 14  | 66    | 63    | 60    | 7   | 17  | 3      | 10 |
| NTHO-C5   | 5      | 16  | 76    | 73    | 70    | 8   | 20  | 3      | 11 |
| NTHO-C6   | 6      | 20  | 72    | 68    | 64    | 9   | 23  | 4      | 14 |
| NTHO-C8   | 8      | 24  | 100   | 96    | 92    | 11  | 28  | 4      | 16 |
| NTHO-C10  | 10     | 24  | 120   | 116   | 112   | 15  | 32  | 4      | 16 |
| NTHO-C12  | 12     | 30  | 132   | 128   | 124   | 16  | 35  | 4      | 19 |
| NTHO-C14  | 14     | 36  | 142   | 137   | 132   | 16  | 37  | 5      | 23 |
| NTHO-C16  | 16     | 40  | 180   | 175   | 170   | 17  | 49  | 5      | 25 |
| NTHO-C18  | 18     | 42  | 190   | 185   | 180   | 20  | 52  | 5      | 26 |
| NTHO-C20  | 20     | 48  | 200   | 195   | 190   | 22  | 54  | 5      | 29 |
| NTHO-C22  | 22     | 50  | 210   | 205   | 200   | 25  | 57  | 5      | 30 |
| NTHO-C24  | 24     | 50  | 230   | 225   | 220   | 27  | 63  | 5      | 30 |

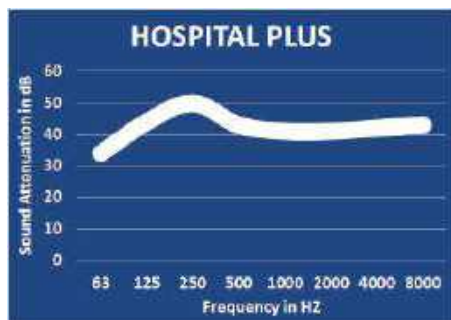
\* Other models and custom designs are available upon request. Dimensions subject to change without notice. All silencers are equipped with drain ports on inlet side. The silencer is all welded construction and coated with high heat black paint for maximum durability.

\*\* Standard inlet/outlet position.

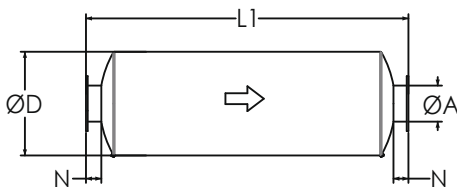
# Hospital Plus Grade Silencers

## Model NTHP-C (Cylindrical), 40-50 dBA

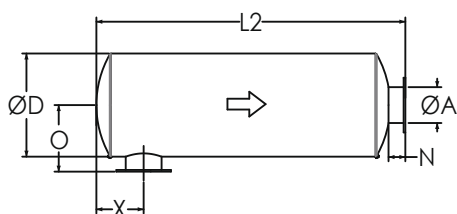
### TYPICAL ATTENUATION CURVE



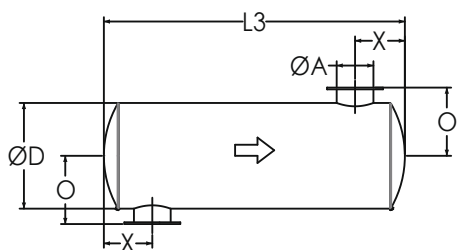
### TYPICAL CONFIGURATIONS



END IN END OUT (EI-EO)



SIDE IN END OUT (SI-EO)



SIDE IN SIDE OUT (SI-SO)

Nett Technologies' Hospital Plus Grade Silencers are designed to achieve maximum performance with the least amount of backpressure. The silencers are Reactive Silencers and are typically used for reciprocating or positive displacement engines where noise level regulations are critically-high.

### FEATURES & BENEFITS

- Over 25 years of excellence in manufacturing noise and emission control solutions
- Compact modular designs providing ease of installations, less weight and less foot-print
- Responsive lead time for both standard and custom designs to meet your needs
- Customized engineered systems solutions to meet challenging integration and engine requirements

Contact Nett Technologies with your projects design requirements and specifications for optimized noise control solutions.

### OPTIONS

- Versatile connections including ANSI pattern flanges, NPT, slip-on, engine flange, schedule 40 and others
- Aluminized Steel, Stainless Steel 304 or 316 construction
- Horizontal or vertical mounting brackets and lifting lugs

### ACCESSORIES

- Hardware Kits
- Flexible connectors and expansion joints
- Elbows
- Thimbles
- Raincaps
- Thermal insulation: integrated or with thermal insulation blankets

Please see our accessories catalog for a complete listing.

### PRODUCT DIMENSIONS (in)

| Model*    | A      | D   | L1    | L2    | L3    | X** | X   | N      | O  |
|-----------|--------|-----|-------|-------|-------|-----|-----|--------|----|
|           | Outlet | Dia | EI-EO | SI-EO | SI-SO | Min | Max | Nipple | O  |
| NTHP-C1   | 1      | 6   | 28    | 26    | 24    | 3   | 9   | 2      | 5  |
| NTHP-C1.5 | 1.5    | 8   | 32    | 30    | 28    | 3   | 9   | 2      | 6  |
| NTHP-C2   | 2      | 9   | 34    | 31    | 28    | 4   | 10  | 3      | 8  |
| NTHP-C2.5 | 2.5    | 9   | 40    | 37    | 34    | 5   | 12  | 3      | 8  |
| NTHP-C3   | 3      | 10  | 46    | 43    | 40    | 5   | 13  | 3      | 8  |
| NTHP-C3.5 | 3.5    | 12  | 56    | 53    | 50    | 6   | 15  | 3      | 9  |
| NTHP-C4   | 4      | 14  | 66    | 63    | 60    | 7   | 17  | 3      | 10 |
| NTHP-C5   | 5      | 16  | 76    | 73    | 70    | 8   | 20  | 3      | 11 |
| NTHP-C6   | 6      | 20  | 72    | 68    | 64    | 9   | 23  | 4      | 14 |
| NTHP-C8   | 8      | 24  | 100   | 96    | 92    | 11  | 28  | 4      | 16 |
| NTHP-C10  | 10     | 24  | 120   | 116   | 112   | 15  | 32  | 4      | 16 |
| NTHP-C12  | 12     | 30  | 132   | 128   | 124   | 16  | 35  | 4      | 19 |
| NTHP-C14  | 14     | 36  | 142   | 137   | 132   | 16  | 37  | 5      | 23 |
| NTHP-C16  | 16     | 40  | 180   | 175   | 170   | 17  | 49  | 5      | 25 |
| NTHP-C18  | 18     | 42  | 190   | 185   | 180   | 20  | 52  | 5      | 26 |
| NTHP-C20  | 20     | 48  | 200   | 195   | 190   | 22  | 54  | 5      | 29 |
| NTHP-C22  | 22     | 50  | 210   | 205   | 200   | 25  | 57  | 5      | 30 |
| NTHP-C24  | 24     | 50  | 230   | 225   | 220   | 27  | 63  | 5      | 30 |

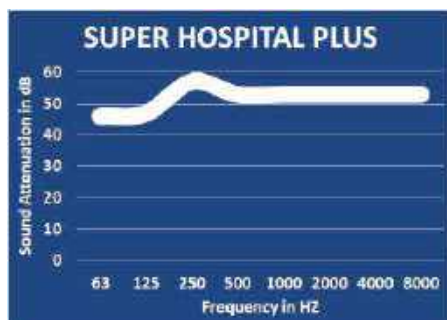
\* Other models and custom designs are available upon request. Dimensions subject to change without notice. All silencers are equipped with drain ports on inlet side. The silencer is all welded construction and coated with high heat black paint for maximum durability.

\*\* Standard inlet/outlet position.

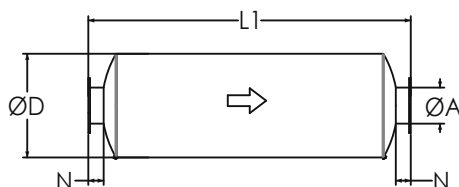
# Super Hospital Plus Silencers

## Model NTSH-C (Cylindrical), 50-60 dBA

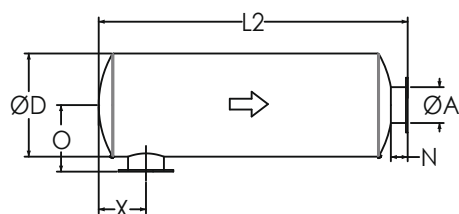
### TYPICAL ATTENUATION CURVE



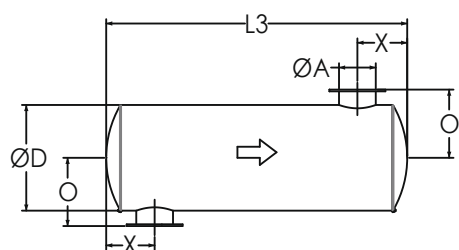
### TYPICAL CONFIGURATIONS



END IN END OUT (EI-EO)



SIDE IN END OUT (SI-EO)



SIDE IN SIDE OUT (SI-SO)

Nett Technologies' Super Hospital Plus Grade Silencers are designed to achieve maximum performance with the least amount of backpressure. The silencers are reactive and absorptive silencers which are typically used for reciprocating or positive displacement engines where noise level regulations are extreme.

### FEATURES & BENEFITS

- Over 25 years of excellence in manufacturing noise and emission control solutions
- Compact modular designs providing ease of installations, less weight and less foot-print
- Responsive lead time for both standard and custom designs to meet your needs
- Customized engineered systems solutions to meet challenging integration and engine requirements

Contact Nett Technologies with your projects design requirements and specifications for optimized noise control solutions.

### OPTIONS

- Versatile connections including ANSI pattern flanges, NPT, slip-on, engine flange, schedule 40 and others
- Aluminized Steel, Stainless Steel 304 or 316 construction
- Horizontal or vertical mounting brackets and lifting lugs

### ACCESSORIES

- Hardware Kits
- Flexible connectors and expansion joints
- Elbows
- Thimbles
- Raincaps
- Thermal insulation: integrated or with thermal insulation blankets

Please see our accessories catalog for a complete listing.

### PRODUCT DIMENSIONS (in)

| Model*    | A      | D   | L1    | L2    | L3    | X   | X   | N      | O  |
|-----------|--------|-----|-------|-------|-------|-----|-----|--------|----|
|           | Outlet | Dia | EI-EO | SI-EO | SI-SO | Min | Max | Nipple | O  |
| NTSH-C1   | 1      | 10  | 48    | 46    | 44    | 5   | 9   | 2      | 7  |
| NTSH-C1.5 | 1.5    | 12  | 60    | 58    | 56    | 5   | 9   | 2      | 8  |
| NTSH-C2   | 2      | 12  | 64    | 61    | 58    | 5   | 10  | 3      | 9  |
| NTSH-C2.5 | 2.5    | 12  | 68    | 65    | 62    | 6   | 12  | 3      | 9  |
| NTSH-C3   | 3      | 14  | 70    | 67    | 64    | 7   | 13  | 3      | 10 |
| NTSH-C3.5 | 3.5    | 16  | 78    | 75    | 72    | 8   | 15  | 3      | 11 |
| NTSH-C4   | 4      | 20  | 82    | 79    | 76    | 8   | 17  | 3      | 13 |
| NTSH-C5   | 5      | 20  | 88    | 85    | 82    | 9   | 20  | 3      | 13 |
| NTSH-C6   | 6      | 24  | 100   | 96    | 92    | 10  | 23  | 4      | 16 |
| NTSH-C8   | 8      | 36  | 132   | 128   | 124   | 13  | 28  | 4      | 22 |
| NTSH-C10  | 10     | 36  | 140   | 136   | 132   | 14  | 32  | 4      | 22 |
| NTSH-C12  | 12     | 40  | 158   | 154   | 150   | 15  | 35  | 4      | 24 |
| NTSH-C14  | 14     | 42  | 174   | 169   | 164   | 18  | 37  | 5      | 26 |
| NTSH-C16  | 16     | 48  | 194   | 189   | 184   | 18  | 49  | 5      | 29 |
| NTSH-C18  | 18     | 50  | 205   | 200   | 195   | 21  | 52  | 5      | 30 |
| NTSH-C20  | 20     | 54  | 226   | 221   | 216   | 24  | 54  | 5      | 32 |
| NTSH-C22  | 22     | 54  | 228   | 223   | 218   | 26  | 57  | 5      | 32 |
| NTSH-C24  | 24     | 60  | 233   | 228   | 223   | 27  | 63  | 5      | 35 |

\* Other models and custom designs are available upon request. Dimensions subject to change without notice. All silencers are equipped with drain ports on inlet side. The silencer is all welded construction and coated with high heat black paint for maximum durability.

\*\* Standard inlet/outlet position.

# Residential Grade Silencers

## Disc Shape (20-25 dBA). Model NTRS-D

Nett Technologies' Residential Grade Silencers are designed to achieve maximum performance with the least amount of backpressure. These reactive silencers are typically used for reciprocating or positive displacement engines where noise level regulations are medium-low.

### FEATURES & BENEFITS

- Over 25 years of excellence in manufacturing noise and emission control solutions
- Compact modular designs providing ease of installations, less weight and less foot-print
- Responsive lead time for both standard and custom designs to meet your needs
- Customized engineered system solutions to meet challenging integration and engine requirements

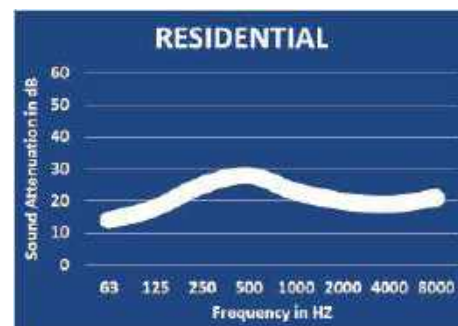
### OPTIONS

- Versatile connections including ANSI pattern flanges, NPT, slip-on, engine flange, schedule 40 and others
- Aluminized Steel, Stainless Steel 304 or 316 construction
- Two inlet configuration is available upon request

### ACCESSORIES

- Hardware Kits
- Flexible connectors and expansion joints
- Elbows
- Thimbles
- Raincaps
- Thermal insulation: integrated or with thermal insulation blankets

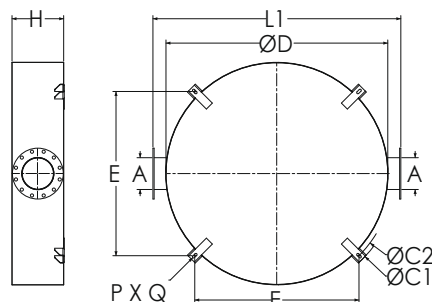
### TYPICAL ATTENUATION CURVE



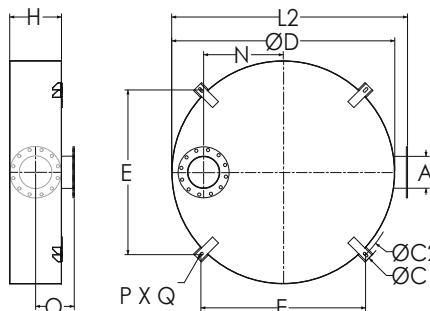
Please see our accessories catalog for a complete listing.

Contact Nett Technologies with your projects design requirements and specifications for optimized noise control solutions.

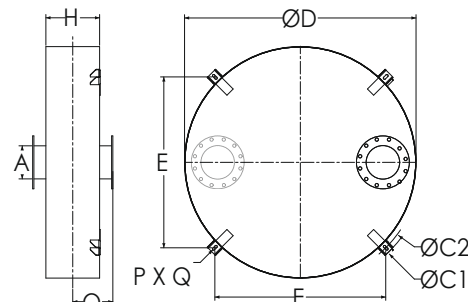
### TYPICAL CONFIGURATIONS



END IN END OUT (EI-EO)



BOTTOM IN END OUT (BI-EO)



BOTTOM IN TOP OUT (BI-TO)

### PRODUCT DIMENSIONS (in)

| Model*   | A      | D   | H      | L1    | L2    | O   | N     | E     | C1 | C2    | P        | Q      |
|----------|--------|-----|--------|-------|-------|-----|-------|-------|----|-------|----------|--------|
|          | Outlet | Dia | Height | EI-EO | BI-EO |     | Max   |       |    |       | Slot Dia | Slot L |
| NTRS-D4  | 4      | 22  | 7      | 30    | 26    | 7.5 | 5.5   | 17.13 | 29 | 24.25 | 0.625    | 1.375  |
| NTRS-D5  | 5      | 24  | 8      | 32    | 28    | 8   | 6     | 18.5  | 31 | 26.25 | 0.625    | 1.375  |
| NTRS-D6  | 6      | 28  | 10     | 36    | 32    | 9   | 7.5   | 21.38 | 35 | 30.25 | 0.625    | 1.375  |
| NTRS-D8  | 8      | 34  | 12     | 42    | 38    | 10  | 9.25  | 25.63 | 41 | 36.25 | 0.625    | 1.375  |
| NTRS-D10 | 10     | 38  | 14     | 46    | 42    | 11  | 10    | 29    | 46 | 41    | 0.75     | 1.75   |
| NTRS-D12 | 12     | 40  | 16     | 48    | 44    | 12  | 9.5   | 30.38 | 48 | 43    | 0.75     | 1.75   |
| NTRS-D14 | 14     | 42  | 18     | 50    | 46    | 13  | 9.5   | 31.88 | 50 | 45    | 0.75     | 1.75   |
| NTRS-D16 | 16     | 44  | 20     | 52    | 48    | 14  | 9.25  | 33.25 | 52 | 47    | 0.75     | 1.75   |
| NTRS-D18 | 18     | 60  | 26     | 68    | 64    | 17  | 16.5  | 45.25 | 69 | 64    | 1        | 2      |
| NTRS-D20 | 20     | 66  | 28     | 74    | 70    | 18  | 18.25 | 49.5  | 75 | 70    | 1        | 2      |

\* Other models and custom designs are available upon request. Dimensions subject to change without notice. All silencers are equipped with drain ports on inlet side. The silencer is all welded construction and coated with high heat black paint for maximum durability.



# Residential Grade Silencers

## Disc Shape with 1" Insulation (22-27 dBA). Model NTRS1-D

Nett Technologies' Residential Grade Silencers are designed to achieve maximum performance with the least amount of backpressure. These reactive/absorptive silencers are typically used for reciprocating or positive displacement engines where noise level regulations are medium-low.

### FEATURES & BENEFITS

- Over 25 years of excellence in manufacturing noise and emission control solutions
- Compact modular designs providing ease of installations, less weight and less foot-print
- Responsive lead time for both standard and custom designs to meet your needs
- Customized engineered system solutions to meet challenging integration and engine requirements

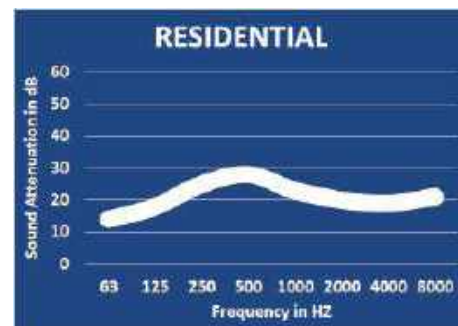
### OPTIONS

- Versatile connections including ANSI pattern flanges, NPT, slip-on, engine flange, schedule 40 and others
- Aluminized Steel, Stainless Steel 304 or 316 construction
- Two inlet configuration is available upon request

### ACCESSORIES

- Hardware Kits
- Flexible connectors and expansion joints
- Elbows
- Thimbles
- Raincaps
- Thermal insulation: integrated or with thermal insulation blankets

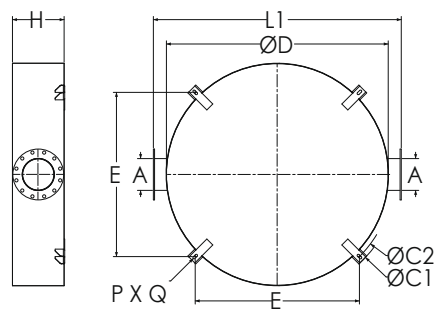
### TYPICAL ATTENUATION CURVE



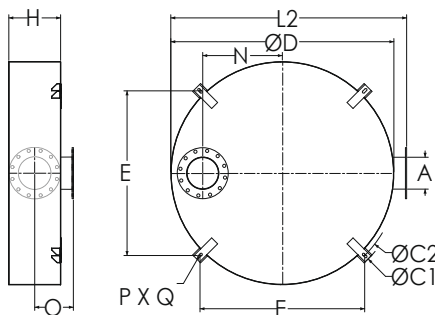
Please see our accessories catalog for a complete listing.

Contact Nett Technologies with your projects design requirements and specifications for optimized noise control solutions.

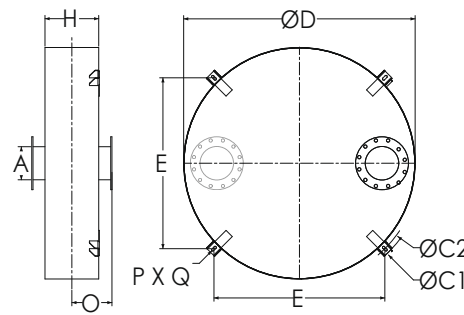
### TYPICAL CONFIGURATIONS



END IN END OUT (EI-EO)



BOTTOM IN END OUT (BI-EO)



BOTTOM IN TOP OUT (BI-TO)

### PRODUCT DIMENSIONS (in)

| Model*    | A      | D   | H      | L1    | L2    | O    | N     | E     | C1 | C2    | P        | Q      |
|-----------|--------|-----|--------|-------|-------|------|-------|-------|----|-------|----------|--------|
|           | Outlet | Dia | Height | EI-EO | BI-EO |      | Max   |       |    |       | Slot Dia | Slot L |
| NTRS1-D4  | 4      | 22  | 7      | 30    | 26    | 7.5  | 5.5   | 17.13 | 29 | 24.25 | 0.625    | 1.375  |
| NTRS1-D5  | 5      | 24  | 8      | 32    | 28    | 8    | 6     | 18.5  | 31 | 26.25 | 0.625    | 1.375  |
| NTRS1-D6  | 6      | 28  | 9      | 36    | 32    | 8.5  | 7.5   | 21.38 | 35 | 30.25 | 0.625    | 1.375  |
| NTRS1-D8  | 8      | 34  | 13     | 42    | 38    | 10.5 | 9.25  | 25.63 | 41 | 36.25 | 0.625    | 1.375  |
| NTRS1-D10 | 10     | 38  | 14     | 46    | 42    | 11   | 10    | 29    | 46 | 41    | 0.75     | 1.75   |
| NTRS1-D12 | 12     | 40  | 17     | 48    | 44    | 12.5 | 9.5   | 30.38 | 48 | 43    | 0.75     | 1.75   |
| NTRS1-D14 | 14     | 44  | 18     | 52    | 48    | 13   | 10.5  | 33.25 | 52 | 47    | 0.75     | 1.75   |
| NTRS1-D16 | 16     | 46  | 21     | 54    | 50    | 14.5 | 10.25 | 34.63 | 54 | 49    | 0.75     | 1.75   |
| NTRS1-D18 | 18     | 60  | 25     | 68    | 64    | 16.5 | 16.5  | 45.25 | 69 | 64    | 1        | 2      |
| NTRS1-D20 | 20     | 66  | 30     | 74    | 70    | 19   | 18.25 | 49.5  | 75 | 70    | 1        | 2      |

\* This 1" internally insulated model provides a great reduction in the outer surface temperature. Other models and custom designs are available upon request. Dimensions subject to change without notice. All silencers are equipped with drain ports on inlet side. The silencer is all welded construction and coated with high heat black paint for maximum durability.

# Residential Grade Silencers

## Disc Shape with 2" Insulation (24-29 dBA). Model NTRS2-D

Nett Technologies' Residential Grade Silencers are designed to achieve maximum performance with the least amount of backpressure. These reactive/absorptive silencers are typically used for reciprocating or positive displacement engines where noise level regulations are medium-low.

### FEATURES & BENEFITS

- Over 25 years of excellence in manufacturing noise and emission control solutions
- Compact modular designs providing ease of installations, less weight and less foot-print
- Responsive lead time for both standard and custom designs to meet your needs
- Customized engineered system solutions to meet challenging integration and engine requirements

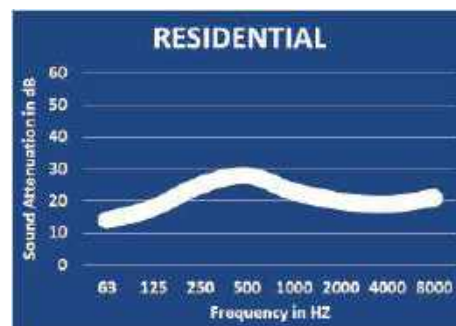
### OPTIONS

- Versatile connections including ANSI pattern flanges, NPT, slip-on, engine flange, schedule 40 and others
- Aluminized Steel, Stainless Steel 304 or 316 construction
- Two inlet configuration is available upon request

### ACCESSORIES

- Hardware Kits
- Flexible connectors and expansion joints
- Elbows
- Thimbles
- Raincaps
- Thermal insulation: integrated or with thermal insulation blankets

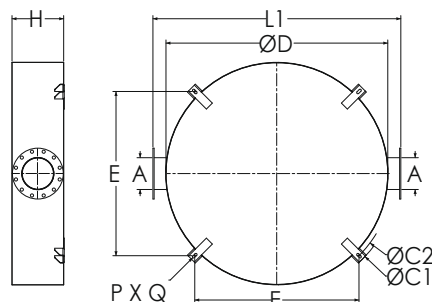
### TYPICAL ATTENUATION CURVE



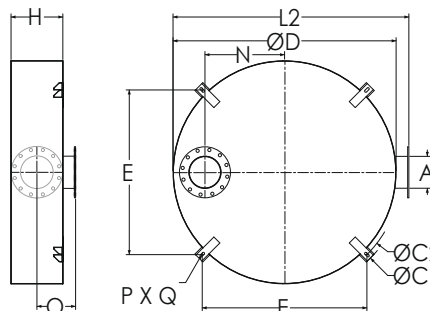
Please see our accessories catalog for a complete listing.

Contact Nett Technologies with your projects design requirements and specifications for optimized noise control solutions.

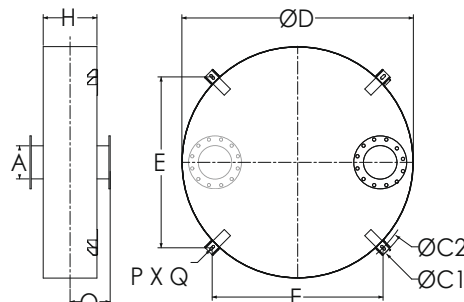
### TYPICAL CONFIGURATIONS



END IN END OUT (EI-EO)



BOTTOM IN END OUT (BI-EO)



BOTTOM IN TOP OUT (BI-TO)

### PRODUCT DIMENSIONS (in)

| Model*    | A      | D   | H      | L1    | L2    | O    | N     | E     | C1 | C2    | P        | Q      |
|-----------|--------|-----|--------|-------|-------|------|-------|-------|----|-------|----------|--------|
|           | Outlet | Dia | Height | EI-EO | BI-EO |      | Max   |       |    |       | Slot Dia | Slot L |
| NTRS2-D4  | 4      | 22  | 7      | 30    | 26    | 7.5  | 5.5   | 17.13 | 29 | 24.25 | 0.625    | 1.375  |
| NTRS2-D5  | 5      | 24  | 8      | 32    | 28    | 8    | 6     | 18.5  | 31 | 26.25 | 0.625    | 1.375  |
| NTRS2-D6  | 6      | 28  | 9      | 36    | 32    | 8.5  | 7.5   | 21.38 | 35 | 30.25 | 0.625    | 1.375  |
| NTRS2-D8  | 8      | 34  | 13     | 42    | 38    | 10.5 | 9.25  | 25.63 | 41 | 36.25 | 0.625    | 1.375  |
| NTRS2-D10 | 10     | 38  | 14     | 46    | 42    | 11   | 10    | 29    | 46 | 41    | 0.75     | 1.75   |
| NTRS2-D12 | 12     | 40  | 17     | 48    | 44    | 12.5 | 9.5   | 30.38 | 48 | 43    | 0.75     | 1.75   |
| NTRS2-D14 | 14     | 44  | 18     | 52    | 48    | 13   | 10.5  | 33.25 | 52 | 47    | 0.75     | 1.75   |
| NTRS2-D16 | 16     | 46  | 21     | 54    | 50    | 14.5 | 10.25 | 34.63 | 54 | 49    | 0.75     | 1.75   |
| NTRS2-D18 | 18     | 60  | 25     | 68    | 64    | 16.5 | 16.5  | 45.25 | 69 | 64    | 1        | 2      |
| NTRS2-D20 | 20     | 66  | 30     | 74    | 70    | 19   | 18.25 | 49.5  | 75 | 70    | 1        | 2      |

\* This 2" internally insulated model provides a great reduction in the outer surface temperature. Other models and custom designs are available upon request. Dimensions subject to change without notice. All silencers are equipped with drain ports on inlet side. The silencer is all welded construction and coated with high heat black paint for maximum durability.

# Critical Grade Silencers

## Disc Shape (25-30 dBA). Model NTCR-D

Nett Technologies' Critical Grade Silencers are designed to achieve maximum performance with the least amount of backpressure. These reactive silencers are typically used for reciprocating or positive displacement engines where noise level regulations are medium.

### FEATURES & BENEFITS

- Over 25 years of excellence in manufacturing noise and emission control solutions
- Compact modular designs providing ease of installations, less weight and less foot-print
- Responsive lead time for both standard and custom designs to meet your needs
- Customized engineered system solutions to meet challenging integration and engine requirements

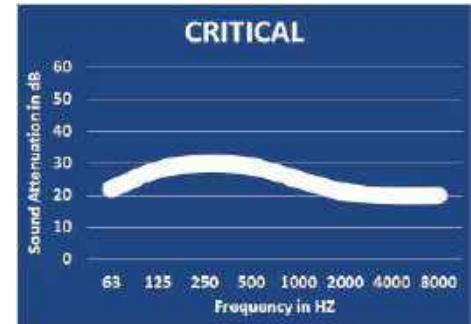
### OPTIONS

- Versatile connections including ANSI pattern flanges, NPT, slip-on, engine flange, schedule 40 and others
- Aluminized Steel, Stainless Steel 304 or 316 construction
- Two inlet configuration is available upon request

### ACCESSORIES

- Hardware Kits
- Flexible connectors and expansion joints
- Elbows
- Thimbles
- Raincaps
- Thermal insulation: integrated or with thermal insulation blankets

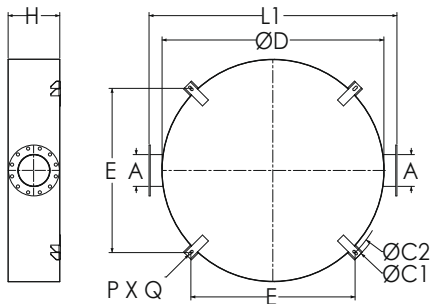
### TYPICAL ATTENUATION CURVE



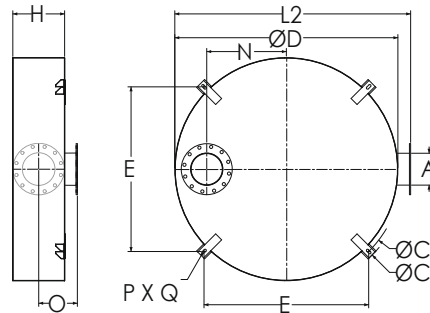
Please see our accessories catalog for a complete listing.

Contact Nett Technologies with your projects design requirements and specifications for optimized noise control solutions.

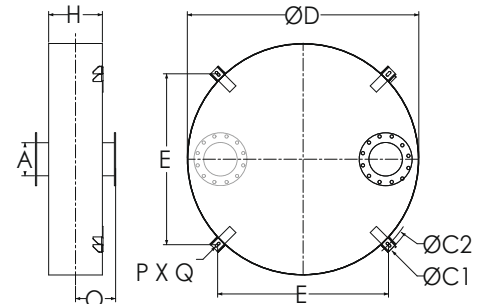
### TYPICAL CONFIGURATIONS



END IN END OUT (EI-EO)



BOTTOM IN END OUT (BI-EO)



BOTTOM IN TOP OUT (BI-TO)

### PRODUCT DIMENSIONS (in)

| Model*   | A      | D   | H      | L1    | L2    | O    | N     | E     | C1 | C2    | P        | Q      |
|----------|--------|-----|--------|-------|-------|------|-------|-------|----|-------|----------|--------|
|          | Outlet | Dia | Height | EI-EO | BI-EO |      | Max   |       |    |       | Slot Dia | Slot L |
| NTCR-D4  | 4      | 22  | 7      | 30    | 26    | 7.5  | 5.5   | 17.13 | 29 | 24.25 | 0.625    | 1.375  |
| NTCR-D5  | 5      | 24  | 8      | 32    | 28    | 8    | 6     | 18.5  | 31 | 26.25 | 0.625    | 1.375  |
| NTCR-D6  | 6      | 28  | 9      | 36    | 32    | 8.5  | 7.5   | 21.38 | 35 | 30.25 | 0.625    | 1.375  |
| NTCR-D8  | 8      | 34  | 11     | 42    | 38    | 9.5  | 9.25  | 25.63 | 41 | 36.25 | 0.625    | 1.375  |
| NTCR-D10 | 10     | 38  | 13     | 46    | 42    | 10.5 | 10    | 29    | 46 | 41    | 0.75     | 1.75   |
| NTCR-D12 | 12     | 40  | 16     | 48    | 44    | 12   | 9.5   | 30.38 | 48 | 43    | 0.75     | 1.75   |
| NTCR-D14 | 14     | 44  | 20     | 52    | 48    | 14   | 10.5  | 33.25 | 52 | 47    | 0.75     | 1.75   |
| NTCR-D16 | 16     | 46  | 20     | 54    | 50    | 14   | 10.25 | 34.63 | 54 | 49    | 0.75     | 1.75   |
| NTCR-D18 | 18     | 60  | 24     | 68    | 64    | 16   | 16.5  | 45.25 | 69 | 64    | 1        | 2      |
| NTCR-D20 | 20     | 66  | 28     | 74    | 70    | 18   | 18.25 | 49.5  | 75 | 70    | 1        | 2      |

\* Other models and custom designs are available upon request. Dimensions subject to change without notice. All silencers are equipped with drain ports on inlet side. The silencer is all welded construction and coated with high heat black paint for maximum durability.

# Critical Grade Silencers

## Disc Shape with 1" Insulation (27-32 dBA). Model NTCR1-D

Nett Technologies' Critical Grade Silencers are designed to achieve maximum performance with the least amount of backpressure. These reactive/absorptive silencers are typically used for reciprocating or positive displacement engines where noise level regulations are medium.

### FEATURES & BENEFITS

- Over 25 years of excellence in manufacturing noise and emission control solutions
- Compact modular designs providing ease of installations, less weight and less foot-print
- Responsive lead time for both standard and custom designs to meet your needs
- Customized engineered system solutions to meet challenging integration and engine requirements

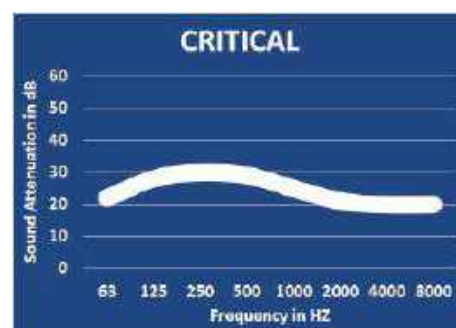
### OPTIONS

- Versatile connections including ANSI pattern flanges, NPT, slip-on, engine flange, schedule 40 and others
- Aluminized Steel, Stainless Steel 304 or 316 construction
- Two inlet configuration is available upon request

### ACCESSORIES

- Hardware Kits
- Flexible connectors and expansion joints
- Elbows
- Thimbles
- Raincaps
- Thermal insulation: integrated or with thermal insulation blankets

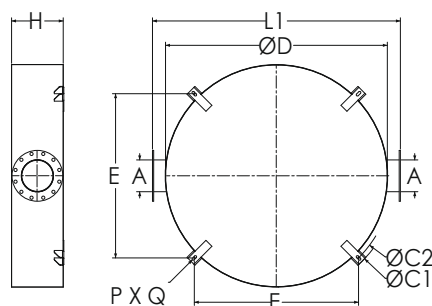
### TYPICAL ATTENUATION CURVE



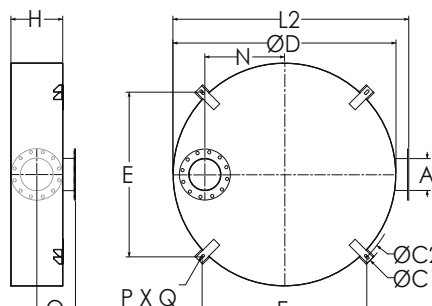
Please see our accessories catalog for a complete listing.

Contact Nett Technologies with your projects design requirements and specifications for optimized noise control solutions.

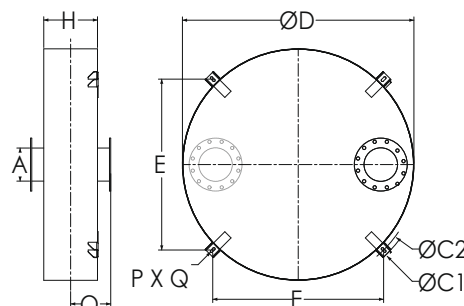
### TYPICAL CONFIGURATIONS



END IN END OUT (EI-EO)



BOTTOM IN END OUT (BI-EO)



BOTTOM IN TOP OUT (BI-TO)

### PRODUCT DIMENSIONS (in)

| Model*    | A      | D   | H      | L1    | L2    | O    | N     | E     | C1 | C2    | P        | Q      |
|-----------|--------|-----|--------|-------|-------|------|-------|-------|----|-------|----------|--------|
|           | Outlet | Dia | Height | EI-EO | BI-EO |      | Max   |       |    |       | Slot Dia | Slot L |
| NTCR1-D4  | 4      | 24  | 7      | 32    | 28    | 7.5  | 6.5   | 18.5  | 31 | 26.25 | 0.625    | 1.375  |
| NTCR1-D5  | 5      | 26  | 9      | 34    | 30    | 8.5  | 7     | 28.25 | 44 | 40    | 0.625    | 1.375  |
| NTCR1-D6  | 6      | 30  | 10     | 38    | 34    | 9    | 8.5   | 22.75 | 37 | 32.25 | 0.625    | 1.375  |
| NTCR1-D8  | 8      | 34  | 12     | 42    | 38    | 10   | 9.25  | 25.63 | 41 | 36.25 | 0.625    | 1.375  |
| NTCR1-D10 | 10     | 40  | 14     | 48    | 44    | 11   | 11    | 30.38 | 48 | 43    | 0.75     | 1.75   |
| NTCR1-D12 | 12     | 42  | 17     | 50    | 46    | 12.5 | 10.5  | 31.88 | 50 | 45    | 0.75     | 1.75   |
| NTCR1-D14 | 14     | 44  | 20     | 52    | 48    | 14   | 10.5  | 33.25 | 52 | 47    | 0.75     | 1.75   |
| NTCR1-D16 | 16     | 54  | 23     | 62    | 58    | 15.5 | 14.25 | 40.25 | 62 | 57    | 0.75     | 1.75   |
| NTCR1-D18 | 18     | 60  | 25     | 68    | 64    | 16.5 | 16.5  | 45.25 | 69 | 64    | 1        | 2      |
| NTCR1-D20 | 20     | 66  | 30     | 74    | 70    | 19   | 18.25 | 49.5  | 75 | 70    | 1        | 2      |

\* This 1" internally insulated model provides a great reduction in the outer surface temperature. Other models and custom designs are available upon request. Dimensions subject to change without notice. All silencers are equipped with drain ports on inlet side. The silencer is all welded construction and coated with high heat black paint for maximum durability.

# Critical Grade Silencers

## Disc Shape with 2" Insulation (29-34 dBA). Model NTCR2-D

Nett Technologies' Critical Grade Silencers are designed to achieve maximum performance with the least amount of backpressure. These reactive/absorptive silencers are typically used for reciprocating or positive displacement engines where noise level regulations are medium.

### FEATURES & BENEFITS

- Over 25 years of excellence in manufacturing noise and emission control solutions
- Compact modular designs providing ease of installations, less weight and less foot-print
- Responsive lead time for both standard and custom designs to meet your needs
- Customized engineered system solutions to meet challenging integration and engine requirements

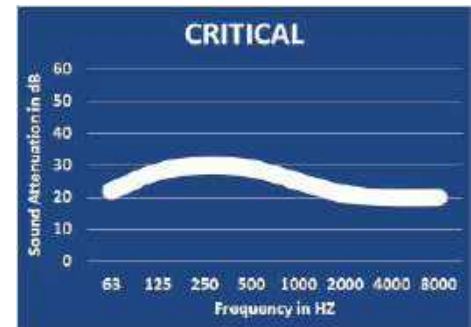
### OPTIONS

- Versatile connections including ANSI pattern flanges, NPT, slip-on, engine flange, schedule 40 and others
- Aluminized Steel, Stainless Steel 304 or 316 construction
- Two inlet configuration is available upon request

### ACCESSORIES

- Hardware Kits
- Flexible connectors and expansion joints
- Elbows
- Thimbles
- Raincaps
- Thermal insulation: integrated or with thermal insulation blankets

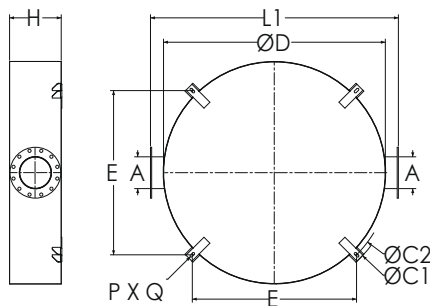
### TYPICAL ATTENUATION CURVE



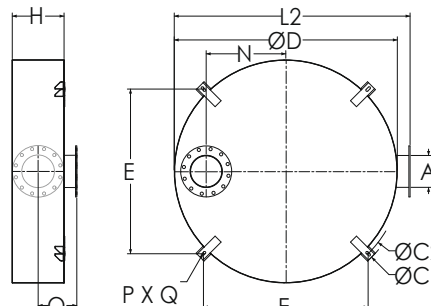
Please see our accessories catalog for a complete listing.

Contact Nett Technologies with your projects design requirements and specifications for optimized noise control solutions.

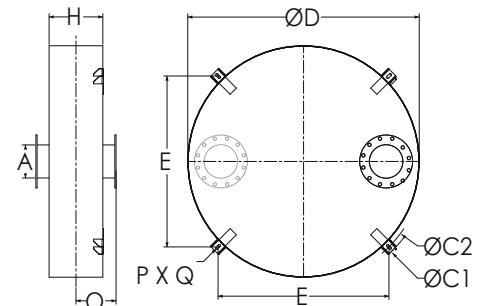
### TYPICAL CONFIGURATIONS



END IN END OUT (EI-EO)



BOTTOM IN END OUT (BI-EO)



BOTTOM IN TOP OUT (BI-TO)

### PRODUCT DIMENSIONS (in)

| Model*    | A      | D   | H      | L1    | L2    | O    | N     | E     | C1 | C2    | P        | Q      |
|-----------|--------|-----|--------|-------|-------|------|-------|-------|----|-------|----------|--------|
|           | Outlet | Dia | Height | EI-EO | BI-EO |      | Max   |       |    |       | Slot Dia | Slot L |
| NTCR2-D4  | 4      | 24  | 8      | 32    | 28    | 8    | 6.5   | 18.5  | 31 | 26.25 | 0.625    | 1.375  |
| NTCR2-D5  | 5      | 26  | 10     | 34    | 30    | 9    | 7     | 28.25 | 44 | 40    | 0.625    | 1.375  |
| NTCR2-D6  | 6      | 30  | 12     | 38    | 34    | 10   | 8.5   | 22.75 | 37 | 32.25 | 0.625    | 1.375  |
| NTCR2-D8  | 8      | 34  | 14     | 42    | 38    | 11   | 9.25  | 25.63 | 41 | 36.25 | 0.625    | 1.375  |
| NTCR2-D10 | 10     | 40  | 16     | 48    | 44    | 12   | 11    | 30.38 | 48 | 43    | 0.75     | 1.75   |
| NTCR2-D12 | 12     | 42  | 18     | 50    | 46    | 13   | 10.5  | 31.88 | 50 | 45    | 0.75     | 1.75   |
| NTCR2-D14 | 14     | 44  | 23     | 52    | 48    | 15.5 | 10.5  | 33.25 | 52 | 47    | 0.75     | 1.75   |
| NTCR2-D16 | 16     | 54  | 24     | 62    | 58    | 16   | 14.25 | 40.25 | 62 | 57    | 0.75     | 1.75   |
| NTCR2-D18 | 18     | 60  | 26     | 68    | 64    | 17   | 16.5  | 45.25 | 69 | 64    | 1        | 2      |
| NTCR2-D20 | 20     | 66  | 30     | 74    | 70    | 19   | 18.25 | 49.5  | 75 | 70    | 1        | 2      |

\* This 2" internally insulated model provides a great reduction in the outer surface temperature. Other models and custom designs are available upon request. Dimensions subject to change without notice. All silencers are equipped with drain ports on inlet side. The silencer is all welded construction and coated with high heat black paint for maximum durability.



# Super Critical Grade Silencers

## Disc Shape (30-37 dBA). Model NTSC-D

Nett Technologies' Super Critical Grade Silencers are designed to achieve maximum performance with the least amount of backpressure. These reactive silencers are typically used for reciprocating or positive displacement engines where noise level regulations are medium-high.

### FEATURES & BENEFITS

- Over 25 years of excellence in manufacturing noise and emission control solutions
- Compact modular designs providing ease of installations, less weight and less foot-print
- Responsive lead time for both standard and custom designs to meet your needs
- Customized engineered system solutions to meet challenging integration and engine requirements

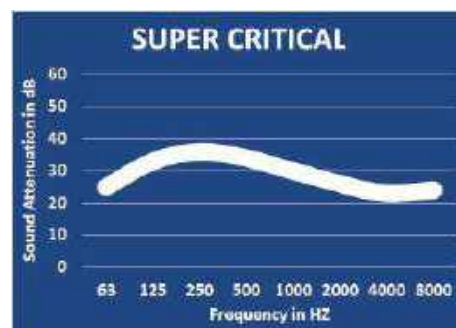
### OPTIONS

- Versatile connections including ANSI pattern flanges, NPT, slip-on, engine flange, schedule 40 and others
- Aluminized Steel, Stainless Steel 304 or 316 construction
- Two inlet configuration is available upon request

### ACCESSORIES

- Hardware Kits
- Flexible connectors and expansion joints
- Elbows
- Thimbles
- Raincaps
- Thermal insulation: integrated or with thermal insulation blankets

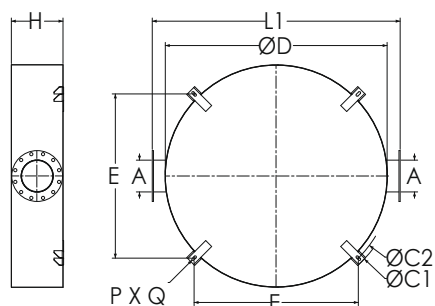
### TYPICAL ATTENUATION CURVE



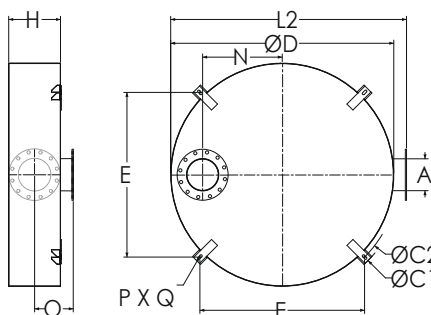
Please see our accessories catalog for a complete listing.

Contact Nett Technologies with your projects design requirements and specifications for optimized noise control solutions.

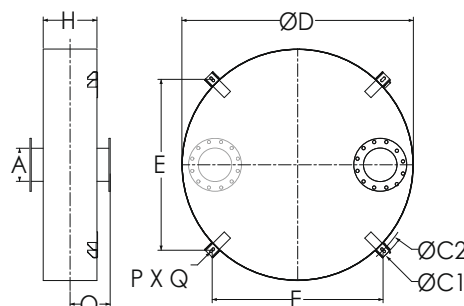
### TYPICAL CONFIGURATIONS



END IN END OUT (EI-EO)



BOTTOM IN END OUT (BI-EO)



BOTTOM IN TOP OUT (BI-TO)

### PRODUCT DIMENSIONS (in)

| Model*   | A      | D   | H      | L1    | L2    | O    | N     | E     | C1 | C2    | P        | Q      |
|----------|--------|-----|--------|-------|-------|------|-------|-------|----|-------|----------|--------|
|          | Outlet | Dia | Height | EI-EO | BI-EO |      | Max   |       |    |       | Slot Dia | Slot L |
| NTSC-D4  | 4      | 24  | 7      | 32    | 28    | 7.5  | 6.5   | 18.5  | 31 | 26.25 | 0.625    | 1.375  |
| NTSC-D5  | 5      | 26  | 8      | 34    | 30    | 8    | 7     | 28.25 | 44 | 40    | 0.625    | 1.375  |
| NTSC-D6  | 6      | 30  | 10     | 38    | 34    | 9    | 8.5   | 22.75 | 37 | 32.25 | 0.625    | 1.375  |
| NTSC-D8  | 8      | 34  | 12     | 42    | 38    | 10   | 9.25  | 25.63 | 41 | 36.25 | 0.625    | 1.375  |
| NTSC-D10 | 10     | 40  | 14     | 48    | 44    | 11   | 11    | 30.38 | 48 | 43    | 0.75     | 1.75   |
| NTSC-D12 | 12     | 42  | 16     | 50    | 46    | 12   | 10.5  | 31.88 | 50 | 45    | 0.75     | 1.75   |
| NTSC-D14 | 14     | 44  | 22     | 52    | 48    | 15   | 10.5  | 33.25 | 52 | 47    | 0.75     | 1.75   |
| NTSC-D16 | 16     | 54  | 25     | 62    | 58    | 16.5 | 14.25 | 40.25 | 62 | 57    | 0.75     | 1.75   |
| NTSC-D18 | 18     | 60  | 28     | 68    | 64    | 18   | 16.5  | 45.25 | 69 | 64    | 1        | 2      |
| NTSC-D20 | 20     | 66  | 32     | 74    | 70    | 20   | 18.25 | 49.5  | 75 | 70    | 1        | 2      |

\* Other models and custom designs are available upon request. Dimensions subject to change without notice. All silencers are equipped with drain ports on inlet side. The silencer is all welded construction and coated with high heat black paint for maximum durability.

# Super Critical Grade Silencers

## Disc Shape with 1" Insulation (32-39 dBA). Model NTSC1-D

Nett Technologies' Super Critical Grade Silencers are designed to achieve maximum performance with the least amount of backpressure. These reactive/absorptive silencers are typically used for reciprocating or positive displacement engines where noise level regulations are medium-high.

### FEATURES & BENEFITS

- Over 25 years of excellence in manufacturing noise and emission control solutions
- Compact modular designs providing ease of installations, less weight and less foot-print
- Responsive lead time for both standard and custom designs to meet your needs
- Customized engineered system solutions to meet challenging integration and engine requirements

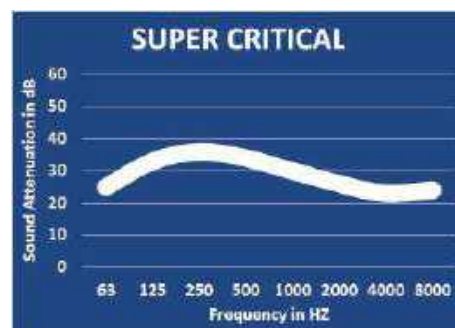
### OPTIONS

- Versatile connections including ANSI pattern flanges, NPT, slip-on, engine flange, schedule 40 and others
- Aluminized Steel, Stainless Steel 304 or 316 construction
- Two inlet configuration is available upon request

### ACCESSORIES

- Hardware Kits
- Flexible connectors and expansion joints
- Elbows
- Thimbles
- Raincaps
- Thermal insulation: integrated or with thermal insulation blankets

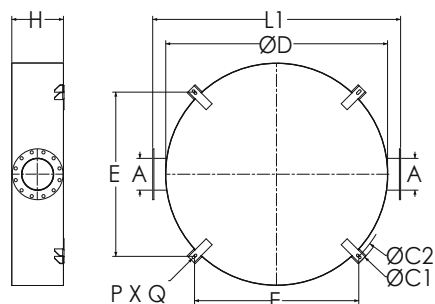
### TYPICAL ATTENUATION CURVE



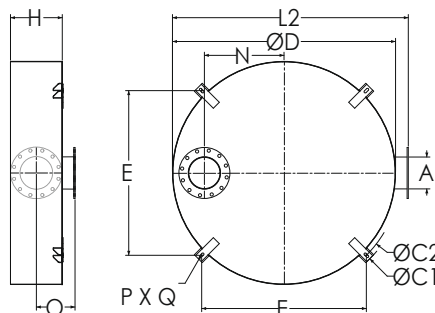
Please see our accessories catalog for a complete listing.

Contact Nett Technologies with your projects design requirements and specifications for optimized noise control solutions.

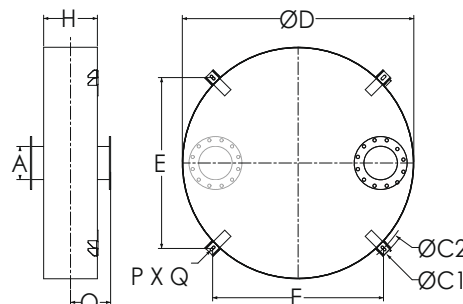
### TYPICAL CONFIGURATIONS



END IN END OUT (EI-EO)



BOTTOM IN END OUT (BI-EO)



BOTTOM IN TOP OUT (BI-TO)

### PRODUCT DIMENSIONS (in)

| Model*    | A      | D   | H      | L1    | L2    | O    | N     | E     | C1 | C2    | P        | Q      |
|-----------|--------|-----|--------|-------|-------|------|-------|-------|----|-------|----------|--------|
|           | Outlet | Dia | Height | EI-EO | BI-EO |      | Max   |       |    |       | Slot Dia | Slot L |
| NTSC1-D4  | 4      | 26  | 7      | 34    | 30    | 7.5  | 7.5   | 28.25 | 44 | 40    | 0.625    | 1.375  |
| NTSC1-D5  | 5      | 28  | 8      | 36    | 32    | 8    | 8     | 21.38 | 35 | 30.25 | 0.625    | 1.375  |
| NTSC1-D6  | 6      | 30  | 10     | 38    | 34    | 9    | 8.5   | 22.75 | 37 | 32.25 | 0.625    | 1.375  |
| NTSC1-D8  | 8      | 34  | 12     | 42    | 38    | 10   | 9.25  | 25.63 | 41 | 36.25 | 0.625    | 1.375  |
| NTSC1-D10 | 10     | 42  | 14     | 50    | 46    | 11   | 12    | 31.88 | 50 | 45    | 0.75     | 1.75   |
| NTSC1-D12 | 12     | 44  | 16     | 52    | 48    | 12   | 11.5  | 33.25 | 52 | 47    | 0.75     | 1.75   |
| NTSC1-D14 | 14     | 54  | 22     | 62    | 58    | 15   | 15.5  | 40.25 | 62 | 57    | 0.75     | 1.75   |
| NTSC1-D16 | 16     | 54  | 25     | 62    | 58    | 16.5 | 14.25 | 40.25 | 62 | 57    | 0.75     | 1.75   |
| NTSC1-D18 | 18     | 60  | 28     | 68    | 64    | 18   | 16.5  | 45.25 | 69 | 64    | 1        | 2      |
| NTSC1-D20 | 20     | 66  | 32     | 74    | 70    | 20   | 18.25 | 49.5  | 75 | 70    | 1        | 2      |

\* This 1" internally insulated model provides a great reduction in the outer surface temperature. Other models and custom designs are available upon request. Dimensions subject to change without notice. All silencers are equipped with drain ports on inlet side. The silencer is all welded construction and coated with high heat black paint for maximum durability.

# Super Critical Grade Silencers

## Disc Shape with 2" Insulation (34-41 dBA). Model NTSC2-D

Nett Technologies' Super Critical Grade Silencers are designed to achieve maximum performance with the least amount of backpressure. These reactive/absorptive silencers are typically used for reciprocating or positive displacement engines where noise level regulations are medium-high.

### FEATURES & BENEFITS

- Over 25 years of excellence in manufacturing noise and emission control solutions
- Compact modular designs providing ease of installations, less weight and less foot-print
- Responsive lead time for both standard and custom designs to meet your needs
- Customized engineered system solutions to meet challenging integration and engine requirements

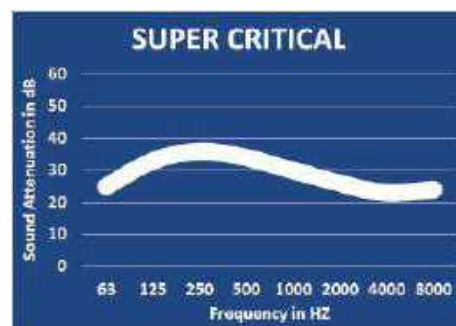
### OPTIONS

- Versatile connections including ANSI pattern flanges, NPT, slip-on, engine flange, schedule 40 and others
- Aluminized Steel, Stainless Steel 304 or 316 construction
- Two inlet configuration is available upon request

### ACCESSORIES

- Hardware Kits
- Flexible connectors and expansion joints
- Elbows
- Thimbles
- Raincaps
- Thermal insulation: integrated or with thermal insulation blankets

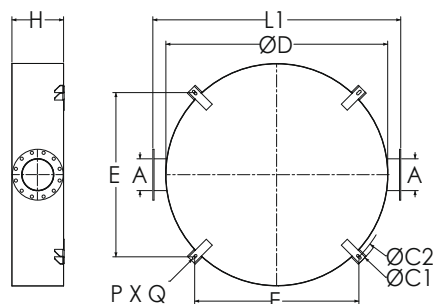
### TYPICAL ATTENUATION CURVE



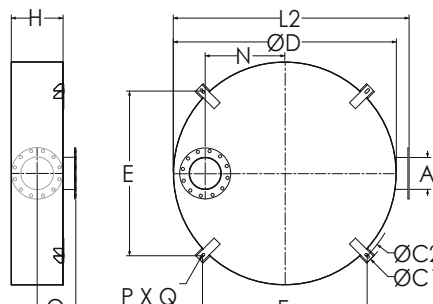
Please see our accessories catalog for a complete listing.

Contact Nett Technologies with your projects design requirements and specifications for optimized noise control solutions.

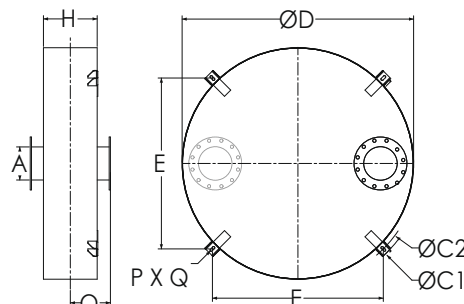
### TYPICAL CONFIGURATIONS



END IN END OUT (EI-EO)



BOTTOM IN END OUT (BI-EO)



BOTTOM IN TOP OUT (BI-TO)

### PRODUCT DIMENSIONS (in)

| Model*    | A      | D   | H      | L1    | L2    | O    | N     | E     | C1 | C2    | P        | Q      |
|-----------|--------|-----|--------|-------|-------|------|-------|-------|----|-------|----------|--------|
|           | Outlet | Dia | Height | EI-EO | BI-EO |      | Max   |       |    |       | Slot Dia | Slot L |
| NTSC2-D4  | 4      | 26  | 9      | 34    | 30    | 8.5  | 7.5   | 28.25 | 44 | 40    | 0.625    | 1.375  |
| NTSC2-D5  | 5      | 28  | 11     | 36    | 32    | 9.5  | 8     | 21.38 | 35 | 30.25 | 0.625    | 1.375  |
| NTSC2-D6  | 6      | 30  | 13     | 38    | 34    | 10.5 | 8.5   | 22.75 | 37 | 32.25 | 0.625    | 1.375  |
| NTSC2-D8  | 8      | 34  | 15     | 42    | 38    | 11.5 | 9.25  | 25.63 | 41 | 36.25 | 0.625    | 1.375  |
| NTSC2-D10 | 10     | 42  | 18     | 50    | 46    | 13   | 12    | 31.88 | 50 | 45    | 0.75     | 1.75   |
| NTSC2-D12 | 12     | 44  | 19     | 52    | 48    | 13.5 | 11.5  | 33.25 | 52 | 47    | 0.75     | 1.75   |
| NTSC2-D14 | 14     | 54  | 25     | 62    | 58    | 16.5 | 15.5  | 40.25 | 62 | 57    | 0.75     | 1.75   |
| NTSC2-D16 | 16     | 54  | 26     | 62    | 58    | 17   | 14.25 | 40.25 | 62 | 57    | 0.75     | 1.75   |
| NTSC2-D18 | 18     | 60  | 30     | 68    | 64    | 19   | 16.5  | 45.25 | 69 | 64    | 1        | 2      |
| NTSC2-D20 | 20     | 66  | 32     | 74    | 70    | 20   | 18.25 | 49.5  | 75 | 70    | 1        | 2      |

\* This 2" internally insulated model provides a great reduction in the outer surface temperature. Other models and custom designs are available upon request. Dimensions subject to change without notice. All silencers are equipped with drain ports on inlet side. The silencer is all welded construction and coated with high heat black paint for maximum durability.

# Hospital Grade Silencers

## Disc Shape with 1" Insulation (35-40 dBA). Model NTH01-D

Nett Technologies' Hospital Grade Silencers are designed to achieve maximum performance with the least amount of backpressure. These reactive/absorptive silencers are typically used for reciprocating or positive displacement engines where noise level regulations are high.

### FEATURES & BENEFITS

- Over 25 years of excellence in manufacturing noise and emission control solutions
- Compact modular designs providing ease of installations, less weight and less foot-print
- Responsive lead time for both standard and custom designs to meet your needs
- Customized engineered system solutions to meet challenging integration and engine requirements

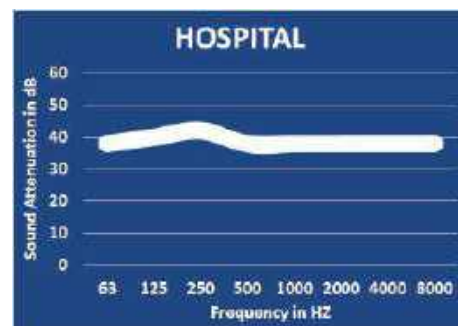
### OPTIONS

- Versatile connections including ANSI pattern flanges, NPT, slip-on, engine flange, schedule 40 and others
- Aluminized Steel, Stainless Steel 304 or 316 construction
- Two inlet configuration is available upon request

### ACCESSORIES

- Hardware Kits
- Flexible connectors and expansion joints
- Elbows
- Thimbles
- Raincaps
- Thermal insulation: integrated or with thermal insulation blankets

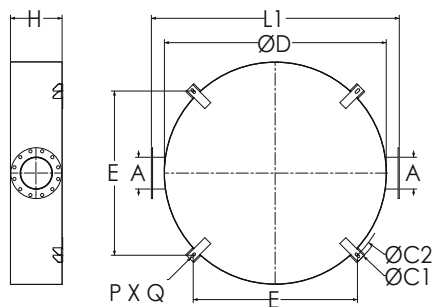
### TYPICAL ATTENUATION CURVE



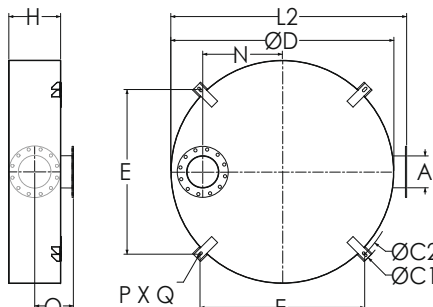
Please see our accessories catalog for a complete listing.

Contact Nett Technologies with your projects design requirements and specifications for optimized noise control solutions.

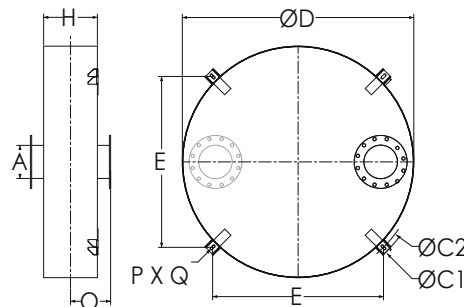
### TYPICAL CONFIGURATIONS



END IN END OUT (EI-EO)



BOTTOM IN END OUT (BI-EO)



BOTTOM IN TOP OUT (BI-TO)

### PRODUCT DIMENSIONS (in)

| Model*    | A      | D   | H      | L1    | L2    | O   | N     | E     | C1 | C2    | P        | Q      |
|-----------|--------|-----|--------|-------|-------|-----|-------|-------|----|-------|----------|--------|
|           | Outlet | Dia | Height | EI-EO | BI-EO |     | Max   |       |    |       | Slot Dia | Slot L |
| NTH01-D4  | 4      | 26  | 10     | 34    | 30    | 9   | 7.5   | 28.25 | 44 | 40    | 0.625    | 1.375  |
| NTH01-D5  | 5      | 28  | 11     | 36    | 32    | 9.5 | 8     | 21.38 | 35 | 30.25 | 0.625    | 1.375  |
| NTH01-D6  | 6      | 30  | 12     | 38    | 34    | 10  | 8.5   | 22.75 | 37 | 32.25 | 0.625    | 1.375  |
| NTH01-D8  | 8      | 34  | 16     | 42    | 38    | 12  | 9.25  | 25.63 | 41 | 36.25 | 0.625    | 1.375  |
| NTH01-D10 | 10     | 42  | 18     | 50    | 46    | 13  | 12    | 31.88 | 50 | 45    | 0.75     | 1.75   |
| NTH01-D12 | 12     | 44  | 22     | 52    | 48    | 15  | 11.5  | 33.25 | 52 | 47    | 0.75     | 1.75   |
| NTH01-D14 | 14     | 54  | 26     | 62    | 58    | 17  | 15.5  | 40.25 | 62 | 57    | 0.75     | 1.75   |
| NTH01-D16 | 16     | 54  | 28     | 62    | 58    | 18  | 14.25 | 40.25 | 62 | 57    | 0.75     | 1.75   |
| NTH01-D18 | 18     | 60  | 32     | 68    | 64    | 20  | 16.5  | 45.25 | 69 | 64    | 1        | 2      |
| NTH01-D20 | 20     | 66  | 36     | 74    | 70    | 22  | 18.25 | 49.50 | 75 | 70    | 1        | 2      |

\* This 1" internally insulated model provides a great reduction in the outer surface temperature. Other models and custom designs are available upon request. Dimensions subject to change without notice. All silencers are equipped with drain ports on inlet side. The silencer is all welded construction and coated with high heat black paint for maximum durability.

# Hospital Grade Silencers

## Disc Shape with 2" Insulation (37-42 dBA). Model NTH02-D

Nett Technologies' Hospital Grade Silencers are designed to achieve maximum performance with the least amount of backpressure. These reactive/absorptive silencers are typically used for reciprocating or positive displacement engines where noise level regulations are high.

### FEATURES & BENEFITS

- Over 25 years of excellence in manufacturing noise and emission control solutions
- Compact modular designs providing ease of installations, less weight and less foot-print
- Responsive lead time for both standard and custom designs to meet your needs
- Customized engineered system solutions to meet challenging integration and engine requirements

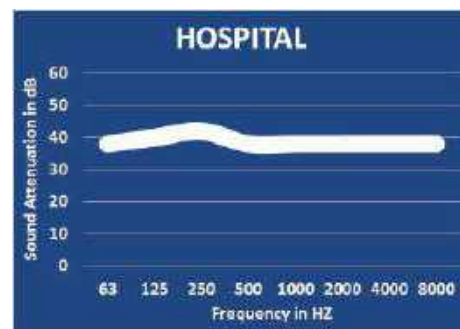
### OPTIONS

- Versatile connections including ANSI pattern flanges, NPT, slip-on, engine flange, schedule 40 and others
- Aluminized Steel, Stainless Steel 304 or 316 construction
- Two inlet configuration is available upon request

### ACCESSORIES

- Hardware Kits
- Flexible connectors and expansion joints
- Elbows
- Thimbles
- Raincaps
- Thermal insulation: integrated or with thermal insulation blankets

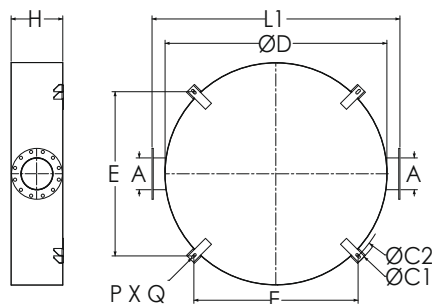
### TYPICAL ATTENUATION CURVE



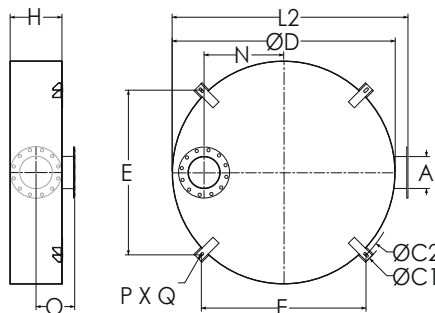
Please see our accessories catalog for a complete listing.

Contact Nett Technologies with your projects design requirements and specifications for optimized noise control solutions.

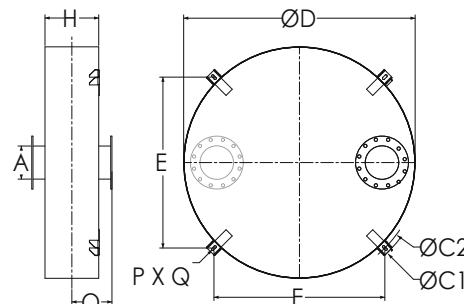
### TYPICAL CONFIGURATIONS



END IN END OUT (EI-EO)



BOTTOM IN END OUT (BI-EO)



BOTTOM IN TOP OUT (BI-TO)

### PRODUCT DIMENSIONS (in)

| Model*    | A      | D   | H      | L1    | L2    | O  | N     | E     | C1 | C2    | P        | Q      |
|-----------|--------|-----|--------|-------|-------|----|-------|-------|----|-------|----------|--------|
|           | Outlet | Dia | Height | EI-EO | BI-EO |    | Max   |       |    |       | Slot Dia | Slot L |
| NTH02-D4  | 4      | 28  | 12     | 36    | 32    | 10 | 8.5   | 21.38 | 35 | 30.25 | 0.625    | 1.375  |
| NTH02-D5  | 5      | 30  | 14     | 38    | 34    | 11 | 9     | 22.75 | 37 | 32.25 | 0.625    | 1.375  |
| NTH02-D6  | 6      | 34  | 14     | 42    | 38    | 11 | 10.5  | 25.63 | 41 | 36.25 | 0.625    | 1.375  |
| NTH02-D8  | 8      | 38  | 18     | 46    | 42    | 13 | 11.25 | 29    | 46 | 41    | 0.75     | 1.75   |
| NTH02-D10 | 10     | 44  | 20     | 52    | 48    | 14 | 13    | 33.25 | 52 | 47    | 0.75     | 1.75   |
| NTH02-D12 | 12     | 46  | 24     | 54    | 50    | 16 | 12.5  | 34.63 | 54 | 49    | 0.75     | 1.75   |
| NTH02-D14 | 14     | 54  | 26     | 62    | 58    | 17 | 15.5  | 40.25 | 62 | 57    | 0.75     | 1.75   |
| NTH02-D16 | 16     | 60  | 28     | 68    | 64    | 18 | 17.25 | 45.25 | 69 | 64    | 1        | 2      |
| NTH02-D18 | 18     | 66  | 32     | 74    | 70    | 20 | 19.5  | 49.50 | 75 | 70    | 1        | 2      |
| NTH02-D20 | 20     | 70  | 42     | 74    | 74    | 25 | 20.25 | 52    | 79 | 74    | 1        | 2      |

\* This 2" internally insulated model provides a great reduction in the outer surface temperature. Other models and custom designs are available upon request. Dimensions subject to change without notice. All silencers are equipped with drain ports on inlet side. The silencer is all welded construction and coated with high heat black paint for maximum durability.



# Hospital Plus Grade Silencers

## Disc Shape with 2" Insulation (42-52 dBA). Model NTHP2-D

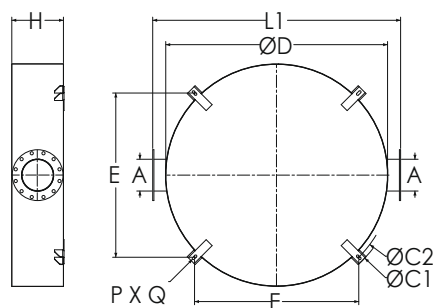
Nett Technologies' Hospital Plus Grade Silencers are designed to achieve maximum performance with the least amount of backpressure.

These reactive/absorptive silencers are used for reciprocating or positive displacement engines where noise level regulations are critically-high.

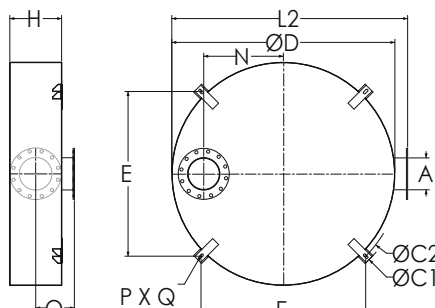
### FEATURES & BENEFITS

- Over 25 years of excellence in manufacturing noise and emission control solutions
- Compact modular designs providing ease of installations, less weight and less foot-print
- Responsive lead time for both standard and custom designs to meet your needs
- Customized engineered system solutions to meet challenging integration and engine requirements

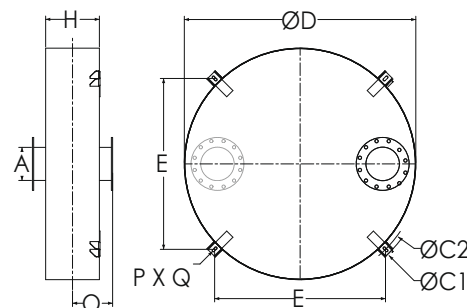
### TYPICAL CONFIGURATIONS



END IN END OUT (EI-EO)



BOTTOM IN END OUT (BI-EO)



BOTTOM IN TOP OUT (BI-TO)

### PRODUCT DIMENSIONS (in)

| Model*    | A      | D   | H      | L1    | L2    | O  | N     | E     | C1 | C2    | P        | Q      |
|-----------|--------|-----|--------|-------|-------|----|-------|-------|----|-------|----------|--------|
|           | Outlet | Dia | Height | EI-EO | BI-EO |    | Max   |       |    |       | Slot Dia | Slot L |
| NTHP2-D4  | 4      | 32  | 16     | 40    | 36    | 12 | 10.5  | 24.30 | 39 | 34.25 | 0.625    | 1.375  |
| NTHP2-D5  | 5      | 34  | 18     | 42    | 38    | 13 | 11    | 25.70 | 41 | 36.25 | 0.625    | 1.375  |
| NTHP2-D6  | 6      | 38  | 18     | 46    | 42    | 13 | 12.5  | 28.50 | 47 | 40.25 | 0.625    | 1.375  |
| NTHP2-D8  | 8      | 42  | 22     | 50    | 46    | 15 | 13.25 | 31.90 | 50 | 45    | 0.75     | 1.75   |
| NTHP2-D10 | 10     | 48  | 24     | 56    | 52    | 16 | 15    | 36.10 | 56 | 51    | 0.75     | 1.75   |
| NTHP2-D12 | 12     | 50  | 28     | 58    | 54    | 18 | 14.5  | 37.50 | 58 | 53    | 0.75     | 1.75   |
| NTHP2-D14 | 14     | 58  | 30     | 66    | 62    | 19 | 17.5  | 43.20 | 66 | 61    | 0.75     | 1.75   |
| NTHP2-D16 | 16     | 64  | 32     | 72    | 68    | 20 | 19.25 | 48.10 | 75 | 68    | 1        | 2      |
| NTHP2-D18 | 18     | 70  | 36     | 78    | 74    | 22 | 21.5  | 52.40 | 79 | 74    | 1        | 2      |
| NTHP2-D20 | 20     | 74  | 46     | 82    | 78    | 27 | 22.25 | 55.20 | 83 | 78    | 1        | 2      |

\* This 2" internally insulated model provides a great reduction in the outer surface temperature. Other models and custom designs are available upon request. Dimensions subject to change without notice. All silencers are equipped with drain ports on inlet side. The silencer is all welded construction and coated with high heat black paint for maximum durability.

\*\* Standard inlet/outlet position.

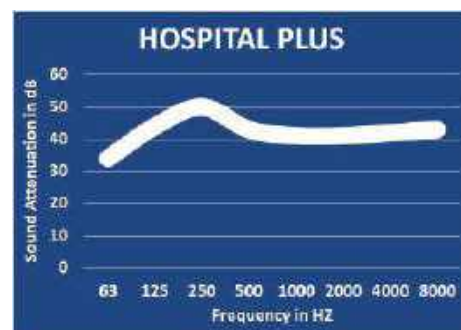
### OPTIONS

- Versatile connections including ANSI pattern flanges, NPT, slip-on, engine flange, schedule 40 and others
- Aluminized Steel, Stainless Steel 304 or 316 construction
- Two inlet configuration is available upon request

### ACCESSORIES

- Hardware Kits
- Flexible connectors and expansion joints
- Elbows
- Thimbles
- Raincaps
- Thermal insulation: integrated or with thermal insulation blankets

### TYPICAL ATTENUATION CURVE



Please see our accessories catalog for a complete listing.

Contact Nett Technologies with your projects design requirements and specifications for optimized noise control solutions.

# Residential Grade Silencers

## Rectangular Shape (20-25 dBA). Model NTRS-R

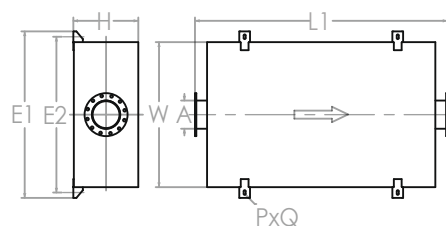
Nett Technologies' Residential Grade Silencers are designed to achieve maximum performance with the least amount of backpressure.

These reactive silencers are used for reciprocating or positive displacement engines where noise level regulations are medium-low.

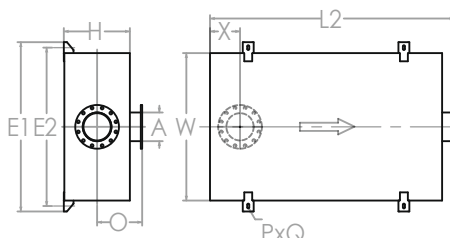
### FEATURES & BENEFITS

- Over 25 years of excellence in manufacturing noise and emission control solutions
- Compact modular designs providing ease of installations, less weight and less foot-print
- Responsive lead time for both standard and custom designs to meet your needs
- Customized engineered system solutions to meet challenging integration and engine requirements

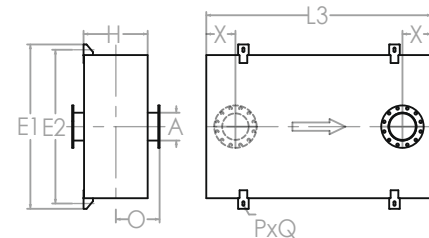
### TYPICAL CONFIGURATIONS



END IN END OUT (EI-EO)



BOTTOM IN END OUT (BI-EO)



BOTTOM IN TOP OUT (BI-TO)

### PRODUCT DIMENSIONS (in)

| Model*   | A      | W     | H      | L1    | L2    | L3    | O | X**  | X   | E1 | E2    | P        | Q      |
|----------|--------|-------|--------|-------|-------|-------|---|------|-----|----|-------|----------|--------|
|          | Outlet | Width | Height | EI-EO | BI-EO | BI-TO |   | Min  | Max |    |       | Slot Dia | Slot L |
| NTRS-R4  | 4      | 22    | 6      | 28    | 24    | 20    | 4 | 4.5  | 9   | 29 | 25    | 0.75     | 1.75   |
| NTRS-R5  | 5      | 24    | 8      | 32    | 28    | 24    | 4 | 5    | 11  | 31 | 27    | 0.75     | 1.75   |
| NTRS-R6  | 6      | 26    | 8      | 34    | 30    | 26    | 4 | 5.5  | 12  | 33 | 29    | 0.75     | 1.75   |
| NTRS-R8  | 8      | 32    | 10     | 40    | 36    | 32    | 4 | 6.5  | 15  | 39 | 35    | 0.75     | 1.75   |
| NTRS-R10 | 10     | 40    | 12     | 48    | 44    | 40    | 4 | 7.5  | 19  | 47 | 43    | 0.75     | 1.75   |
| NTRS-R12 | 12     | 46    | 14     | 54    | 50    | 46    | 4 | 8.5  | 22  | 53 | 49    | 0.75     | 1.75   |
| NTRS-R14 | 14     | 54    | 18     | 58    | 54    | 50    | 4 | 9.5  | 24  | 62 | 58    | 1        | 2      |
| NTRS-R16 | 16     | 60    | 20     | 68    | 64    | 60    | 4 | 10.5 | 29  | 68 | 64    | 1        | 2      |
| NTRS-R18 | 18     | 70    | 22     | 74    | 70    | 66    | 4 | 11.5 | 32  | 78 | 74    | 1        | 2      |
| NTRS-R20 | 20     | 72    | 24     | 80    | 76    | 72    | 4 | 12.5 | 35  | 80 | 76    | 1        | 2      |
| NTRS-R22 | 22     | 86    | 26     | 84    | 80    | 76    | 4 | 13.5 | 37  | 96 | 90.75 | 1.25     | 2.25   |
| NTRS-R24 | 24     | 88    | 28     | 88    | 84    | 80    | 4 | 14.5 | 39  | 98 | 92.75 | 1.25     | 2.25   |

\* Other models and custom designs are available upon request. Dimensions subject to change without notice. All silencers are equipped with drain ports on inlet side. The silencer is all welded construction and coated with high heat black paint for maximum durability.

\*\* Standard inlet/outlet position.

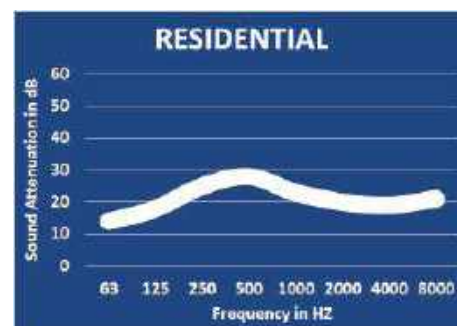
### OPTIONS

- Versatile connections including ANSI pattern flanges, NPT, slip-on, engine flange, schedule 40 and others
- Aluminized Steel, Stainless Steel 304 or 316 construction
- Two inlet configuration is available upon request

### ACCESSORIES

- Hardware Kits
- Flexible connectors and expansion joints
- Elbows
- Thimbles
- Raincaps
- Thermal insulation: integrated or with thermal insulation blankets

### TYPICAL ATTENUATION CURVE



Please see our accessories catalog for a complete listing.

Contact Nett Technologies with your projects design requirements and specifications for optimized noise control solutions.

# Residential Grade Silencers

## Rectangular Shape with 1" Insulation (22-27 dBA). Model NTRS1-R

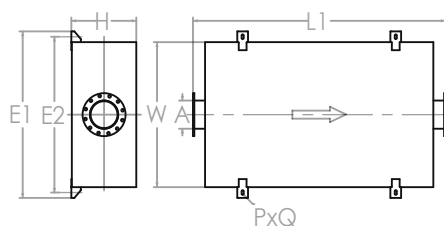
Nett Technologies' Residential Grade Silencers are designed to achieve maximum performance with the least amount of backpressure.

These reactive/absorptive silencers are used for reciprocating or positive displacement engines where noise level regulations are medium-low.

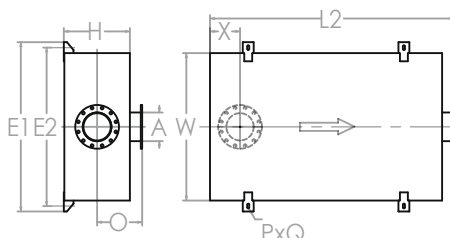
### FEATURES & BENEFITS

- Over 25 years of excellence in manufacturing noise and emission control solutions
- Compact modular designs providing ease of installations, less weight and less foot-print
- Responsive lead time for both standard and custom designs to meet your needs
- Customized engineered system solutions to meet challenging integration and engine requirements

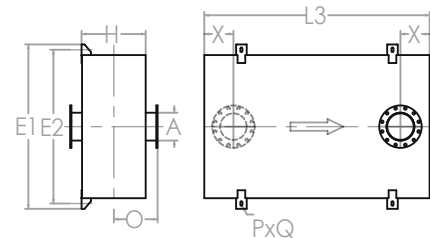
### TYPICAL CONFIGURATIONS



END IN END OUT (EI-EO)



BOTTOM IN END OUT (BI-EO)



BOTTOM IN TOP OUT (BI-TO)

### PRODUCT DIMENSIONS (in)

| Model*      | A      | W     | H      | L1    | L2    | L3    | O | X**  | X   | E1  | E2    | P        | Q      |
|-------------|--------|-------|--------|-------|-------|-------|---|------|-----|-----|-------|----------|--------|
|             | Outlet | Width | Height | EI-EO | BI-EO | BI-TO |   | Min  | Max |     |       | Slot Dia | Slot L |
| NTRS-T1-R4  | 4      | 26    | 8      | 30    | 26    | 22    | 4 | 4.5  | 10  | 33  | 29    | 0.75     | 1.75   |
| NTRS-T1-R5  | 5      | 28    | 10     | 34    | 30    | 26    | 4 | 5    | 12  | 35  | 31    | 0.75     | 1.75   |
| NTRS-T1-R6  | 6      | 34    | 10     | 36    | 32    | 28    | 4 | 5.5  | 13  | 41  | 37    | 0.75     | 1.75   |
| NTRS-T1-R8  | 8      | 42    | 12     | 48    | 44    | 40    | 4 | 6.5  | 19  | 49  | 45    | 0.75     | 1.75   |
| NTRS-T1-R10 | 10     | 48    | 14     | 56    | 52    | 48    | 4 | 7.5  | 23  | 56  | 52    | 1        | 2      |
| NTRS-T1-R12 | 12     | 56    | 16     | 68    | 64    | 60    | 4 | 8.5  | 29  | 64  | 60    | 1        | 2      |
| NTRS-T1-R14 | 14     | 62    | 20     | 74    | 70    | 66    | 4 | 9.5  | 32  | 70  | 66    | 1        | 2      |
| NTRS-T1-R16 | 16     | 70    | 22     | 80    | 76    | 72    | 4 | 10.5 | 35  | 78  | 74    | 1        | 2      |
| NTRS-T1-R18 | 18     | 74    | 24     | 84    | 80    | 76    | 4 | 11.5 | 37  | 82  | 78    | 1        | 2      |
| NTRS-T1-R20 | 20     | 88    | 26     | 92    | 88    | 84    | 4 | 12.5 | 41  | 98  | 92.75 | 1.25     | 2.25   |
| NTRS-T1-R22 | 22     | 90    | 28     | 94    | 90    | 86    | 4 | 13.5 | 42  | 100 | 94.75 | 1.25     | 2.25   |
| NTRS-T1-R24 | 24     | 92    | 30     | 96    | 92    | 88    | 4 | 14.5 | 43  | 102 | 96.75 | 1.25     | 2.25   |

\* This 1" internally insulated model provides a great reduction in the outer surface temperature. Other models and custom designs are available upon request. Dimensions subject to change without notice. All silencers are equipped with drain ports on inlet side. The silencer is all welded construction and coated with high heat black paint for maximum durability.

\*\* Standard inlet/outlet position.

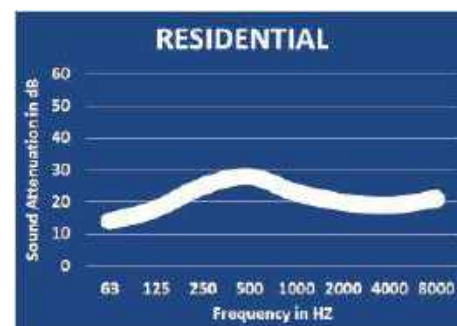
### OPTIONS

- Versatile connections including ANSI pattern flanges, NPT, slip-on, engine flange, schedule 40 and others
- Aluminized Steel, Stainless Steel 304 or 316 construction
- Two inlet configuration is available upon request

### ACCESSORIES

- Hardware Kits
- Flexible connectors and expansion joints
- Elbows
- Thimbles
- Raincaps
- Thermal insulation: integrated or with thermal insulation blankets

### TYPICAL ATTENUATION CURVE



Please see our accessories catalog for a complete listing.

Contact Nett Technologies with your projects design requirements and specifications for optimized noise control solutions.

# Residential Grade Silencers

## Rectangular Shape with 2" Insulation (24-29 dBA). Model NTRS2-R

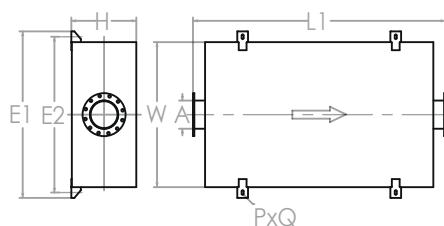
Nett Technologies' Residential Grade Silencers are designed to achieve maximum performance with the least amount of backpressure.

These reactive/absorptive silencers are used for reciprocating or positive displacement engines where noise level regulations are medium-low.

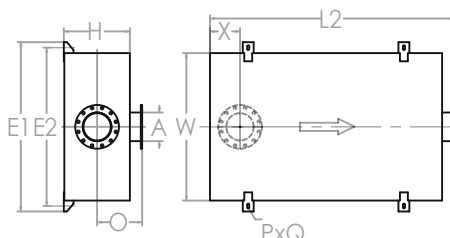
### FEATURES & BENEFITS

- Over 25 years of excellence in manufacturing noise and emission control solutions
- Compact modular designs providing ease of installations, less weight and less foot-print
- Responsive lead time for both standard and custom designs to meet your needs
- Customized engineered system solutions to meet challenging integration and engine requirements

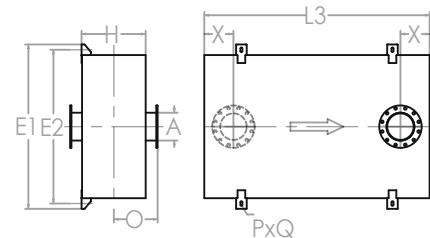
### TYPICAL CONFIGURATIONS



END IN END OUT (EI-EO)



BOTTOM IN END OUT (BI-EO)



BOTTOM IN TOP OUT (BI-TO)

### PRODUCT DIMENSIONS (in)

| Model*      | A      | W     | H      | L1    | L2    | L3    | O | X**  | X   | E1  | E2    | P        | Q      |
|-------------|--------|-------|--------|-------|-------|-------|---|------|-----|-----|-------|----------|--------|
|             | Outlet | Width | Height | EI-EO | BI-EO | BI-TO |   | Min  | Max |     |       | Slot Dia | Slot L |
| NTRS-T2-R4  | 4      | 26    | 8      | 30    | 26    | 22    | 4 | 4.5  | 10  | 33  | 29    | 0.75     | 1.75   |
| NTRS-T2-R5  | 5      | 28    | 10     | 34    | 30    | 26    | 4 | 5    | 12  | 35  | 31    | 0.75     | 1.75   |
| NTRS-T2-R6  | 6      | 34    | 10     | 36    | 32    | 28    | 4 | 5.5  | 13  | 41  | 37    | 0.75     | 1.75   |
| NTRS-T2-R8  | 8      | 42    | 12     | 48    | 44    | 40    | 4 | 6.5  | 19  | 49  | 45    | 0.75     | 1.75   |
| NTRS-T2-R10 | 10     | 48    | 14     | 56    | 52    | 48    | 4 | 7.5  | 23  | 56  | 52    | 1        | 2      |
| NTRS-T2-R12 | 12     | 56    | 16     | 68    | 64    | 60    | 4 | 8.5  | 29  | 64  | 60    | 1        | 2      |
| NTRS-T2-R14 | 14     | 62    | 20     | 74    | 70    | 66    | 4 | 9.5  | 32  | 70  | 66    | 1        | 2      |
| NTRS-T2-R16 | 16     | 70    | 22     | 80    | 76    | 72    | 4 | 10.5 | 35  | 78  | 74    | 1        | 2      |
| NTRS-T2-R18 | 18     | 74    | 24     | 84    | 80    | 76    | 4 | 11.5 | 37  | 82  | 78    | 1        | 2      |
| NTRS-T2-R20 | 20     | 88    | 26     | 92    | 88    | 84    | 4 | 12.5 | 41  | 98  | 92.75 | 1.25     | 2.25   |
| NTRS-T2-R22 | 22     | 90    | 28     | 94    | 90    | 86    | 4 | 13.5 | 42  | 100 | 94.75 | 1.25     | 2.25   |
| NTRS-T2-R24 | 24     | 92    | 30     | 96    | 92    | 88    | 4 | 14.5 | 43  | 102 | 96.75 | 1.25     | 2.25   |

\* This 2" internally insulated model provides a great reduction in the outer surface temperature. Other models and custom designs are available upon request. Dimensions subject to change without notice. All silencers are equipped with drain ports on inlet side. The silencer is all welded construction and coated with high heat black paint for maximum durability.

\*\* Standard inlet/outlet position.

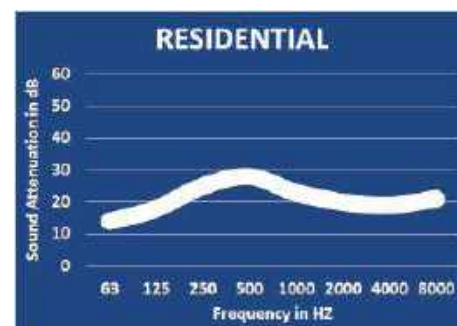
### OPTIONS

- Versatile connections including ANSI pattern flanges, NPT, slip-on, engine flange, schedule 40 and others
- Aluminized Steel, Stainless Steel 304 or 316 construction
- Two inlet configuration is available upon request

### ACCESSORIES

- Hardware Kits
- Flexible connectors and expansion joints
- Elbows
- Thimbles
- Raincaps
- Thermal insulation: integrated or with thermal insulation blankets

### TYPICAL ATTENUATION CURVE



Please see our accessories catalog for a complete listing.

Contact Nett Technologies with your projects design requirements and specifications for optimized noise control solutions.

# Critical Grade Silencers

## Rectangular Shape (25-30 dBA). Model NTCR-R

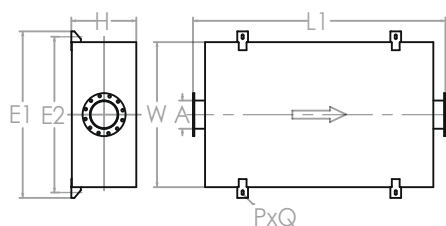
Nett Technologies' Critical Grade Silencers are designed to achieve maximum performance with the least amount of backpressure.

These reactive silencers are used for reciprocating or positive displacement engines where noise level regulations are medium.

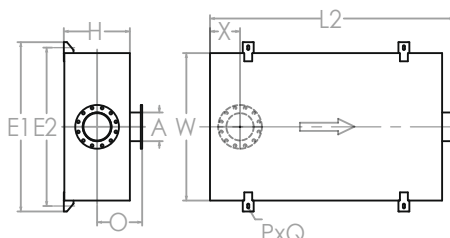
### FEATURES & BENEFITS

- Over 25 years of excellence in manufacturing noise and emission control solutions
- Compact modular designs providing ease of installations, less weight and less foot-print
- Responsive lead time for both standard and custom designs to meet your needs
- Customized engineered system solutions to meet challenging integration and engine requirements

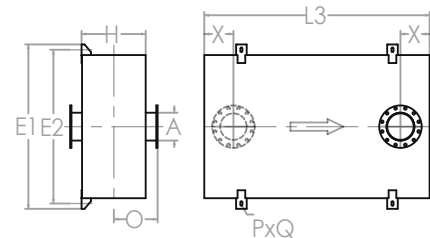
### TYPICAL CONFIGURATIONS



END IN END OUT (EI-EO)



BOTTOM IN END OUT (BI-EO)



BOTTOM IN TOP OUT (BI-TO)

### PRODUCT DIMENSIONS (in)

| Model*   | A      | W     | H      | L1    | L2    | L3    | O | X**  | X   | E1  | E2    | P        | Q      |
|----------|--------|-------|--------|-------|-------|-------|---|------|-----|-----|-------|----------|--------|
|          | Outlet | Width | Height | EI-EO | BI-EO | BI-TO |   | Min  | Max |     |       | Slot Dia | Slot L |
| NTCR-R4  | 4      | 26    | 8      | 30    | 26    | 22    | 4 | 4.5  | 10  | 33  | 29    | 0.75     | 1.75   |
| NTCR-R5  | 5      | 28    | 10     | 34    | 30    | 26    | 4 | 5    | 12  | 35  | 31    | 0.75     | 1.75   |
| NTCR-R6  | 6      | 34    | 10     | 36    | 32    | 28    | 4 | 5.5  | 13  | 41  | 37    | 0.75     | 1.75   |
| NTCR-R8  | 8      | 42    | 12     | 48    | 44    | 40    | 4 | 6.5  | 19  | 49  | 45    | 0.75     | 1.75   |
| NTCR-R10 | 10     | 48    | 14     | 56    | 52    | 48    | 4 | 7.5  | 23  | 56  | 52    | 1        | 2      |
| NTCR-R12 | 12     | 56    | 16     | 68    | 64    | 60    | 4 | 8.5  | 29  | 64  | 60    | 1        | 2      |
| NTCR-R14 | 14     | 62    | 20     | 74    | 70    | 66    | 4 | 9.5  | 32  | 70  | 66    | 1        | 2      |
| NTCR-R16 | 16     | 70    | 22     | 80    | 76    | 72    | 4 | 10.5 | 35  | 78  | 74    | 1        | 2      |
| NTCR-R18 | 18     | 74    | 24     | 84    | 80    | 76    | 4 | 11.5 | 37  | 82  | 78    | 1        | 2      |
| NTCR-R20 | 20     | 88    | 26     | 92    | 88    | 84    | 4 | 12.5 | 41  | 98  | 92.75 | 1.25     | 2.25   |
| NTCR-R22 | 22     | 90    | 28     | 94    | 90    | 86    | 4 | 13.5 | 42  | 100 | 94.75 | 1.25     | 2.25   |
| NTCR-R24 | 24     | 92    | 30     | 96    | 92    | 88    | 4 | 14.5 | 43  | 102 | 96.75 | 1.25     | 2.25   |

\* Other models and custom designs are available upon request. Dimensions subject to change without notice. All silencers are equipped with drain ports on inlet side. The silencer is all welded construction and coated with high heat black paint for maximum durability.

\*\* Standard inlet/outlet position.

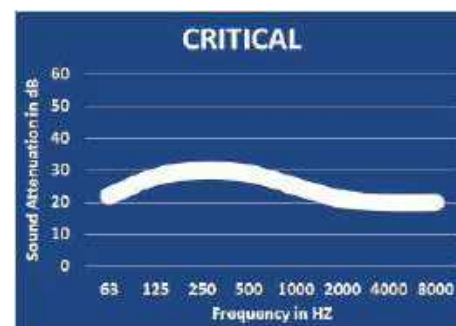
### OPTIONS

- Versatile connections including ANSI pattern flanges, NPT, slip-on, engine flange, schedule 40 and others
- Aluminized Steel, Stainless Steel 304 or 316 construction
- Two inlet configuration is available upon request

### ACCESSORIES

- Hardware Kits
- Flexible connectors and expansion joints
- Elbows
- Thimbles
- Raincaps
- Thermal insulation: integrated or with thermal insulation blankets

### TYPICAL ATTENUATION CURVE



Please see our accessories catalog for a complete listing.

Contact Nett Technologies with your projects design requirements and specifications for optimized noise control solutions.



# Critical Grade Silencers

## Rectangular Shape with 1" Insulation (27-32 dBA). Model NTCR1-R

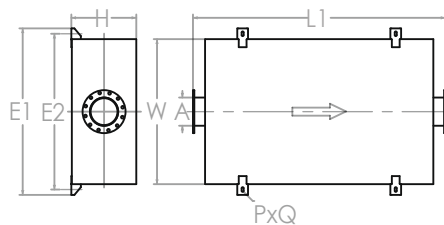
Nett Technologies' Critical Grade Silencers are designed to achieve maximum performance with the least amount of backpressure.

These reactive/absorptive silencers are used for reciprocating or positive displacement engines where noise level regulations are medium.

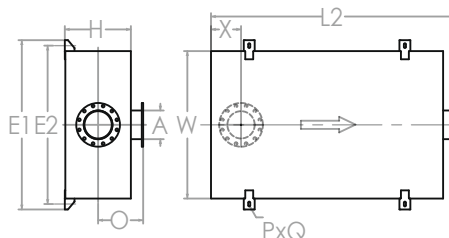
### FEATURES & BENEFITS

- Over 25 years of excellence in manufacturing noise and emission control solutions
- Compact modular designs providing ease of installations, less weight and less foot-print
- Responsive lead time for both standard and custom designs to meet your needs
- Customized engineered system solutions to meet challenging integration and engine requirements

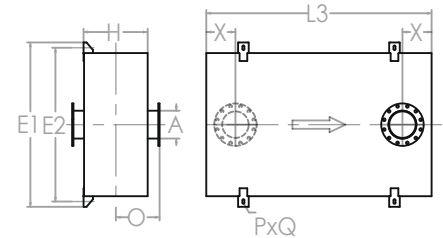
### TYPICAL CONFIGURATIONS



END IN END OUT (EI-EO)



BOTTOM IN END OUT (BI-EO)



BOTTOM IN TOP OUT (BI-TO)

### PRODUCT DIMENSIONS (in)

| Model*      | A      | W     | H      | L1    | L2    | L3    | O | X**  | X   | E1  | E2    | P        | Q      |
|-------------|--------|-------|--------|-------|-------|-------|---|------|-----|-----|-------|----------|--------|
|             | Outlet | Width | Height | EI-EO | BI-EO | BI-TO |   | Min  | Max |     |       | Slot Dia | Slot L |
| NTCR-T1-R4  | 4      | 28    | 8      | 32    | 28    | 24    | 4 | 4.5  | 11  | 35  | 31    | 0.75     | 1.75   |
| NTCR-T1-R5  | 5      | 30    | 10     | 36    | 32    | 28    | 4 | 5    | 13  | 37  | 33    | 0.75     | 1.75   |
| NTCR-T1-R6  | 6      | 36    | 10     | 38    | 34    | 30    | 4 | 5.5  | 14  | 43  | 39    | 0.75     | 1.75   |
| NTCR-T1-R8  | 8      | 44    | 12     | 50    | 46    | 42    | 4 | 6.5  | 20  | 51  | 47    | 0.75     | 1.75   |
| NTCR-T1-R10 | 10     | 50    | 14     | 58    | 54    | 50    | 4 | 7.5  | 24  | 58  | 54    | 1        | 2      |
| NTCR-T1-R12 | 12     | 58    | 16     | 68    | 64    | 60    | 4 | 8.5  | 29  | 66  | 62    | 1        | 2      |
| NTCR-T1-R14 | 14     | 64    | 20     | 74    | 70    | 66    | 4 | 9.5  | 32  | 72  | 68    | 1        | 2      |
| NTCR-T1-R16 | 16     | 72    | 22     | 80    | 76    | 72    | 4 | 10.5 | 35  | 80  | 76    | 1        | 2      |
| NTCR-T1-R18 | 18     | 76    | 24     | 84    | 80    | 76    | 4 | 11.5 | 37  | 84  | 80    | 1        | 2      |
| NTCR-T1-R20 | 20     | 90    | 26     | 92    | 88    | 84    | 4 | 12.5 | 41  | 100 | 94.75 | 1.25     | 2.25   |
| NTCR-T1-R22 | 22     | 92    | 28     | 94    | 90    | 86    | 4 | 13.5 | 42  | 102 | 96.75 | 1.25     | 2.25   |
| NTCR-T1-R24 | 24     | 94    | 30     | 96    | 92    | 88    | 4 | 14.5 | 43  | 104 | 98.75 | 1.25     | 2.25   |

\* This 1" internally insulated model provides a great reduction in the outer surface temperature. Other models and custom designs are available upon request. Dimensions subject to change without notice. All silencers are equipped with drain ports on inlet side. The silencer is all welded construction and coated with high heat black paint for maximum durability.

\*\* Standard inlet/outlet position.

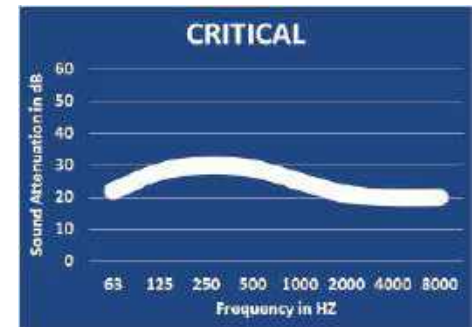
### OPTIONS

- Versatile connections including ANSI pattern flanges, NPT, slip-on, engine flange, schedule 40 and others
- Aluminized Steel, Stainless Steel 304 or 316 construction
- Two inlet configuration is available upon request

### ACCESSORIES

- Hardware Kits
- Flexible connectors and expansion joints
- Elbows
- Thimbles
- Raincaps
- Thermal insulation: integrated or with thermal insulation blankets

### TYPICAL ATTENUATION CURVE



Please see our accessories catalog for a complete listing.

Contact Nett Technologies with your projects design requirements and specifications for optimized noise control solutions.

# Critical Grade Silencers

## Rectangular Shape with 2" Insulation (29-34 dBA). Model NTCR2-R

Nett Technologies' Critical Grade Silencers are designed to achieve maximum performance with the least amount of backpressure.

These reactive/absorptive silencers are used for reciprocating or positive displacement engines where noise level regulations are medium.

### FEATURES & BENEFITS

- Over 25 years of excellence in manufacturing noise and emission control solutions
- Compact modular designs providing ease of installations, less weight and less foot-print
- Responsive lead time for both standard and custom designs to meet your needs
- Customized engineered system solutions to meet challenging integration and engine requirements

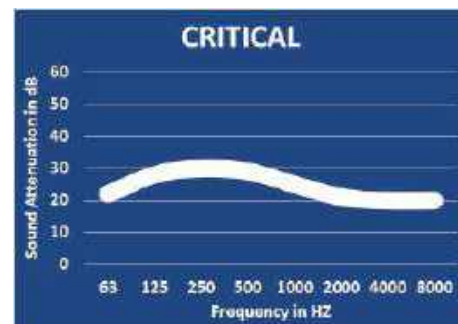
### OPTIONS

- Versatile connections including ANSI pattern flanges, NPT, slip-on, engine flange, schedule 40 and others
- Aluminized Steel, Stainless Steel 304 or 316 construction
- Two inlet configuration is available upon request

### ACCESSORIES

- Hardware Kits
- Flexible connectors and expansion joints
- Elbows
- Thimbles
- Raincaps
- Thermal insulation: integrated or with thermal insulation blankets

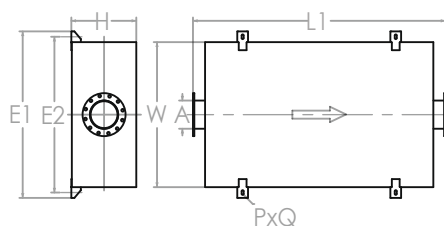
### TYPICAL ATTENUATION CURVE



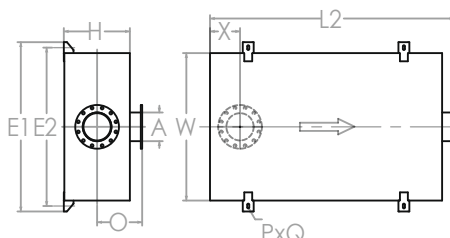
Please see our accessories catalog for a complete listing.

Contact Nett Technologies with your projects design requirements and specifications for optimized noise control solutions.

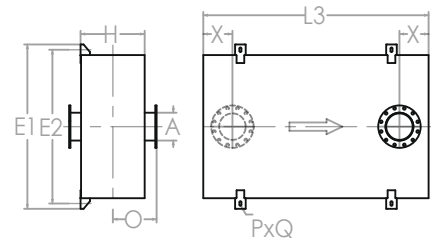
### TYPICAL CONFIGURATIONS



END IN END OUT (EI-EO)



BOTTOM IN END OUT (BI-EO)



BOTTOM IN TOP OUT (BI-TO)

### PRODUCT DIMENSIONS (in)

| Model*      | A      | W     | H      | L1    | L2    | L3    | O | X**  | X   | E1  | E2    | P        | Q      |
|-------------|--------|-------|--------|-------|-------|-------|---|------|-----|-----|-------|----------|--------|
|             | Outlet | Width | Height | EI-EO | BI-EO | BI-TO |   | Min  | Max |     |       | Slot Dia | Slot L |
| NTCR-T2-R4  | 4      | 28    | 8      | 32    | 28    | 24    | 4 | 4.5  | 11  | 35  | 31    | 0.75     | 1.75   |
| NTCR-T2-R5  | 5      | 30    | 10     | 36    | 32    | 28    | 4 | 5    | 13  | 37  | 33    | 0.75     | 1.75   |
| NTCR-T2-R6  | 6      | 36    | 10     | 38    | 34    | 30    | 4 | 5.5  | 14  | 43  | 39    | 0.75     | 1.75   |
| NTCR-T2-R8  | 8      | 44    | 12     | 50    | 46    | 42    | 4 | 6.5  | 20  | 51  | 47    | 0.75     | 1.75   |
| NTCR-T2-R10 | 10     | 50    | 14     | 58    | 54    | 50    | 4 | 7.5  | 24  | 58  | 54    | 1        | 2      |
| NTCR-T2-R12 | 12     | 58    | 16     | 68    | 64    | 60    | 4 | 8.5  | 29  | 66  | 62    | 1        | 2      |
| NTCR-T2-R14 | 14     | 64    | 20     | 74    | 70    | 66    | 4 | 9.5  | 32  | 72  | 68    | 1        | 2      |
| NTCR-T2-R16 | 16     | 72    | 22     | 80    | 76    | 72    | 4 | 10.5 | 35  | 80  | 76    | 1        | 2      |
| NTCR-T2-R18 | 18     | 76    | 24     | 84    | 80    | 76    | 4 | 11.5 | 37  | 84  | 80    | 1        | 2      |
| NTCR-T2-R20 | 20     | 90    | 26     | 92    | 88    | 84    | 4 | 12.5 | 41  | 100 | 94.75 | 1.25     | 2.25   |
| NTCR-T2-R22 | 22     | 92    | 28     | 94    | 90    | 86    | 4 | 13.5 | 42  | 102 | 96.75 | 1.25     | 2.25   |
| NTCR-T2-R24 | 24     | 94    | 30     | 96    | 92    | 88    | 4 | 14.5 | 43  | 104 | 98.75 | 1.25     | 2.25   |

\* This 2" internally insulated model provides a great reduction in the outer surface temperature. Other models and custom designs are available upon request. Dimensions subject to change without notice. All silencers are equipped with drain ports on inlet side. The silencer is all welded construction and coated with high heat black paint for maximum durability.

\*\* Standard inlet/outlet position.

# Super Critical Grade Silencers

## Rectangular Shape (30-37 dBA). Model NTSC-R

Nett Technologies' Super Critical Grade Silencers are designed to achieve maximum performance with the least amount of backpressure.

These reactive silencers are used for reciprocating or positive displacement engines where noise level regulations are medium-high.

### FEATURES & BENEFITS

- Over 25 years of excellence in manufacturing noise and emission control solutions
- Compact modular designs providing ease of installations, less weight and less foot-print
- Responsive lead time for both standard and custom designs to meet your needs
- Customized engineered system solutions to meet challenging integration and engine requirements

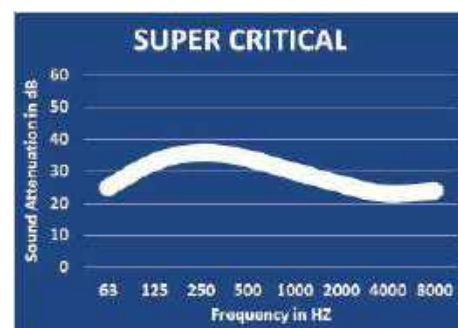
### OPTIONS

- Versatile connections including ANSI pattern flanges, NPT, slip-on, engine flange, schedule 40 and others
- Aluminized Steel, Stainless Steel 304 or 316 construction
- Two inlet configuration is available upon request

### ACCESSORIES

- Hardware Kits
- Flexible connectors and expansion joints
- Elbows
- Thimbles
- Raincaps
- Thermal insulation: integrated or with thermal insulation blankets

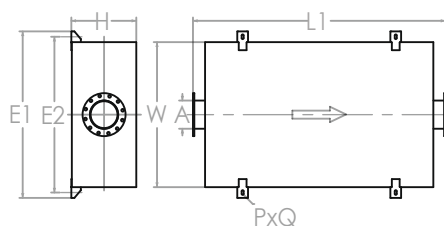
### TYPICAL ATTENUATION CURVE



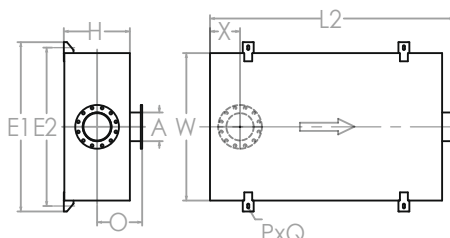
Please see our accessories catalog for a complete listing.

Contact Nett Technologies with your projects design requirements and specifications for optimized noise control solutions.

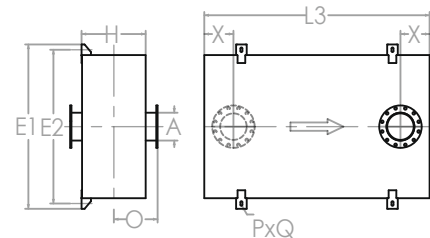
### TYPICAL CONFIGURATIONS



END IN END OUT (EI-EO)



BOTTOM IN END OUT (BI-EO)



BOTTOM IN TOP OUT (BI-TO)

### PRODUCT DIMENSIONS (in)

| Model*   | A      | W     | H      | L1    | L2    | L3    | O | X**  | X   | E1  | E2    | P        | Q      |
|----------|--------|-------|--------|-------|-------|-------|---|------|-----|-----|-------|----------|--------|
|          | Outlet | Width | Height | EI-EO | BI-EO | BI-TO |   | Min  | Max |     |       | Slot Dia | Slot L |
| NTSC-R4  | 4      | 28    | 8      | 32    | 28    | 24    | 4 | 4.5  | 11  | 35  | 31    | 0.75     | 1.75   |
| NTSC-R5  | 5      | 30    | 10     | 36    | 32    | 28    | 4 | 5    | 13  | 37  | 33    | 0.75     | 1.75   |
| NTSC-R6  | 6      | 36    | 10     | 38    | 34    | 30    | 4 | 5.5  | 14  | 43  | 39    | 0.75     | 1.75   |
| NTSC-R8  | 8      | 44    | 12     | 50    | 46    | 42    | 4 | 6.5  | 20  | 51  | 47    | 0.75     | 1.75   |
| NTSC-R10 | 10     | 50    | 14     | 58    | 54    | 50    | 4 | 7.5  | 24  | 58  | 54    | 1        | 2      |
| NTSC-R12 | 12     | 58    | 16     | 68    | 64    | 60    | 4 | 8.5  | 29  | 66  | 62    | 1        | 2      |
| NTSC-R14 | 14     | 64    | 20     | 74    | 70    | 66    | 4 | 9.5  | 32  | 72  | 68    | 1        | 2      |
| NTSC-R16 | 16     | 72    | 22     | 80    | 76    | 72    | 4 | 10.5 | 35  | 80  | 76    | 1        | 2      |
| NTSC-R18 | 18     | 76    | 24     | 84    | 80    | 76    | 4 | 11.5 | 37  | 84  | 80    | 1        | 2      |
| NTSC-R20 | 20     | 90    | 26     | 92    | 88    | 84    | 4 | 12.5 | 41  | 100 | 94.75 | 1.25     | 2.25   |
| NTSC-R22 | 22     | 92    | 28     | 94    | 90    | 86    | 4 | 13.5 | 42  | 102 | 96.75 | 1.25     | 2.25   |
| NTSC-R24 | 24     | 94    | 30     | 96    | 92    | 88    | 4 | 14.5 | 43  | 104 | 98.75 | 1.25     | 2.25   |

\* Other models and custom designs are available upon request. Dimensions subject to change without notice. All silencers are equipped with drain ports on inlet side. The silencer is all welded construction and coated with high heat black paint for maximum durability.

\*\* Standard inlet/outlet position.

# Super Critical Grade Silencers

## Rectangular Shape with 1" Insulation (32-39 dBA). Model NTSC1-R

Nett Technologies' Super Critical Grade Silencers are designed to achieve maximum performance with the least amount of backpressure. These reactive/absorptive silencers are used for reciprocating or positive displacement engines where noise level regulations are medium-high.

### FEATURES & BENEFITS

- Over 25 years of excellence in manufacturing noise and emission control solutions
- Compact modular designs providing ease of installations, less weight and less foot-print
- Responsive lead time for both standard and custom designs to meet your needs
- Customized engineered system solutions to meet challenging integration and engine requirements

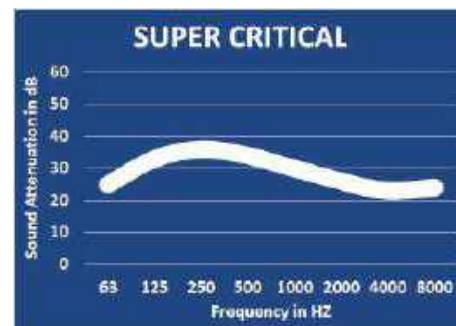
### OPTIONS

- Versatile connections including ANSI pattern flanges, NPT, slip-on, engine flange, schedule 40 and others
- Aluminized Steel, Stainless Steel 304 or 316 construction
- Two inlet configuration is available upon request

### ACCESSORIES

- Hardware Kits
- Flexible connectors and expansion joints
- Elbows
- Thimbles
- Raincaps
- Thermal insulation: integrated or with thermal insulation blankets

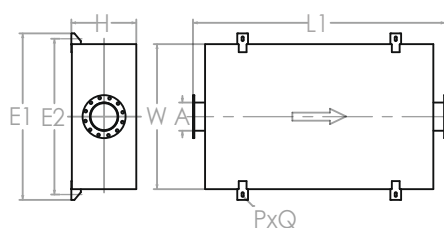
### TYPICAL ATTENUATION CURVE



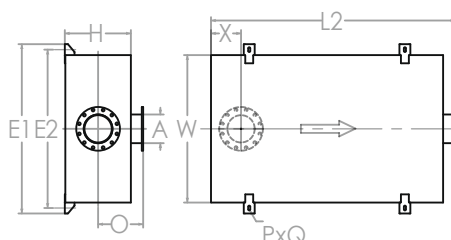
Please see our accessories catalog for a complete listing.

Contact Nett Technologies with your projects design requirements and specifications for optimized noise control solutions.

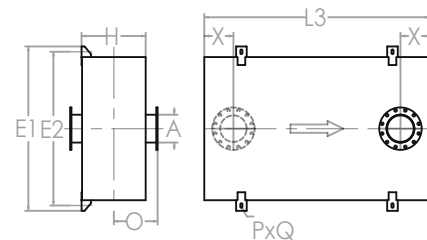
### TYPICAL CONFIGURATIONS



END IN END OUT (EI-EO)



BOTTOM IN END OUT (BI-EO)



BOTTOM IN TOP OUT (BI-TO)

### PRODUCT DIMENSIONS (in)

| Model*      | A      | W     | H      | L1    | L2    | L3    | O | X**  | X   | E1  | E2    | P        | Q      |
|-------------|--------|-------|--------|-------|-------|-------|---|------|-----|-----|-------|----------|--------|
|             | Outlet | Width | Height | EI-EO | BI-EO | BI-TO |   | Min  | Max |     |       | Slot Dia | Slot L |
| NTSC-T1-R4  | 4      | 28    | 8      | 32    | 28    | 24    | 4 | 4.5  | 11  | 35  | 31    | 0.75     | 1.75   |
| NTSC-T1-R5  | 5      | 30    | 10     | 36    | 32    | 28    | 4 | 5    | 13  | 37  | 33    | 0.75     | 1.75   |
| NTSC-T1-R6  | 6      | 36    | 10     | 38    | 34    | 30    | 4 | 5.5  | 14  | 43  | 39    | 0.75     | 1.75   |
| NTSC-T1-R8  | 8      | 44    | 12     | 50    | 46    | 42    | 4 | 6.5  | 20  | 51  | 47    | 0.75     | 1.75   |
| NTSC-T1-R10 | 10     | 50    | 14     | 58    | 54    | 50    | 4 | 7.5  | 24  | 58  | 54    | 1        | 2      |
| NTSC-T1-R12 | 12     | 58    | 16     | 68    | 64    | 60    | 4 | 8.5  | 29  | 66  | 62    | 1        | 2      |
| NTSC-T1-R14 | 14     | 64    | 20     | 74    | 70    | 66    | 4 | 9.5  | 32  | 72  | 68    | 1        | 2      |
| NTSC-T1-R16 | 16     | 72    | 22     | 80    | 76    | 72    | 4 | 10.5 | 35  | 80  | 76    | 1        | 2      |
| NTSC-T1-R18 | 18     | 76    | 24     | 84    | 80    | 76    | 4 | 11.5 | 37  | 84  | 80    | 1        | 2      |
| NTSC-T1-R20 | 20     | 90    | 26     | 92    | 88    | 84    | 4 | 12.5 | 41  | 100 | 94.75 | 1.25     | 2.25   |
| NTSC-T1-R22 | 22     | 92    | 28     | 94    | 90    | 86    | 4 | 13.5 | 42  | 102 | 96.75 | 1.25     | 2.25   |
| NTSC-T1-R24 | 24     | 94    | 30     | 96    | 92    | 88    | 4 | 14.5 | 43  | 104 | 98.75 | 1.25     | 2.25   |

\* This 1" internally insulated model provides a great reduction in the outer surface temperature. Other models and custom designs are available upon request. Dimensions subject to change without notice. All silencers are equipped with drain ports on inlet side. The silencer is all welded construction and coated with high heat black paint for maximum durability.

\*\* Standard inlet/outlet position.

# Super Critical Grade Silencers

## Rectangular Shape with 2" Insulation (34-41 dBA). Model NTSC2-R

Nett Technologies' Super Critical Grade Silencers are designed to achieve maximum performance with the least amount of backpressure.

These reactive/absorptive silencers are used for reciprocating or positive displacement engines where noise level regulations are medium-high.

### FEATURES & BENEFITS

- Over 25 years of excellence in manufacturing noise and emission control solutions
- Compact modular designs providing ease of installations, less weight and less foot-print
- Responsive lead time for both standard and custom designs to meet your needs
- Customized engineered system solutions to meet challenging integration and engine requirements

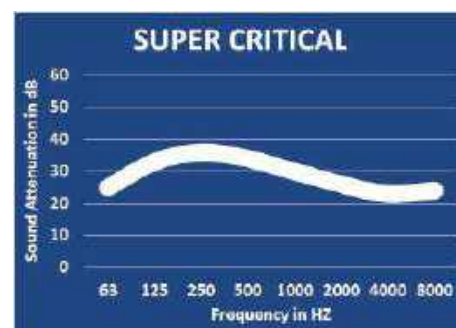
### OPTIONS

- Versatile connections including ANSI pattern flanges, NPT, slip-on, engine flange, schedule 40 and others
- Aluminized Steel, Stainless Steel 304 or 316 construction
- Two inlet configuration is available upon request

### ACCESSORIES

- Hardware Kits
- Flexible connectors and expansion joints
- Elbows
- Thimbles
- Raincaps
- Thermal insulation: integrated or with thermal insulation blankets

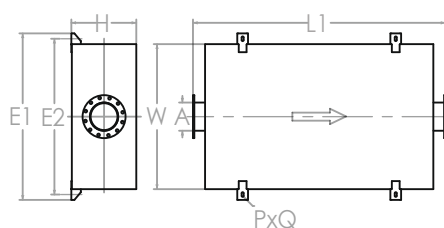
### TYPICAL ATTENUATION CURVE



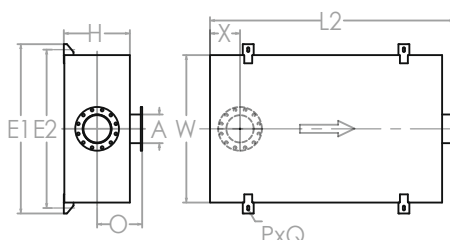
Please see our accessories catalog for a complete listing.

Contact Nett Technologies with your projects design requirements and specifications for optimized noise control solutions.

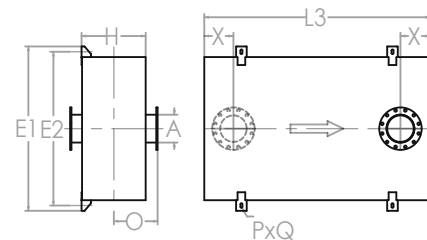
### TYPICAL CONFIGURATIONS



END IN END OUT (EI-EO)



BOTTOM IN END OUT (BI-EO)



BOTTOM IN TOP OUT (BI-TO)

### PRODUCT DIMENSIONS (in)

| Model*      | A      | W     | H      | L1    | L2    | L3    | O | X**  | X   | E1  | E2     | P        | Q      |
|-------------|--------|-------|--------|-------|-------|-------|---|------|-----|-----|--------|----------|--------|
|             | Outlet | Width | Height | EI-EO | BI-EO | BI-TO |   | Min  | Max |     |        | Slot Dia | Slot L |
| NTCR-T2-R4  | 4      | 30    | 10     | 34    | 30    | 26    | 4 | 4.5  | 12  | 37  | 33     | 0.75     | 1.75   |
| NTCR-T2-R5  | 5      | 32    | 12     | 38    | 34    | 30    | 4 | 5    | 14  | 39  | 35     | 0.75     | 1.75   |
| NTCR-T2-R6  | 6      | 38    | 12     | 40    | 36    | 32    | 4 | 5.5  | 15  | 45  | 41     | 0.75     | 1.75   |
| NTCR-T2-R8  | 8      | 46    | 14     | 52    | 48    | 44    | 4 | 6.5  | 21  | 53  | 49     | 0.75     | 1.75   |
| NTCR-T2-R10 | 10     | 52    | 16     | 60    | 56    | 52    | 4 | 7.5  | 25  | 60  | 56     | 1        | 2      |
| NTCR-T2-R12 | 12     | 60    | 18     | 70    | 66    | 62    | 4 | 8.5  | 30  | 68  | 64     | 1        | 2      |
| NTCR-T2-R14 | 14     | 66    | 22     | 74    | 70    | 66    | 4 | 9.5  | 32  | 74  | 70     | 1        | 2      |
| NTCR-T2-R16 | 16     | 74    | 24     | 82    | 78    | 74    | 4 | 10.5 | 36  | 82  | 78     | 1        | 2      |
| NTCR-T2-R18 | 18     | 78    | 26     | 86    | 82    | 78    | 4 | 11.5 | 38  | 86  | 82     | 1        | 2      |
| NTCR-T2-R20 | 20     | 92    | 28     | 94    | 90    | 86    | 4 | 12.5 | 42  | 102 | 96.75  | 1.25     | 2.25   |
| NTCR-T2-R22 | 22     | 94    | 30     | 96    | 92    | 88    | 4 | 13.5 | 43  | 104 | 98.75  | 1.25     | 2.25   |
| NTCR-T2-R24 | 24     | 96    | 32     | 98    | 94    | 90    | 4 | 14.5 | 44  | 106 | 100.75 | 1.25     | 2.25   |

\* This 2" internally insulated model provides a great reduction in the outer surface temperature. Other models and custom designs are available upon request. Dimensions subject to change without notice. All silencers are equipped with drain ports on inlet side. The silencer is all welded construction and coated with high heat black paint for maximum durability.

\*\* Standard inlet/outlet position.



# Hospital Grade Silencers

## Rectangular Shape with 1" Insulation (37-44 dBA). Model NTH01-R

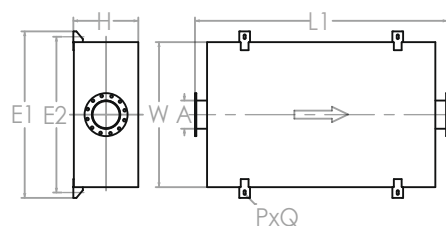
Nett Technologies' Hospital Grade Silencers are designed to achieve maximum performance with the least amount of backpressure.

These reactive/absorptive silencers are used for reciprocating or positive displacement engines where noise level regulations are high.

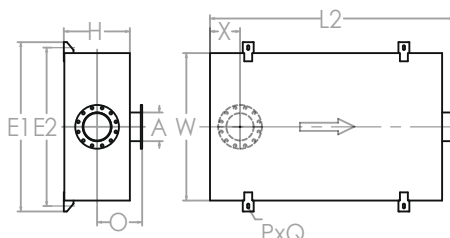
### FEATURES & BENEFITS

- Over 25 years of excellence in manufacturing noise and emission control solutions
- Compact modular designs providing ease of installations, less weight and less foot-print
- Responsive lead time for both standard and custom designs to meet your needs
- Customized engineered system solutions to meet challenging integration and engine requirements

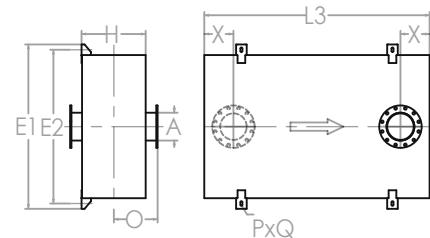
### TYPICAL CONFIGURATIONS



END IN END OUT (EI-EO)



BOTTOM IN END OUT (BI-EO)



BOTTOM IN TOP OUT (BI-TO)

### PRODUCT DIMENSIONS (in)

| Model*      | A      | W     | H      | L1    | L2    | L3    | O | X**  | X   | E1  | E2    | P        | Q      |
|-------------|--------|-------|--------|-------|-------|-------|---|------|-----|-----|-------|----------|--------|
|             | Outlet | Width | Height | EI-EO | BI-EO | BI-TO |   | Min  | Max |     |       | Slot Dia | Slot L |
| NTHO-T1-R4  | 4      | 32    | 8      | 36    | 32    | 28    | 4 | 4.5  | 13  | 39  | 35    | 0.75     | 1.75   |
| NTHO-T1-R5  | 5      | 34    | 10     | 40    | 36    | 32    | 4 | 5    | 15  | 41  | 37    | 0.75     | 1.75   |
| NTHO-T1-R6  | 6      | 36    | 10     | 42    | 38    | 34    | 4 | 5.5  | 16  | 43  | 39    | 0.75     | 1.75   |
| NTHO-T1-R8  | 8      | 50    | 12     | 54    | 50    | 46    | 4 | 6.5  | 22  | 58  | 54    | 1        | 2      |
| NTHO-T1-R10 | 10     | 56    | 14     | 62    | 58    | 54    | 4 | 7.5  | 26  | 64  | 60    | 1        | 2      |
| NTHO-T1-R12 | 12     | 62    | 18     | 68    | 64    | 60    | 4 | 8.5  | 29  | 70  | 66    | 1        | 2      |
| NTHO-T1-R14 | 14     | 68    | 22     | 76    | 72    | 68    | 4 | 9.5  | 33  | 76  | 72    | 1        | 2      |
| NTHO-T1-R16 | 16     | 74    | 24     | 84    | 80    | 76    | 4 | 10.5 | 37  | 82  | 78    | 1        | 2      |
| NTHO-T1-R18 | 18     | 84    | 26     | 88    | 84    | 80    | 4 | 11.5 | 39  | 94  | 88.75 | 1.25     | 2.25   |
| NTHO-T1-R20 | 20     | 90    | 28     | 96    | 92    | 88    | 4 | 12.5 | 43  | 100 | 94.75 | 1.25     | 2.25   |
| NTHO-T1-R22 | 22     | 92    | 30     | 98    | 94    | 90    | 4 | 13.5 | 44  | 102 | 96.75 | 1.25     | 2.25   |
| NTHO-T1-R24 | 24     | 94    | 32     | 100   | 96    | 92    | 4 | 14.5 | 45  | 104 | 98.75 | 1.25     | 2.25   |

\* This 1" internally insulated model provides a great reduction in the outer surface temperature. Other models and custom designs are available upon request. Dimensions subject to change without notice. All silencers are equipped with drain ports on inlet side. The silencer is all welded construction and coated with high heat black paint for maximum durability.

\*\* Standard inlet/outlet position.

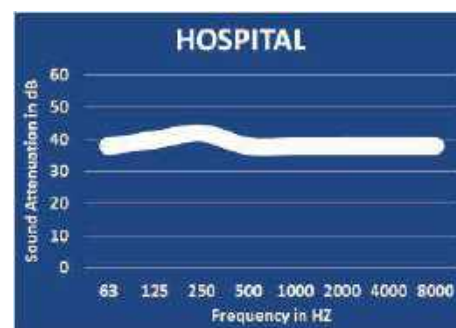
### OPTIONS

- Versatile connections including ANSI pattern flanges, NPT, slip-on, engine flange, schedule 40 and others
- Aluminized Steel, Stainless Steel 304 or 316 construction
- Two inlet configuration is available upon request

### ACCESSORIES

- Hardware Kits
- Flexible connectors and expansion joints
- Elbows
- Thimbles
- Raincaps
- Thermal insulation: integrated or with thermal insulation blankets

### TYPICAL ATTENUATION CURVE



Please see our accessories catalog for a complete listing.

Contact Nett Technologies with your projects design requirements and specifications for optimized noise control solutions.

# Hospital Grade Silencers

## Rectangular Shape with 2" Insulation (39-46 dBA). Model NTH02-R

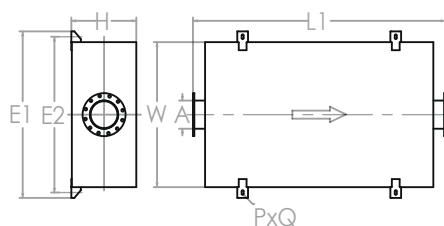
Nett Technologies' Hospital Grade Silencers are designed to achieve maximum performance with the least amount of backpressure.

These reactive/absorptive silencers are used for reciprocating or positive displacement engines where noise level regulations are high.

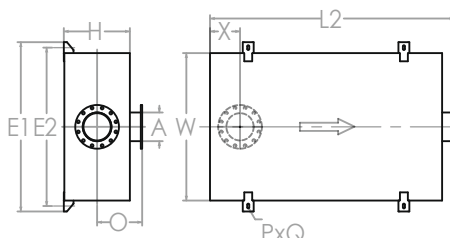
### FEATURES & BENEFITS

- Over 25 years of excellence in manufacturing noise and emission control solutions
- Compact modular designs providing ease of installations, less weight and less foot-print
- Responsive lead time for both standard and custom designs to meet your needs
- Customized engineered system solutions to meet challenging integration and engine requirements

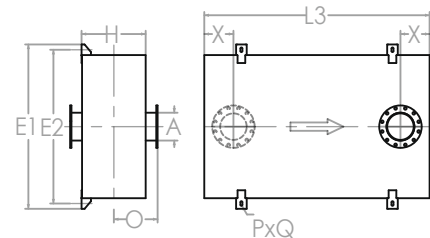
### TYPICAL CONFIGURATIONS



END IN END OUT (EI-EO)



BOTTOM IN END OUT (BI-EO)



BOTTOM IN TOP OUT (BI-TO)

### PRODUCT DIMENSIONS (in)

| Model*      | A      | W     | H      | L1    | L2    | L3    | O | X**  | X   | E1  | E2     | P        | Q      |
|-------------|--------|-------|--------|-------|-------|-------|---|------|-----|-----|--------|----------|--------|
|             | Outlet | Width | Height | EI-EO | BI-EO | BI-TO |   | Min  | Max |     |        | Slot Dia | Slot L |
| NTHO-T2-R4  | 4      | 34    | 10     | 36    | 32    | 28    | 4 | 4.5  | 13  | 41  | 37     | 0.75     | 1.75   |
| NTHO-T2-R5  | 5      | 36    | 12     | 40    | 36    | 32    | 4 | 5    | 15  | 43  | 39     | 0.75     | 1.75   |
| NTHO-T2-R6  | 6      | 38    | 12     | 42    | 38    | 34    | 4 | 5.5  | 16  | 45  | 41     | 0.75     | 1.75   |
| NTHO-T2-R8  | 8      | 52    | 14     | 54    | 50    | 46    | 4 | 6.5  | 22  | 60  | 56     | 1        | 2      |
| NTHO-T2-R10 | 10     | 58    | 16     | 62    | 58    | 54    | 4 | 7.5  | 26  | 66  | 62     | 1        | 2      |
| NTHO-T2-R12 | 12     | 64    | 20     | 68    | 64    | 60    | 4 | 8.5  | 29  | 72  | 68     | 1        | 2      |
| NTHO-T2-R14 | 14     | 70    | 24     | 76    | 72    | 68    | 4 | 9.5  | 33  | 78  | 74     | 1        | 2      |
| NTHO-T2-R16 | 16     | 76    | 26     | 84    | 80    | 76    | 4 | 10.5 | 37  | 84  | 80     | 1        | 2      |
| NTHO-T2-R18 | 18     | 86    | 28     | 88    | 84    | 80    | 4 | 11.5 | 39  | 96  | 90.75  | 1.25     | 2.25   |
| NTHO-T2-R20 | 20     | 92    | 30     | 96    | 92    | 88    | 4 | 12.5 | 43  | 102 | 96.75  | 1.25     | 2.25   |
| NTHO-T2-R22 | 22     | 94    | 32     | 98    | 94    | 90    | 4 | 13.5 | 44  | 104 | 98.75  | 1.25     | 2.25   |
| NTHO-T2-R24 | 24     | 96    | 34     | 100   | 96    | 92    | 4 | 14.5 | 45  | 106 | 100.75 | 1.25     | 2.25   |

\* This 2" internally insulated model provides a great reduction in the outer surface temperature. Other models and custom designs are available upon request. Dimensions subject to change without notice. All silencers are equipped with drain ports on inlet side. The silencer is all welded construction and coated with high heat black paint for maximum durability.

\*\* Standard inlet/outlet position.

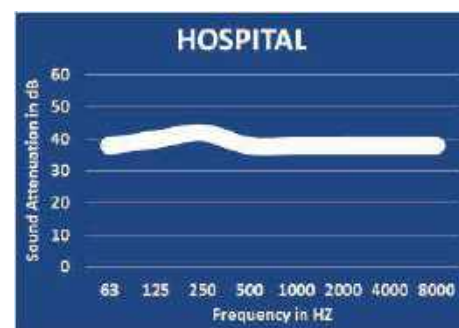
### OPTIONS

- Versatile connections including ANSI pattern flanges, NPT, slip-on, engine flange, schedule 40 and others
- Aluminized Steel, Stainless Steel 304 or 316 construction
- Two inlet configuration is available upon request

### ACCESSORIES

- Hardware Kits
- Flexible connectors and expansion joints
- Elbows
- Thimbles
- Raincaps
- Thermal insulation: integrated or with thermal insulation blankets

### TYPICAL ATTENUATION CURVE



Please see our accessories catalog for a complete listing.

Contact Nett Technologies with your projects design requirements and specifications for optimized noise control solutions.

# Hospital Plus Grade Silencers

## Rectangular Shape with 1" Insulation (40-50 dBA). Model NTHP1-R

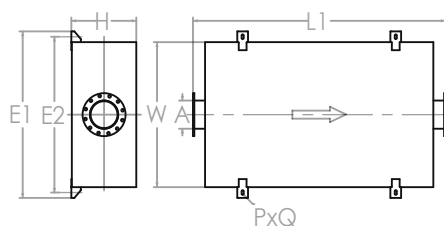
Nett Technologies' Hospital Plus Grade Silencers are designed to achieve maximum performance with the least amount of backpressure.

These reactive/absorptive silencers are used for reciprocating or positive displacement engines where noise level regulations are critically-high.

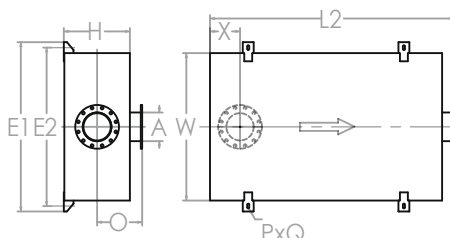
### FEATURES & BENEFITS

- Over 25 years of excellence in manufacturing noise and emission control solutions
- Compact modular designs providing ease of installations, less weight and less foot-print
- Responsive lead time for both standard and custom designs to meet your needs
- Customized engineered system solutions to meet challenging integration and engine requirements

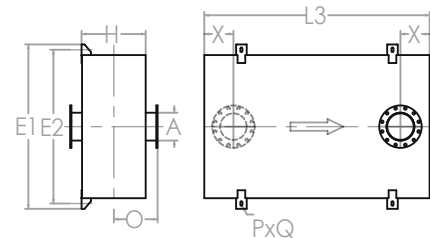
### TYPICAL CONFIGURATIONS



END IN END OUT (EI-EO)



BOTTOM IN END OUT (BI-EO)



BOTTOM IN TOP OUT (BI-TO)

### PRODUCT DIMENSIONS (in)

| Model*      | A      | W     | H      | L1    | L2    | L3    | O | X**  | X   | E1  | E2     | P        | Q      |
|-------------|--------|-------|--------|-------|-------|-------|---|------|-----|-----|--------|----------|--------|
|             | Outlet | Width | Height | EI-EO | BI-EO | BI-TO |   | Min  | Max |     |        | Slot Dia | Slot L |
| NTHP-T1-R4  | 4      | 38    | 10     | 56    | 52    | 48    | 4 | 4.5  | 23  | 45  | 41     | 0.75     | 1.75   |
| NTHP-T1-R5  | 5      | 42    | 12     | 62    | 58    | 54    | 4 | 5    | 26  | 49  | 45     | 0.75     | 1.75   |
| NTHP-T1-R6  | 6      | 44    | 12     | 68    | 64    | 60    | 4 | 5.5  | 29  | 51  | 47     | 0.75     | 1.75   |
| NTHP-T1-R8  | 8      | 58    | 14     | 94    | 90    | 86    | 4 | 6.5  | 42  | 66  | 62     | 1        | 2      |
| NTHP-T1-R10 | 10     | 64    | 16     | 104   | 100   | 96    | 4 | 7.5  | 47  | 72  | 68     | 1        | 2      |
| NTHP-T1-R12 | 12     | 68    | 20     | 108   | 104   | 100   | 4 | 8.5  | 49  | 76  | 72     | 1        | 2      |
| NTHP-T1-R14 | 14     | 72    | 24     | 112   | 108   | 104   | 4 | 9.5  | 51  | 80  | 76     | 1        | 2      |
| NTHP-T1-R16 | 16     | 82    | 26     | 120   | 116   | 112   | 4 | 10.5 | 55  | 92  | 86.75  | 1.25     | 2.25   |
| NTHP-T1-R18 | 18     | 92    | 28     | 128   | 124   | 120   | 4 | 11.5 | 59  | 102 | 96.75  | 1.25     | 2.25   |
| NTHP-T1-R20 | 20     | 94    | 30     | 152   | 148   | 144   | 4 | 12.5 | 71  | 104 | 98.75  | 1.25     | 2.25   |
| NTHP-T1-R22 | 22     | 96    | 32     | 164   | 160   | 156   | 4 | 13.5 | 77  | 106 | 100.75 | 1.25     | 2.25   |
| NTHP-T1-R24 | 24     | 96    | 34     | 176   | 172   | 168   | 4 | 14.5 | 83  | 106 | 100.75 | 1.25     | 2.25   |

\* This 1" internally insulated model provides a great reduction in the outer surface temperature. Other models and custom designs are available upon request. Dimensions subject to change without notice. All silencers are equipped with drain ports on inlet side. The silencer is all welded construction and coated with high heat black paint for maximum durability.

\*\* Standard inlet/outlet position.

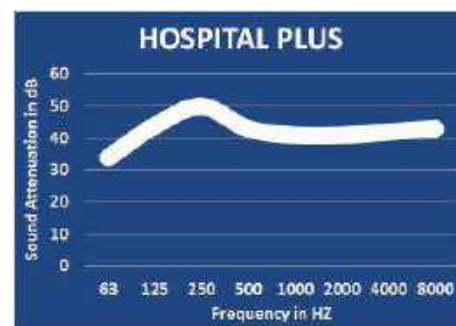
### OPTIONS

- Versatile connections including ANSI pattern flanges, NPT, slip-on, engine flange, schedule 40 and others
- Aluminized Steel, Stainless Steel 304 or 316 construction
- Two inlet configuration is available upon request

### ACCESSORIES

- Hardware Kits
- Flexible connectors and expansion joints
- Elbows
- Thimbles
- Raincaps
- Thermal insulation: integrated or with thermal insulation blankets

### TYPICAL ATTENUATION CURVE



Please see our accessories catalog for a complete listing.

Contact Nett Technologies with your projects design requirements and specifications for optimized noise control solutions.

# Hospital Plus Grade Silencers

## Rectangular Shape with 2" Insulation (42-52 dBA). Model NTHP2-R

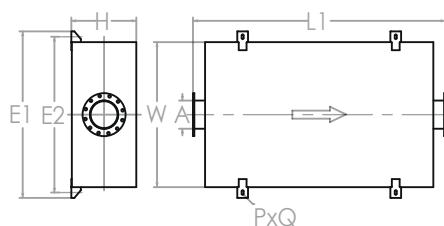
Nett Technologies' Hospital Plus Grade Silencers are designed to achieve maximum performance with the least amount of backpressure.

These reactive/absorptive silencers are used for reciprocating or positive displacement engines where noise level regulations are critically-high.

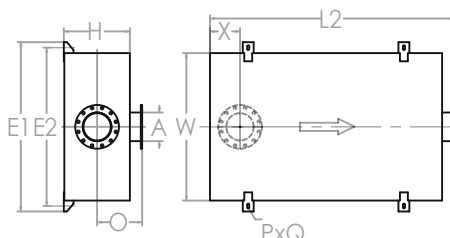
### FEATURES & BENEFITS

- Over 25 years of excellence in manufacturing noise and emission control solutions
- Compact modular designs providing ease of installations, less weight and less foot-print
- Responsive lead time for both standard and custom designs to meet your needs
- Customized engineered system solutions to meet challenging integration and engine requirements

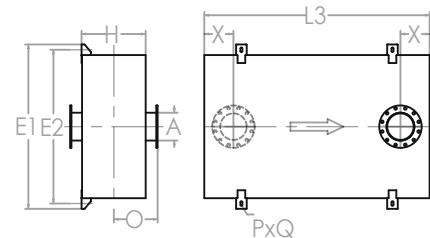
### TYPICAL CONFIGURATIONS



END IN END OUT (EI-EO)



BOTTOM IN END OUT (BI-EO)



BOTTOM IN TOP OUT (BI-TO)

### PRODUCT DIMENSIONS (in)

| Model*      | A      | W     | H      | L1    | L2    | L3    | O | X**  | X   | E1  | E2     | P        | Q      |
|-------------|--------|-------|--------|-------|-------|-------|---|------|-----|-----|--------|----------|--------|
|             | Outlet | Width | Height | EI-EO | BI-EO | BI-TO |   | Min  | Max |     |        | Slot Dia | Slot L |
| NTHP-T2-R4  | 4      | 38    | 12     | 62    | 58    | 54    | 4 | 4.5  | 26  | 45  | 41     | 0.75     | 1.75   |
| NTHP-T2-R5  | 5      | 42    | 14     | 68    | 64    | 60    | 4 | 5    | 29  | 49  | 45     | 0.75     | 1.75   |
| NTHP-T2-R6  | 6      | 44    | 14     | 80    | 76    | 72    | 4 | 5.5  | 35  | 51  | 47     | 0.75     | 1.75   |
| NTHP-T2-R8  | 8      | 58    | 16     | 94    | 90    | 86    | 4 | 6.5  | 42  | 66  | 62     | 1        | 2      |
| NTHP-T2-R10 | 10     | 64    | 18     | 104   | 100   | 96    | 4 | 7.5  | 47  | 72  | 68     | 1        | 2      |
| NTHP-T2-R12 | 12     | 68    | 22     | 108   | 104   | 100   | 4 | 8.5  | 49  | 76  | 72     | 1        | 2      |
| NTHP-T2-R14 | 14     | 72    | 26     | 112   | 108   | 104   | 4 | 9.5  | 51  | 80  | 76     | 1        | 2      |
| NTHP-T2-R16 | 16     | 82    | 28     | 128   | 124   | 120   | 4 | 10.5 | 59  | 92  | 86.75  | 1.25     | 2.25   |
| NTHP-T2-R18 | 18     | 92    | 30     | 140   | 136   | 132   | 4 | 11.5 | 65  | 102 | 96.75  | 1.25     | 2.25   |
| NTHP-T2-R20 | 20     | 94    | 32     | 152   | 148   | 144   | 4 | 12.5 | 71  | 104 | 98.75  | 1.25     | 2.25   |
| NTHP-T2-R22 | 22     | 96    | 34     | 176   | 172   | 168   | 4 | 13.5 | 83  | 106 | 100.75 | 1.25     | 2.25   |
| NTHP-T2-R24 | 24     | 96    | 36     | 188   | 184   | 180   | 4 | 14.5 | 89  | 106 | 100.75 | 1.25     | 2.25   |

\* This 2" internally insulated model provides a great reduction in the outer surface temperature. Other models and custom designs are available upon request. Dimensions subject to change without notice. All silencers are equipped with drain ports on inlet side. The silencer is all welded construction and coated with high heat black paint for maximum durability.

\*\* Standard inlet/outlet position.

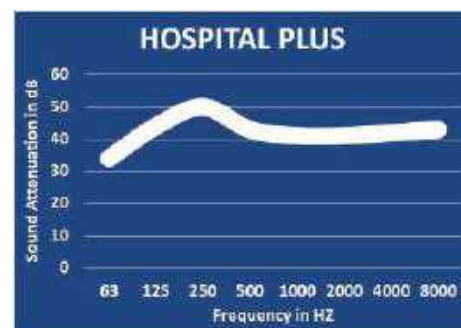
### OPTIONS

- Versatile connections including ANSI pattern flanges, NPT, slip-on, engine flange, schedule 40 and others
- Aluminized Steel, Stainless Steel 304 or 316 construction
- Two inlet configuration is available upon request

### ACCESSORIES

- Hardware Kits
- Flexible connectors and expansion joints
- Elbows
- Thimbles
- Raincaps
- Thermal insulation: integrated or with thermal insulation blankets

### TYPICAL ATTENUATION CURVE



Please see our accessories catalog for a complete listing.

Contact Nett Technologies with your projects design requirements and specifications for optimized noise control solutions.

# Super Hospital Plus Grade Silencers

## Rectangular Shape with 2" Insulation (50-60 dBA). Model NTSH2-R

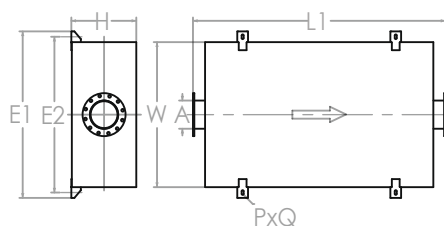
Nett Technologies' Super Hospital Plus Silencers are designed to achieve maximum performance with the least amount of backpressure.

These reactive/absorptive silencers are used for reciprocating or positive displacement engines where noise level regulations are extreme.

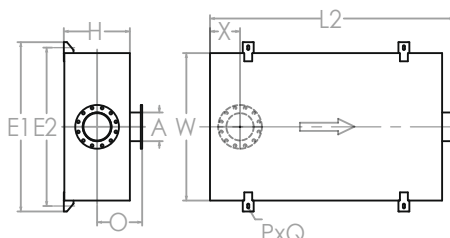
### FEATURES & BENEFITS

- Over 25 years of excellence in manufacturing noise and emission control solutions
- Compact modular designs providing ease of installations, less weight and less foot-print
- Responsive lead time for both standard and custom designs to meet your needs
- Customized engineered system solutions to meet challenging integration and engine requirements

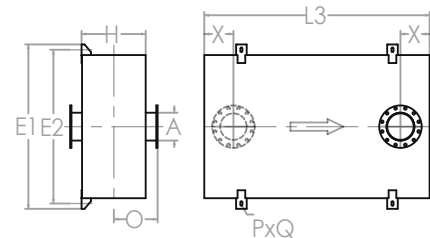
### TYPICAL CONFIGURATIONS



END IN END OUT (EI-EO)



BOTTOM IN END OUT (BI-EO)



BOTTOM IN TOP OUT (BI-TO)

### PRODUCT DIMENSIONS (in)

| Model*      | A      | W     | H      | L1    | L2    | L3    | O | X**  | X   | E1  | E2     | P        | Q      |
|-------------|--------|-------|--------|-------|-------|-------|---|------|-----|-----|--------|----------|--------|
|             | Outlet | Width | Height | EI-EO | BI-EO | BI-TO |   | Min  | Max |     |        | Slot Dia | Slot L |
| NTSH-T2-R4  | 4      | 30    | 12     | 62    | 58    | 54    | 4 | 4.5  | 26  | 37  | 33     | 0.75     | 1.75   |
| NTSH-T2-R5  | 5      | 36    | 14     | 68    | 64    | 60    | 4 | 5    | 29  | 43  | 39     | 0.75     | 1.75   |
| NTSH-T2-R6  | 6      | 48    | 14     | 80    | 76    | 72    | 4 | 5.5  | 35  | 56  | 52     | 1        | 2      |
| NTSH-T2-R8  | 8      | 60    | 16     | 94    | 90    | 86    | 4 | 6.5  | 42  | 68  | 64     | 1        | 2      |
| NTSH-T2-R10 | 10     | 68    | 18     | 104   | 100   | 96    | 4 | 7.5  | 47  | 76  | 72     | 1        | 2      |
| NTSH-T2-R12 | 12     | 72    | 22     | 108   | 104   | 100   | 4 | 8.5  | 49  | 80  | 76     | 1        | 2      |
| NTSH-T2-R14 | 14     | 72    | 26     | 112   | 108   | 104   | 4 | 9.5  | 51  | 80  | 76     | 1        | 2      |
| NTSH-T2-R16 | 16     | 80    | 28     | 120   | 116   | 112   | 4 | 10.5 | 55  | 88  | 84     | 1        | 2      |
| NTSH-T2-R18 | 18     | 92    | 30     | 128   | 124   | 120   | 4 | 11.5 | 59  | 102 | 96.75  | 1.25     | 2.25   |
| NTSH-T2-R20 | 20     | 94    | 32     | 140   | 136   | 132   | 4 | 12.5 | 65  | 104 | 98.75  | 1.25     | 2.25   |
| NTSH-T2-R22 | 22     | 96    | 34     | 144   | 140   | 136   | 4 | 13.5 | 67  | 106 | 100.75 | 1.25     | 2.25   |
| NTSH-T2-R24 | 24     | 100   | 36     | 162   | 158   | 154   | 4 | 14.5 | 76  | 110 | 104.75 | 1.25     | 2.25   |

\* This 2" internally insulated model provides a great reduction in the outer surface temperature. Other models and custom designs are available upon request. Dimensions subject to change without notice. All silencers are equipped with drain ports on inlet side. The silencer is all welded construction and coated with high heat black paint for maximum durability.

\*\* Standard inlet/outlet position.

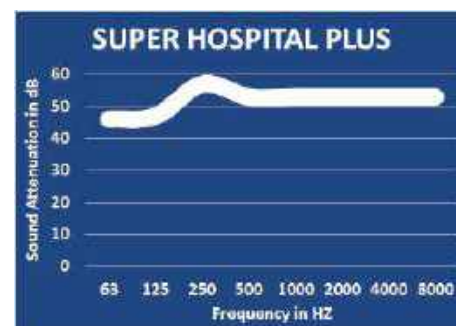
### OPTIONS

- Versatile connections including ANSI pattern flanges, NPT, slip-on, engine flange, schedule 40 and others
- Aluminized Steel, Stainless Steel 304 or 316 construction
- Two inlet configuration is available upon request

### ACCESSORIES

- Hardware Kits
- Flexible connectors and expansion joints
- Elbows
- Thimbles
- Raincaps
- Thermal insulation: integrated or with thermal insulation blankets

### TYPICAL ATTENUATION CURVE



Please see our accessories catalog for a complete listing.

Contact Nett Technologies with your projects design requirements and specifications for optimized noise control solutions.