

# Critical Grade Silencers

## Rectangular Shape (25-30 dBA). Model NTCR-R

Nett Technologies' Critical Grade Silencers are designed to achieve maximum performance with the least amount of backpressure.

These reactive silencers are used for reciprocating or positive displacement engines where noise level regulations are medium.

### FEATURES & BENEFITS

- Over 25 years of excellence in manufacturing noise and emission control solutions
- Compact modular designs providing ease of installations, less weight and less foot-print
- Responsive lead time for both standard and custom designs to meet your needs
- Customized engineered system solutions to meet challenging integration and engine requirements

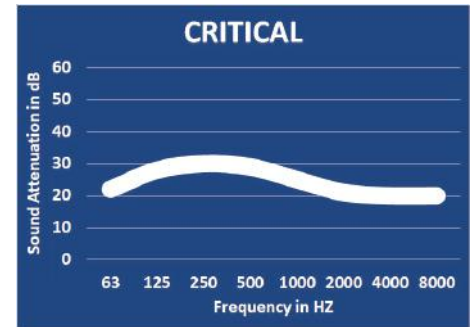
### OPTIONS

- Versatile connections including ANSI pattern flanges, NPT, slip-on, engine flange, schedule 40 and others
- Aluminized Steel, Stainless Steel 304 or 316 construction
- Two inlet configuration is available upon request

### ACCESSORIES

- Hardware Kits
- Flexible connectors and expansion joints
- Elbows
- Thimbles
- Raincaps
- Thermal insulation: integrated or with thermal insulation blankets

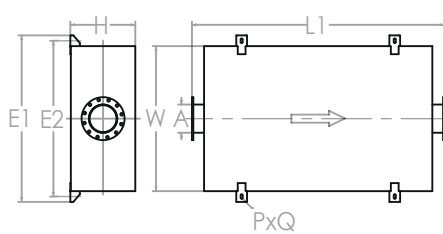
### TYPICAL ATTENUATION CURVE



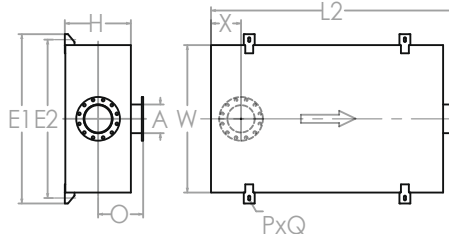
Please see our accessories catalog for a complete listing.

Contact Nett Technologies with your projects design requirements and specifications for optimized noise control solutions.

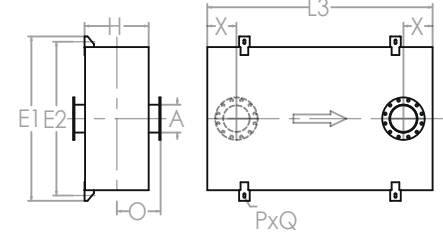
### TYPICAL CONFIGURATIONS



END IN END OUT (EI-EO)



BOTTOM IN END OUT (BI-EO)



BOTTOM IN TOP OUT (BI-TO)

### PRODUCT DIMENSIONS (in)

Model*	A	W	H	L1	L2	L3	O	X**	X	E1	E2	P	Q
	Outlet	Width	Height	EI-EO	BI-EO	BI-TO		Min	Max			Slot Dia	Slot L
NTCR-R4	4	26	8	30	26	22	8	4.5	10	33	29	0.75	1.75
NTCR-R5	5	28	10	34	30	26	9	5	12	35	31	0.75	1.75
NTCR-R6	6	34	10	36	32	28	9	5.5	13	41	37	0.75	1.75
NTCR-R8	8	42	12	48	44	40	10	6.5	19	49	45	0.75	1.75
NTCR-R10	10	48	14	56	52	48	11	7.5	23	56	52	1	2
NTCR-R12	12	56	16	68	64	60	12	8.5	29	64	60	1	2
NTCR-R14	14	62	20	74	70	66	14	9.5	32	70	66	1	2
NTCR-R16	16	70	22	80	76	72	15	10.5	35	78	74	1	2
NTCR-R18	18	74	24	84	80	76	16	11.5	37	82	78	1	2
NTCR-R20	20	88	26	92	88	84	17	12.5	41	98	92.75	1.25	2.25
NTCR-R22	22	90	28	94	90	86	18	13.5	42	100	94.75	1.25	2.25
NTCR-R24	24	92	30	96	92	88	19	14.5	43	102	96.75	1.25	2.25

\* Other models and custom designs are available upon request. Dimensions subject to change without notice. All silencers are equipped with drain ports on inlet side. The silencer is all welded construction and coated with high heat black paint for maximum durability.

\*\* Standard inlet/outlet position.