

Kohler small engine emission control just got easier!

The BlueCAT™ SSI is an advanced three-way catalyst system designed for Kohler small spark ignited (SSI) engines, providing a direct-fit replacement for OEM mufflers with no modifications required.

Developed using proven California Air Resources Board (CARB) verified technology from thousands of Large Spark Ignited (LSI) engine installations, the system has been specifically optimized for small engine applications to deliver reliable and effective emissions control.

The system is designed to operate on both gasoline and gaseous (LPG & CNG) fueled engines, offering flexibility across a wide range of equipment and operating conditions.

The catalyst is fully integrated within the muffler and engineered to match OEM size, sound attenuation, and back pressure characteristics, ensuring seamless installation while maintaining engine performance. Direct-fit designs are available for most Kohler engines, with custom configurations offered upon request.

During operation, exhaust gases pass through the catalyst where carbon monoxide (CO) and hydrocarbons (HC) are oxidized into carbon dioxide (CO₂) and water vapor (H₂O), while nitrogen oxides (NO_x) are reduced to nitrogen (N₂). When paired with an optional air/fuel (A/F) controller, the system maintains optimal air-to-fuel conditions to maximize catalyst efficiency, particularly in gaseous-fueled applications.

The BlueCAT™ SSI delivers up to 98% reduction in carbon monoxide (CO), up to 96% reduction in hydrocarbons (HC), including associated volatile organic compounds (VOCs) and hazardous air pollutants (HAPs), and up to 99% reduction in nitrogen oxides (NO_x).

Designed to improve air quality and support safer operating environments, the system is ideal for residential and commercial applications, including lawn and garden equipment, utility vehicles, generators, and a wide range of construction, agricultural, and industrial equipment.

KOHLER SMALL ENGINES



BlueCAT™ THREE-WAY CATALYST for

KOHLER

Small Spark Ignited (SSI) Engines

scan and learn



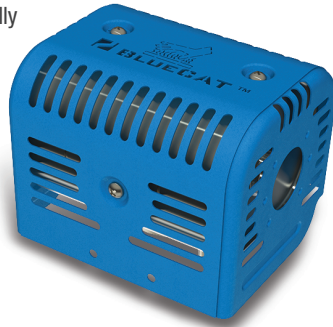
Sold and supported globally, Nett Technologies Inc., develops and manufactures proprietary catalytic solutions that use the latest in diesel oxidation catalyst (DOC), diesel particulate filter (DPF), selective catalytic reduction (SCR), engine electronics, stationary engine silencer, exhaust system and exhaust gas dilution technologies. Our reliable and real-world emission solutions will extend the usable life of existing equipment while allowing you to avoid costly future replacements. We manufacture emission control solutions that are California Air Resources Board (ARB) and the U.S. Environmental Protection Agency (EPA) verified. As the emission control authority, we are here to help you navigate through the hassles and complexities of emission control compliance.

NETT
TECHNOLOGIES INC.
...the emission control authority.

www.nettinc.com

BlueCAT™ SSI FOR KOHLER SMALL ENGINES

Affordable and easy to install the BlueCAT™ SSI is a direct-fit replacement for Kohler small engine mufflers. The emission control catalyst is built into the muffler and its size is carefully selected for its performance and ability to fit the OEM envelope of the Kohler small engine.



BlueCAT™ SSI is available for the following Kohler small engine models. Custom designs available upon request.



XT650



KT725



RH255



XT675



KT730



RH265



XT775



KT735



SH255



COMMAND PRO SERIES



KT740



SH265



KT715



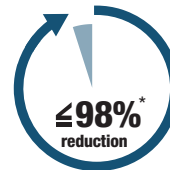
KT745

PRODUCT FEATURES

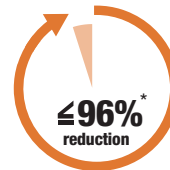
- Advanced tri-metallic catalyst technology
- Direct-fit replacement for OEM mufflers
- Designed for Kohler gasoline and LPG/CNG engines
- Optional A/F controller for optimized emissions control
- Maintains OEM sound attenuation and back pressure
- Integrated catalyst muffler design
- Durable aluminized steel construction
- Custom-fit designs available for various engine models

HEALTH AND ENVIRONMENT BENEFITS

Typical BlueCAT™ SSI Emissions Reduction Performance for Kohler Small Engines



(CO) Carbon Monoxide



(HC) Hydrocarbons



(NO_x) Nitrogen Oxides

* Emission performance is based on controlled testing, including surrogate data and triplicate ISO 8178 D2 cycles, with the engine operating under closed-loop fuel control at the proper air-to-fuel (A/F) ratio. Actual performance may vary depending on engine condition and maintenance, fuel type and quality, duty cycle, and exhaust temperature. Properly integrated and optimized systems are capable of achieving enhanced conversion efficiencies under real-world operating conditions.



...the emission control authority.

Contact Nett Technologies Inc. today at:

Phone: (905) 672-5453 Toll-Free: 1(800) 361-6388

or visit us online at www.nettinc.com

Distributed by: